

# MADISON FIRE DEPARTMENT

*2012  
ANNUAL  
REPORT*

Prepared by Steve Horton





**INDEX**

<b>Section No.</b>	<b>Description</b>
<b>1</b>	<b>Cover</b>
<b>2</b>	<b>Index</b>
<b>3</b>	<b>Indiana Arson Statute</b>
<b>4</b>	<b>Incident Reports by Incident Number - Full</b>
<b>5</b>	<b>Incidents by Type - Graph</b>
<b>6</b>	<b>Incident by Type - Summary</b>
<b>7</b>	<b>Incidents by Type - Full</b>
<b>8</b>	<b>Incidents by Date - Summary</b>
<b>9</b>	<b>Incidents by Date - Full</b>
<b>10</b>	<b>Incident Reporting by Month - Graph</b>
<b>11</b>	<b>Incident Totals by Hour - Graph</b>
<b>12</b>	<b>Incident Reports by Property Use - Summary</b>
<b>13</b>	<b>Incident Reports by Property Use - Full</b>
<b>14</b>	<b>MFD Districts - Description</b>
<b>15</b>	<b>Incident Reports by Districts - Graph</b>
<b>16</b>	<b>MFD Shifts - Description</b>
<b>17</b>	<b>Incident Reports by Shift - Summary</b>
<b>18</b>	<b>Incident Reports by Shift - Full</b>

**Cover photo - Station 6 in the quiet of the evening; awaiting the alarm.  
 (Left) Aerial Quint 6 and (Right) Rescue Engine 6  
 (MFD © photo by Steve Horton)**

**IC 35-43**

**ARTICLE 43. OFFENSES AGAINST PROPERTY**

**IC 35-43-1**

**Chapter 1. Arson, Mischief, and Tampering**

**IC 35-43-1-0.1**

**Repealed**

*(Repealed by P.L.63-2012, SEC.50.)*

**IC 35-43-1-1**

**Arson**

Sec. 1. (a) A person who, by means of fire, explosive, or destructive device, knowingly or intentionally damages:

- (1) a dwelling of another person without the other person's consent;
- (2) property of any person under circumstances that endanger human life;
- (3) property of another person without the other person's consent if the pecuniary loss is at least five thousand dollars (\$5,000); or
- (4) a structure used for religious worship without the consent of the owner of the structure;

commits arson, a Class B felony. However, the offense is a Class A felony if it results in either bodily injury or serious bodily injury to any person other than a defendant.

(b) A person who commits arson for hire commits a Class B felony. However, the offense is a Class A felony if it results in bodily injury to any other person.

(c) A person who, by means of fire, explosive, or destructive device, knowingly or intentionally damages property of any person with intent to defraud commits arson, a Class C felony.

(d) A person who, by means of fire, explosive, or destructive device, knowingly or intentionally damages property of another person without the other person's consent so that the resulting pecuniary loss is at least two hundred fifty dollars (\$250) but less than five thousand dollars (\$5,000) commits arson, a Class D felony.  
*As added by Acts 1976, P.L.148, SEC.3. Amended by Acts 1977, P.L.340, SEC.40; Acts 1980, P.L.159, SEC.4; Acts 1981, P.L.302, SEC.1; Acts 1982, P.L.204, SEC.35; P.L.88-1999, SEC.1; P.L.123-2002, SEC.36.*

## Incident Reports By Incident Number

### 2012 Incidents by Incident Number - Full (rev)

Incident #	Exp #	Date	Time	Type	
2011218	0	12/5/2011	7:00:00PM	900	Special type of incident, other
2011230	0	12/19/2011	7:00:00PM	900	Special type of incident, other
2012000	0	7/10/2012	12:00:00AM		
2012001	0	1/3/2012	12:37:00AM	730	System malfunction, other
2012002	0	1/3/2012	12:24:30PM	651	Smoke scare, odor of smoke
2012003	0	1/4/2012	6:30:00PM	740	Unintentional transmission of alarm, other
2012004	0	1/5/2012	7:00:00PM	900	Special type of incident, other
2012005	0	1/6/2012	7:00:00AM		
2012006	0	1/6/2012	6:33:00PM	651	Smoke scare, odor of smoke
2012007	0	1/8/2012	4:25:45AM	500	Service Call, other
2012008	0	1/9/2012	6:37:00AM	900	Special type of incident, other
2012009	0	1/12/2012	9:17:01AM	735	Alarm system sounded due to malfunction
2012010	0	1/9/2012	7:15:00PM	900	Special type of incident, other
2012011	0	1/10/2012	10:09:25AM	700	False alarm or false call, other
2012012	0	1/11/2012	7:31:00PM	700	False alarm or false call, other
2012013	0	1/13/2012	3:14:00AM	424	Carbon monoxide incident
2012014	0	1/15/2012	2:25:00AM	231	Chemical reaction rupture of process vessel
2012015	0	1/16/2012	6:12:00PM	352	Extrication of victim(s) from vehicle
2012016	0	1/16/2012	7:00:00PM	900	Special type of incident, other
2012017	0	1/17/2012	10:30:00AM	813	Wind storm, tornado/hurricane assessment
2012019	0	1/20/2012	8:52:01AM	745	Alarm system sounded, no fire - unintentional
2012020	0	1/21/2012	9:38:08PM	424	Carbon monoxide incident
2012021	0	1/23/2012	11:24:09AM	440	Electrical wiring/equipment problem, other
2012022	0	1/23/2012	6:30:00PM	900	Special type of incident, other
2012023	0	1/23/2012	6:30:00PM	900	Special type of incident, other
2012024	0	1/23/2012	6:00:00PM		
2012025	0	1/26/2012	6:10:16PM	611	Dispatched & canceled en route
2012026	0	1/30/2012	8:30:00AM	900	Special type of incident, other
2012027	0	2/2/2012	7:30:00PM	900	Special type of incident, other
2012028	0	2/4/2012	8:00:00AM	900	Special type of incident, other
2012029	0	2/4/2012	10:33:28AM	651	Smoke scare, odor of smoke
2012030	0	2/7/2012	6:00:00PM	900	Special type of incident, other
2012031	0	2/8/2012	2:56:47PM	611	Dispatched & canceled en route
2012032	0	2/11/2012	4:01:00PM	111	Building fire

## 2012 Incidents by Incident Number - Full (rev)

Incident #	Exp #	Date	Time	Type	
2012033	0	2/11/2012	9:12:00PM	553	Public service
2012034	0	2/12/2012	11:00:00AM	900	Special type of incident, other
2012035	0	2/13/2012	8:23:13AM	651	Smoke scare, odor of smoke
2012036	0	2/14/2012	7:20:12PM	651	Smoke scare, odor of smoke
2012037	0	2/15/2012	2:43:00AM	445	Arcing, shorted electrical equipment
2012038	0	2/15/2012	6:00:00PM	900	Special type of incident, other
2012039	0	2/16/2012	10:00:00AM	900	Special type of incident, other
2012040	0	2/18/2012	10:00:00AM	900	Special type of incident, other
2012041	0	2/18/2012	9:40:00PM	553	Public service
2012042	0	2/20/2012	9:30:00AM	553	Public service
2012043	0	2/20/2012	2:13:00PM	413	Oil or other combustible liquid spill
2012044	0	2/23/2012	6:44:00PM	900	Special type of incident, other
2012045	0	2/20/2012	8:49:38PM	651	Smoke scare, odor of smoke
2012046	0	2/22/2012	12:36:18PM	730	System malfunction, other
2012047	0	2/24/2012	11:20:25AM	611	Dispatched & canceled en route
2012048	0	2/24/2012	5:15:50PM	131	Passenger vehicle fire
2012049	0	2/25/2012	7:50:19AM	131	Passenger vehicle fire
2012050	0	2/25/2012	6:22:10PM	352	Extrication of victim(s) from vehicle
2012051	0	2/26/2012	11:15:15AM	411	Gasoline or other flammable liquid spill
2012052	0	2/27/2012	6:30:00PM	900	Special type of incident, other
2012053	0	2/28/2012	9:42:15PM	353	Removal of victim(s) from stalled elevator
2012054	0	2/29/2012	8:14:00AM	815	Severe weather or natural disaster standby
2012055	0	3/2/2012	11:26:24AM	736	CO detector activation due to malfunction
2012056	0	3/2/2012	12:00:00PM	815	Severe weather or natural disaster standby
2012057	0	3/2/2012	3:08:58PM	900	Special type of incident, other
2012058	0	3/2/2012	3:41:28PM	813	Wind storm, tornado/hurricane assessment
2012059	0	3/5/2012	7:15:00PM	900	Special type of incident, other
2012060	0	3/6/2012	7:50:25PM	611	Dispatched & canceled en route
2012061	0	3/7/2012	7:00:13AM	900	Special type of incident, other
2012062	0	3/9/2012	2:00:00PM	900	Special type of incident, other
2012063	0	3/10/2012	2:20:15PM	671	Hazmat release investigation w/ no hazmat
2012064	0	3/10/2012	7:04:24PM	352	Extrication of victim(s) from vehicle
2012065	0	3/13/2012	4:32:10PM	424	Carbon monoxide incident
2012066	0	3/14/2012	8:59:38PM	740	Unintentional transmission of alarm, other
2012067	0	3/18/2012	1:40:43PM	733	Smoke detector activation due to malfunction
2012068	0	3/19/2012	1:21:08PM	142	Brush, or brush and grass mixture fire
2012069	0	3/20/2012	4:30:00PM	900	Special type of incident, other
2012070	0	3/22/2012	10:31:52AM	413	Oil or other combustible liquid spill

## 2012 Incidents by Incident Number - Full (rev)

Incident #	Exp #	Date	Time	Type	
2012071	0	3/25/2012	2:29:57PM	651	Smoke scare, odor of smoke
2012072	0	3/26/2012	7:00:00PM	900	Special type of incident, other
2012073	0	3/29/2012	10:19:00PM	161	Outside storage fire
2012074	0	3/30/2012	3:45:03PM	731	Sprinkler activation due to malfunction
2012075	0	3/30/2012	8:56:55PM	151	Outside rubbish, trash or waste fire
2012076	0	3/31/2012	11:58:00AM	900	Special type of incident, other
2012077	0	4/5/2012	7:25:00PM	900	Special type of incident, other
2012078	0	4/6/2012	7:30:00AM	900	Special type of incident, other
2012079	0	4/8/2012	2:17:45PM	112	Fires in structures other than in a building
2012080	0	4/8/2012	4:57:40PM	111	Building fire
2012081	0	4/9/2012	1:29:30PM	143	Grass fire
2012082	0	4/9/2012	8:05:51PM	321	EMS call, excluding vehicle accident with injury
2012083	0	4/10/2012	12:50:03AM	352	Extrication of victim(s) from vehicle
2012084	0	4/10/2012	9:36:25AM	652	Steam, vapor, fog or dust thought to be smoke
2012085	0	4/11/2012	1:16:55PM	100	Fire, other
2012085	1	4/11/2012	1:16:55PM	111	Building fire
2012086	0	4/13/2012	12:44:26PM	131	Passenger vehicle fire
2012086	1	4/13/2012	12:44:26PM	131	Passenger vehicle fire
2012086	2	4/13/2012	12:44:26PM	131	Passenger vehicle fire
2012087	0	4/15/2012	9:00:00AM	900	Special type of incident, other
2012088	0	4/17/2012	11:11:13PM	561	Unauthorized burning
2012089	0	4/18/2012	6:00:00PM	900	Special type of incident, other
2012090	0	4/18/2012	8:20:41PM	600	Good intent call, other
2012091	0	4/19/2012	11:00:00AM	900	Special type of incident, other
2012092	0	4/25/2012	3:10:00PM	561	Unauthorized burning
2012093	0	4/20/2012	6:30:12PM	561	Unauthorized burning
2012094	0	4/21/2012	7:17:47PM	356	High angle rescue
2012095	0	4/23/2012	7:32:14AM	651	Smoke scare, odor of smoke
2012096	0	4/23/2012	11:51:47AM	671	Hazmat release investigation w/ no hazmat
2012097	0	4/23/2012	1:42:21PM	671	Hazmat release investigation w/ no hazmat
2012098	0	4/23/2012	6:00:00PM	900	Special type of incident, other
2012099	0	4/23/2012	7:58:00PM	900	Special type of incident, other
2012100	0	4/24/2012	8:30:00AM	900	Special type of incident, other
2012101	0	4/24/2012	7:00:00PM	900	Special type of incident, other
2012102	0	4/26/2012	6:00:00PM	900	Special type of incident, other
2012103	0	4/27/2012	5:34:56PM	111	Building fire
2012103	1	4/27/2012	5:34:56PM	111	Building fire
2012103	2	4/27/2012	5:34:56PM	111	Building fire

## 2012 Incidents by Incident Number - Full (rev)

Incident #	Exp #	Date	Time	Type	
2012104	0	4/28/2012	5:54:26AM	111	Building fire
2012106	0	4/30/2012	12:36:30AM	111	Building fire
2012107	0	5/1/2012	6:00:00PM	900	Special type of incident, other
2012108	0	5/2/2012	7:36:15AM	353	Removal of victim(s) from stalled elevator
2012109	0	5/3/2012	9:03:00AM	554	Assist invalid
2012110	0	5/4/2012	11:07:00PM	111	Building fire
2012111	0	5/5/2012	8:00:00AM	900	Special type of incident, other
2012112	0	5/5/2012	3:10:03PM	100	Fire, other
2012113	0	5/7/2012	1:13:30PM	445	Arcing, shorted electrical equipment
2012114	0	5/10/2012	1:12:00AM	112	Fires in structures other than in a building
2012115	0	5/10/2012	5:00:00PM	900	Special type of incident, other
2012116	0	5/15/2012	2:12:00PM	551	Assist police or other governmental agency
2012117	0	5/16/2012	6:00:00PM	900	Special type of incident, other
2012118	0	5/17/2012	9:00:00PM	561	Unauthorized burning
2012119	0	5/19/2012	7:45:00AM	900	Special type of incident, other
2012120	0	5/19/2012	3:57:30PM	160	Special outside fire, other
2012121	0	5/19/2012	8:40:50PM	131	Passenger vehicle fire
2012122	0	5/19/2012	9:09:29PM	631	Authorized controlled burning
2012123	0	5/22/2012	7:08:09PM	311	Medical assist, assist EMS crew
2012124	0	5/26/2012	4:00:00AM	132	Road freight or transport vehicle fire
2012125	0	5/26/2012	11:00:00AM	553	Public service
2012126	0	5/28/2012	1:00:00PM	900	Special type of incident, other
2012127	0	5/28/2012	6:00:00PM	900	Special type of incident, other
2012128	0	5/31/2012	10:45:14AM	611	Dispatched & canceled en route
2012129	0	6/2/2012	9:00:00AM	900	Special type of incident, other
2012130	0	6/3/2012	6:24:31PM	700	False alarm or false call, other
2012131	0	6/6/2012	5:05:00AM	600	Good intent call, other
2012132	0	6/6/2012	6:00:00PM	900	Special type of incident, other
2012133	0	6/8/2012	10:36:17AM	445	Arcing, shorted electrical equipment
2012135	0	6/9/2012	5:18:00PM	900	Special type of incident, other
2012136	0	6/10/2012	7:57:23AM	651	Smoke scare, odor of smoke
2012137	0	6/13/2012	9:32:45AM	741	Sprinkler activation, no fire - unintentional
2012138	0	6/18/2012	6:20:20AM	671	Hazmat release investigation w/ no hazmat
2012139	0	6/18/2012	8:00:00AM	900	Special type of incident, other
2012140	0	6/18/2012	7:28:00PM	900	Special type of incident, other
2012141	0	6/19/2012	1:25:58PM	162	Outside equipment fire
2012142	0	6/19/2012	4:57:58PM	651	Smoke scare, odor of smoke
2012143	0	6/21/2012	9:45:54AM	745	Alarm system sounded, no fire - unintentional



## 2012 Incidents by Incident Number - Full (rev)

Incident #	Exp #	Date	Time	Type	
2012144	0	6/21/2012	5:53:00PM	900	Special type of incident, other
2012145	0	6/22/2012	6:42:56PM	311	Medical assist, assist EMS crew
2012146	0	6/22/2012	6:53:18PM	131	Passenger vehicle fire
2012147	0	6/23/2012	9:52:00AM	150	Outside rubbish fire, other
2012149	0	6/24/2012	11:10:35PM	154	Dumpster or other outside trash receptacle fire
2012150	0	6/24/2012	11:30:25PM	154	Dumpster or other outside trash receptacle fire
2012151	0	6/25/2012	6:30:00PM	900	Special type of incident, other
2012152	0	6/26/2012	1:48:37AM	611	Dispatched & canceled en route
2012153	0	6/27/2012	8:02:23AM	170	Cultivated vegetation, crop fire, other
2012154	0	6/27/2012	6:00:00PM	900	Special type of incident, other
2012155	0	6/28/2012	9:00:00AM	900	Special type of incident, other
2012156	0	6/29/2012	5:25:01PM	445	Arcing, shorted electrical equipment
2012157	0	6/29/2012	5:42:00PM	444	Power line down
2012158	0	6/29/2012	5:43:00PM	445	Arcing, shorted electrical equipment
2012159	0	6/29/2012	6:45:35PM	740	Unintentional transmission of alarm, other
2012160	0	6/29/2012	7:21:00PM	500	Service Call, other
2012161	0	6/30/2012	11:45:50PM	651	Smoke scare, odor of smoke
2012162	0	7/1/2012	3:34:00AM	445	Arcing, shorted electrical equipment
2012163	0	7/1/2012	12:58:20PM	111	Building fire
2012164	0	7/1/2012	6:49:23PM	445	Arcing, shorted electrical equipment
2012165	0	7/1/2012	6:49:23PM	445	Arcing, shorted electrical equipment
2012166	0	7/1/2012	7:01:00PM	445	Arcing, shorted electrical equipment
2012167	0	7/2/2012	7:35:21AM	131	Passenger vehicle fire
2012167	1	7/2/2012	7:35:21AM	111	Building fire
2012168	0	7/2/2012	10:52:51AM	444	Power line down
2012169	0	7/2/2012	1:06:39PM	445	Arcing, shorted electrical equipment
2012170	0	7/2/2012	1:40:00PM	911	Citizen complaint
2012171	0	7/2/2012	7:30:00PM	900	Special type of incident, other
2012172	0	7/4/2012	5:30:00PM	553	Public service
2012173	0	7/5/2012	5:03:20PM	445	Arcing, shorted electrical equipment
2012174	0	7/6/2012	6:09:12AM	733	Smoke detector activation due to malfunction
2012175	0	7/6/2012	6:00:00PM	553	Public service
2012176	0	7/11/2012	7:09:01PM	111	Building fire
2012177	0	7/11/2012	9:30:00PM	561	Unauthorized burning
2012178	0	7/15/2012	10:46:00AM		
2012179	0	7/16/2012	12:56:11PM	411	Gasoline or other flammable liquid spill
2012180	0	7/18/2012	6:00:00PM	900	Special type of incident, other
2012181	0	7/20/2012	12:36:18PM	744	Detector activation, no fire - unintentional

## 2012 Incidents by Incident Number - Full (rev)

Incident #	Exp #	Date	Time	Type	
2012182	0	7/21/2012	8:30:00AM	900	Special type of incident, other
2012183	0	7/24/2012	6:30:00AM	900	Special type of incident, other
2012184	0	7/24/2012	6:00:00PM	900	Special type of incident, other
2012185	0	7/27/2012	7:52:30PM	445	Arcing, shorted electrical equipment
2012186	0	7/28/2012	12:02:02AM	745	Alarm system sounded, no fire - unintentional
2012187	0	7/28/2012	9:00:00AM	900	Special type of incident, other
2012188	0	7/28/2012	12:00:00PM		
2012189	0	7/30/2012	5:45:00PM	900	Special type of incident, other
2012190	0	7/31/2012	8:01:00PM	151	Outside rubbish, trash or waste fire
2012191	0	8/1/2012	12:31:00PM	611	Dispatched & canceled en route
2012192	0	8/6/2012	2:48:55PM	611	Dispatched & canceled en route
2012193	0	8/8/2012	2:08:20AM	744	Detector activation, no fire - unintentional
2012194	0	8/8/2012	1:14:12PM	131	Passenger vehicle fire
2012195	0	8/8/2012	1:43:21PM	142	Brush, or brush and grass mixture fire
2012196	0	8/10/2012	5:00:00PM	553	Public service
2012197	0	8/11/2012	12:30:00PM	553	Public service
2012198	0	8/11/2012	1:48:32PM	730	System malfunction, other
2012199	0	8/12/2012	4:27:27PM	143	Grass fire
2012200	0	8/12/2012	5:00:00PM	553	Public service
2012201	0	8/15/2012	12:02:06PM	111	Building fire
2012202	0	8/15/2012	6:00:00PM	900	Special type of incident, other
2012203	0	8/16/2012	9:48:00AM	744	Detector activation, no fire - unintentional
2012204	0	8/17/2012	12:05:30AM	611	Dispatched & canceled en route
2012205	0	8/20/2012	7:00:00PM	900	Special type of incident, other
2012206	0	8/22/2012	6:00:00PM	900	Special type of incident, other
2012207	0	8/25/2012	8:00:00AM	900	Special type of incident, other
2012208	0	8/26/2012	10:33:30AM	131	Passenger vehicle fire
2012209	0	8/27/2012	7:30:00PM	900	Special type of incident, other
2012210	0	9/1/2012	8:30:00AM	900	Special type of incident, other
2012211	0	9/1/2012	10:07:50PM	154	Dumpster or other outside trash receptacle fire
2012212	0	9/5/2012	10:13:00AM	561	Unauthorized burning
2012213	0	9/6/2012	12:27:45PM	412	Gas leak (natural gas or LPG)
2012214	0	9/7/2012	4:41:00PM	352	Extrication of victim(s) from vehicle
2012215	0	9/8/2012	12:50:19PM	611	Dispatched & canceled en route
2012216	0	9/10/2012	6:00:00PM	900	Special type of incident, other
2012217	0	9/10/2012	7:04:00PM	900	Special type of incident, other
2012218	0	9/16/2012	12:00:00AM	900	Special type of incident, other
2012219	0	9/17/2012	6:00:00PM	900	Special type of incident, other

## 2012 Incidents by Incident Number - Full (rev)

Incident #	Exp #	Date	Time	Type	
2012220	0	9/19/2012	6:00:00PM	900	Special type of incident, other
2012221	0	9/22/2012	7:00:00AM	900	Special type of incident, other
2012222	0	9/24/2012	6:00:00PM	900	Special type of incident, other
2012223	0	9/24/2012	6:00:00PM	900	Special type of incident, other
2012224	0	9/26/2012	1:45:12PM	611	Dispatched & canceled en route
2012225	0	9/26/2012	6:11:00PM	412	Gas leak (natural gas or LPG)
2012226	0	9/27/2012	2:03:00AM	741	Sprinkler activation, no fire - unintentional
2012227	0	9/28/2012	7:06:03PM	733	Smoke detector activation due to malfunction
2012228	0	9/29/2012	6:13:48AM	352	Extrication of victim(s) from vehicle
2012229	0	9/29/2012	9:14:16AM	733	Smoke detector activation due to malfunction
2012230	0	9/29/2012	11:00:00AM	553	Public service
2012231	0	9/29/2012	8:53:26PM	744	Detector activation, no fire - unintentional
2012232	0	9/30/2012	1:30:20PM	113	Cooking fire, confined to container
2012233	0	10/1/2012	4:07:00PM	352	Extrication of victim(s) from vehicle
2012234	0	10/2/2012	11:00:00AM	911	Citizen complaint
2012235	0	10/2/2012	5:00:39PM	744	Detector activation, no fire - unintentional
2012236	0	10/3/2012	5:39:00AM	352	Extrication of victim(s) from vehicle
2012237	0	10/6/2012	10:41:15AM	553	Public service
2012238	0	10/8/2012	9:26:48AM	352	Extrication of victim(s) from vehicle
2012239	0	10/11/2012	2:52:00AM	651	Smoke scare, odor of smoke
2012242	0	10/13/2012	4:47:48PM	730	System malfunction, other
2012244	0	10/15/2012	9:04:20AM	621	Wrong location
2012245	0	10/15/2012	9:04:20AM	412	Gas leak (natural gas or LPG)
2012247	0	10/16/2012	5:30:00PM	900	Special type of incident, other
2012248	0	10/17/2012	10:54:00PM	600	Good intent call, other
2012249	0	10/19/2012	10:55:25AM	424	Carbon monoxide incident
2012250	0	10/20/2012	7:00:00AM	900	Special type of incident, other
2012251	0	10/22/2012	6:20:00PM	445	Arcing, shorted electrical equipment
2012254	0	10/23/2012	8:07:58PM	561	Unauthorized burning
2012255	0	10/24/2012	2:09:00PM	740	Unintentional transmission of alarm, other
2012257	0	10/25/2012	8:07:45AM	600	Good intent call, other
2012258	0	10/26/2012	9:00:00AM	900	Special type of incident, other
2012259	0	10/29/2012	12:11:22AM	132	Road freight or transport vehicle fire
2012260	0	11/1/2012	8:42:29AM	140	Natural vegetation fire, other
2012261	0	11/3/2012	2:58:00AM	100	Fire, other
2012262	0	11/5/2012	7:37:45AM	611	Dispatched & canceled en route
2012263	0	11/7/2012	2:26:00PM	412	Gas leak (natural gas or LPG)
2012264	0	11/9/2012	4:56:32PM	671	Hazmat release investigation w/ no hazmat

## 2012 Incidents by Incident Number - Full (rev)

Incident #	Exp #	Date	Time	Type	
2012265	0	11/9/2012	5:09:45PM	651	Smoke scare, odor of smoke
2012266	0	11/10/2012	10:57:12AM	651	Smoke scare, odor of smoke
2012267	0	11/10/2012	11:02:15AM	353	Removal of victim(s) from stalled elevator
2012268	0	11/13/2012	7:47:30AM	445	Arcing, shorted electrical equipment
2012269	0	11/13/2012	2:12:35PM	900	Special type of incident, other
2012270	0	11/15/2012	9:00:00AM	900	Special type of incident, other
2012271	0	11/15/2012	10:30:00AM	553	Public service
2012272	0	11/16/2012	12:49:00PM	445	Arcing, shorted electrical equipment
2012273	0	11/12/2012	12:00:00AM	900	Special type of incident, other
2012274	0	11/12/2012	7:00:00PM	900	Special type of incident, other
2012275	0	11/18/2012	8:45:58AM	611	Dispatched & canceled en route
2012276	0	11/28/2012	1:34:00PM	131	Passenger vehicle fire
2012277	0	11/19/2012	7:30:00PM	900	Special type of incident, other
2012278	0	11/19/2012	7:45:00PM	900	Special type of incident, other
2012279	0	11/22/2012	11:40:34AM	651	Smoke scare, odor of smoke
2012280	0	11/24/2012	11:30:00AM	900	Special type of incident, other
2012281	0	11/25/2012	5:44:37PM	611	Dispatched & canceled en route
2012282	0	11/26/2012	6:45:00PM	900	Special type of incident, other
2012283	0	11/26/2012	7:00:00PM	900	Special type of incident, other
2012284	0	11/26/2012	11:13:29PM	142	Brush, or brush and grass mixture fire
2012285	0	11/27/2012	9:58:00PM	132	Road freight or transport vehicle fire
2012287	0	11/28/2012	5:37:50PM	113	Cooking fire, confined to container
2012289	0	11/29/2012	1:18:18PM	142	Brush, or brush and grass mixture fire
2012290	0	11/29/2012	10:17:00PM	445	Arcing, shorted electrical equipment
2012291	0	11/30/2012	1:33:48PM	611	Dispatched & canceled en route
2012292	0	12/1/2012	6:31:00AM	900	Special type of incident, other
2012293	0	12/1/2012	10:16:00AM	100	Fire, other
2012294	0	12/1/2012	9:50:13PM	111	Building fire
2012295	0	12/2/2012	10:58:47AM	745	Alarm system sounded, no fire - unintentional
2012296	0	12/2/2012	3:30:00PM	900	Special type of incident, other
2012297	0	12/3/2012	7:43:58AM	744	Detector activation, no fire - unintentional
2012298	0	12/6/2012	7:00:00PM	900	Special type of incident, other
2012299	0	12/8/2012	8:00:00AM	900	Special type of incident, other
2012300	0	12/9/2012	12:00:00PM	900	Special type of incident, other
2012301	0	12/10/2012	12:57:59PM	743	Smoke detector activation, no fire - unintentional
2012302	0	12/15/2012	12:00:00PM	900	Special type of incident, other
2012303	0	12/16/2012	12:00:00PM	900	Special type of incident, other
2012304	0	12/16/2012	3:30:00PM	900	Special type of incident, other

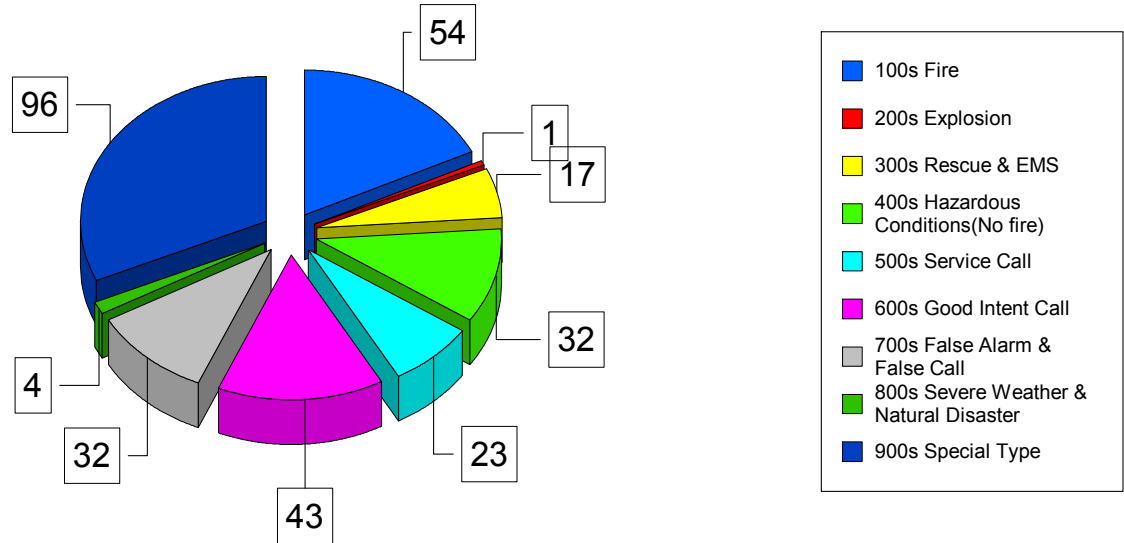
## 2012 Incidents by Incident Number - Full (rev)

Incident #	Exp #	Date	Time	Type	
2012305	0	12/16/2012	8:00:00AM	900	Special type of incident, other
2012306	0	12/17/2012	8:30:00AM	900	Special type of incident, other
2012307	0	12/18/2012	12:11:30AM	352	Extrication of victim(s) from vehicle
2012308	0	12/21/2012	1:09:00AM	111	Building fire
2012309	0	12/22/2012	10:01:30PM	410	Flammable gas or liquid condition, other
2012310	0	12/24/2012	7:24:50AM	652	Steam, vapor, fog or dust thought to be smoke
2012311	0	12/30/2012	6:25:45AM	700	False alarm or false call, other

Print Date: 2/14/2013

Grand Total: 307

2012 Incidents by Type - Graph (rev)



Graphed Items are sorted by Incident Type

Type Of Incident:	Total Of Incidents:	Percentage Value:
100 Series-Fire	54	17.88%
200 Series-Explosion	1	0.33%
300 Series-Rescue & EMS	17	5.63%
400 Series-Hazardous Conditions(No fire)	32	10.60%
500 Series-Service Call	23	7.62%
600 Series-Good Intent Call	43	14.24%
700 Series-False Alarm & False Call	32	10.60%
800 Series-Severe Weather & Natural Disaster	4	1.32%
900 Series-Special Type	96	31.79%

Grand Total: 302

Type Of Incident Most Frequent: 900 Series-Special Type

2012 Incidents by Type of Situation Found - Summary (rev)

Incident Type	Total Incidents:
	5
100 Fire, other	4
111 Building fire	15
112 Fires in structures other than in a building	2
113 Cooking fire, confined to container	2
131 Passenger vehicle fire	11
132 Road freight or transport vehicle fire	3
140 Natural vegetation fire, other	1
142 Brush, or brush and grass mixture fire	4
143 Grass fire	2
150 Outside rubbish fire, other	1
151 Outside rubbish, trash or waste fire	2
154 Dumpster or other outside trash receptacle fire	3
160 Special outside fire, other	1
161 Outside storage fire	1
162 Outside equipment fire	1
170 Cultivated vegetation, crop fire, other	1
231 Chemical reaction rupture of process vessel	1
311 Medical assist, assist EMS crew	2
321 EMS call, excluding vehicle accident with injury	1
352 Extrication of victim(s) from vehicle	10
353 Removal of victim(s) from stalled elevator	3
356 High angle rescue	1
410 Flammable gas or liquid condition, other	1
411 Gasoline or other flammable liquid spill	2
412 Gas leak (natural gas or LPG)	4
413 Oil or other combustible liquid spill	2
424 Carbon monoxide incident	4
440 Electrical wiring/equipment problem, other	1
444 Power line down	2
445 Arcing, shorted electrical equipment	16
500 Service Call, other	2
551 Assist police or other governmental agency	1
553 Public service	12
554 Assist invalid	1
561 Unauthorized burning	7
600 Good intent call, other	4
611 Dispatched & canceled en route	15
621 Wrong location	1
631 Authorized controlled burning	1
651 Smoke scare, odor of smoke	15
652 Steam, vapor, fog or dust thought to be smoke	2
671 Hazmat release investigation w/ no hazmat	5
700 False alarm or false call, other	4
730 System malfunction, other	4

## 2012 Incidents by Type of Situation Found - Summary (rev)

Incident Type	Total Incidents:
731 Sprinkler activation due to malfunction	1
733 Smoke detector activation due to malfunction	4
735 Alarm system sounded due to malfunction	1
736 CO detector activation due to malfunction	1
740 Unintentional transmission of alarm, other	4
741 Sprinkler activation, no fire - unintentional	2
743 Smoke detector activation, no fire - unintentional	1
744 Detector activation, no fire - unintentional	6
745 Alarm system sounded, no fire - unintentional	4
813 Wind storm, tornado/hurricane assessment	2
815 Severe weather or natural disaster standby	2
900 Special type of incident, other	94
911 Citizen complaint	2
<b>Total Number of Incidents:</b>	<b>307</b>
<b>Total Number of Incident Types:</b>	<b>58</b>

Print Date: 2/14/2013



**2012 Incidents by Type of Situation Found - Full (rev)**

**Incident Type:**

Incident #	Exp #	Date	Time
2012000	0	7/10/2012	12:00:00AM
2012005	0	1/6/2012	7:00:00AM
2012024	0	1/23/2012	6:00:00PM
2012178	0	7/15/2012	10:46:00AM
2012188	0	7/28/2012	12:00:00PM
			<b>Total Incidents: 5</b>

**Incident Type: 100 Fire, other**

Incident #	Exp #	Date	Time
2012085	0	4/11/2012	1:16:55PM
2012112	0	5/5/2012	3:10:03PM
2012261	0	11/3/2012	2:58:00AM
2012293	0	12/1/2012	10:16:00AM
			<b>Total Incidents: 4</b>

**Incident Type: 111 Building fire**

Incident #	Exp #	Date	Time
2012032	0	2/11/2012	4:01:00PM
2012080	0	4/8/2012	4:57:40PM
2012085	1	4/11/2012	1:16:55PM
2012103	0	4/27/2012	5:34:56PM
2012103	1	4/27/2012	5:34:56PM
2012103	2	4/27/2012	5:34:56PM
2012104	0	4/28/2012	5:54:26AM
2012106	0	4/30/2012	12:36:30AM
2012110	0	5/4/2012	11:07:00PM
2012163	0	7/1/2012	12:58:20PM
2012167	1	7/2/2012	7:35:21AM
2012176	0	7/11/2012	7:09:01PM
2012201	0	8/15/2012	12:02:06PM
2012294	0	12/1/2012	9:50:13PM
2012308	0	12/21/2012	1:09:00AM
			<b>Total Incidents: 15</b>

## 2012 Incidents by Type of Situation Found - Full (rev)

**Incident Type: 112 Fires in structures other than in a building**

Incident #	Exp #	Date	Time
2012079	0	4/8/2012	2:17:45PM
2012114	0	5/10/2012	1:12:00AM

Total Incidents: 2

**Incident Type: 113 Cooking fire, confined to container**

Incident #	Exp #	Date	Time
2012232	0	9/30/2012	1:30:20PM
2012287	0	11/28/2012	5:37:50PM

Total Incidents: 2

**Incident Type: 131 Passenger vehicle fire**

Incident #	Exp #	Date	Time
2012048	0	2/24/2012	5:15:50PM
2012049	0	2/25/2012	7:50:19AM
2012086	0	4/13/2012	12:44:26PM
2012086	1	4/13/2012	12:44:26PM
2012086	2	4/13/2012	12:44:26PM
2012121	0	5/19/2012	8:40:50PM
2012146	0	6/22/2012	6:53:18PM
2012167	0	7/2/2012	7:35:21AM
2012194	0	8/8/2012	1:14:12PM
2012208	0	8/26/2012	10:33:30AM
2012276	0	11/28/2012	1:34:00PM

Total Incidents: 11

**Incident Type: 132 Road freight or transport vehicle fire**

Incident #	Exp #	Date	Time
2012124	0	5/26/2012	4:00:00AM
2012259	0	10/29/2012	12:11:22AM
2012285	0	11/27/2012	9:58:00PM

Total Incidents: 3

**Incident Type: 140 Natural vegetation fire, other**

Incident #	Exp #	Date	Time
2012260	0	11/1/2012	8:42:29AM

Total Incidents: 1

## 2012 Incidents by Type of Situation Found - Full (rev)

**Incident Type: 142 Brush, or brush and grass mixture fire**

Incident #	Exp #	Date	Time
2012068	0	3/19/2012	1:21:08PM
2012195	0	8/8/2012	1:43:21PM
2012284	0	11/26/2012	11:13:29PM
2012289	0	11/29/2012	1:18:18PM

Total Incidents: 4

**Incident Type: 143 Grass fire**

Incident #	Exp #	Date	Time
2012081	0	4/9/2012	1:29:30PM
2012199	0	8/12/2012	4:27:27PM

Total Incidents: 2

**Incident Type: 150 Outside rubbish fire, other**

Incident #	Exp #	Date	Time
2012147	0	6/23/2012	9:52:00AM

Total Incidents: 1

**Incident Type: 151 Outside rubbish, trash or waste fire**

Incident #	Exp #	Date	Time
2012075	0	3/30/2012	8:56:55PM
2012190	0	7/31/2012	8:01:00PM

Total Incidents: 2

**Incident Type: 154 Dumpster or other outside trash receptacle fire**

Incident #	Exp #	Date	Time
2012149	0	6/24/2012	11:10:35PM
2012150	0	6/24/2012	11:30:25PM
2012211	0	9/1/2012	10:07:50PM

Total Incidents: 3

**Incident Type: 160 Special outside fire, other**

Incident #	Exp #	Date	Time
2012120	0	5/19/2012	3:57:30PM

Total Incidents: 1

**Incident Type: 161 Outside storage fire**

Incident #	Exp #	Date	Time
2012073	0	3/29/2012	10:19:00PM

Total Incidents: 1

## 2012 Incidents by Type of Situation Found - Full (rev)

**Incident Type: 162 Outside equipment fire**

Incident #	Exp #	Date	Time
2012141	0	6/19/2012	1:25:58PM

Total Incidents: 1

**Incident Type: 170 Cultivated vegetation, crop fire, other**

Incident #	Exp #	Date	Time
2012153	0	6/27/2012	8:02:23AM

Total Incidents: 1

**Incident Type: 231 Chemical reaction rupture of process vessel**

Incident #	Exp #	Date	Time
2012014	0	1/15/2012	2:25:00AM

Total Incidents: 1

**Incident Type: 311 Medical assist, assist EMS crew**

Incident #	Exp #	Date	Time
2012123	0	5/22/2012	7:08:09PM
2012145	0	6/22/2012	6:42:56PM

Total Incidents: 2

**Incident Type: 321 EMS call, excluding vehicle accident with injury**

Incident #	Exp #	Date	Time
2012082	0	4/9/2012	8:05:51PM

Total Incidents: 1

**Incident Type: 352 Extrication of victim(s) from vehicle**

Incident #	Exp #	Date	Time
2012015	0	1/16/2012	6:12:00PM
2012050	0	2/25/2012	6:22:10PM
2012064	0	3/10/2012	7:04:24PM
2012083	0	4/10/2012	12:50:03AM
2012214	0	9/7/2012	4:41:00PM
2012228	0	9/29/2012	6:13:48AM
2012233	0	10/1/2012	4:07:00PM
2012236	0	10/3/2012	5:39:00AM
2012238	0	10/8/2012	9:26:48AM
2012307	0	12/18/2012	12:11:30AM

Total Incidents: 10

## 2012 Incidents by Type of Situation Found - Full (rev)

**Incident Type: 353 Removal of victim(s) from stalled elevator**

Incident #	Exp #	Date	Time
2012053	0	2/28/2012	9:42:15PM
2012108	0	5/2/2012	7:36:15AM
2012267	0	11/10/2012	11:02:15AM

Total Incidents: 3

**Incident Type: 356 High angle rescue**

Incident #	Exp #	Date	Time
2012094	0	4/21/2012	7:17:47PM

Total Incidents: 1

**Incident Type: 410 Flammable gas or liquid condition, other**

Incident #	Exp #	Date	Time
2012309	0	12/22/2012	10:01:30PM

Total Incidents: 1

**Incident Type: 411 Gasoline or other flammable liquid spill**

Incident #	Exp #	Date	Time
2012051	0	2/26/2012	11:15:15AM
2012179	0	7/16/2012	12:56:11PM

Total Incidents: 2

**Incident Type: 412 Gas leak (natural gas or LPG)**

Incident #	Exp #	Date	Time
2012213	0	9/6/2012	12:27:45PM
2012225	0	9/26/2012	6:11:00PM
2012245	0	10/15/2012	9:04:20AM
2012263	0	11/7/2012	2:26:00PM

Total Incidents: 4

**Incident Type: 413 Oil or other combustible liquid spill**

Incident #	Exp #	Date	Time
2012043	0	2/20/2012	2:13:00PM
2012070	0	3/22/2012	10:31:52AM

Total Incidents: 2

## 2012 Incidents by Type of Situation Found - Full (rev)

**Incident Type: 424 Carbon monoxide incident**

Incident #	Exp #	Date	Time
2012013	0	1/13/2012	3:14:00AM
2012020	0	1/21/2012	9:38:08PM
2012065	0	3/13/2012	4:32:10PM
2012249	0	10/19/2012	10:55:25AM

Total Incidents: 4

**Incident Type: 440 Electrical wiring/equipment problem, other**

Incident #	Exp #	Date	Time
2012021	0	1/23/2012	11:24:09AM

Total Incidents: 1

**Incident Type: 444 Power line down**

Incident #	Exp #	Date	Time
2012157	0	6/29/2012	5:42:00PM
2012168	0	7/2/2012	10:52:51AM

Total Incidents: 2

**Incident Type: 445 Arcing, shorted electrical equipment**

Incident #	Exp #	Date	Time
2012037	0	2/15/2012	2:43:00AM
2012113	0	5/7/2012	1:13:30PM
2012133	0	6/8/2012	10:36:17AM
2012156	0	6/29/2012	5:25:01PM
2012158	0	6/29/2012	5:43:00PM
2012162	0	7/1/2012	3:34:00AM
2012164	0	7/1/2012	6:49:23PM
2012165	0	7/1/2012	6:49:23PM
2012166	0	7/1/2012	7:01:00PM
2012169	0	7/2/2012	1:06:39PM
2012173	0	7/5/2012	5:03:20PM
2012185	0	7/27/2012	7:52:30PM
2012251	0	10/22/2012	6:20:00PM
2012268	0	11/13/2012	7:47:30AM
2012272	0	11/16/2012	12:49:00PM
2012290	0	11/29/2012	10:17:00PM

Total Incidents: 16

**Incident Type: 500 Service Call, other**

Incident #	Exp #	Date	Time
2012007	0	1/8/2012	4:25:45AM
2012160	0	6/29/2012	7:21:00PM

Total Incidents: 2

## 2012 Incidents by Type of Situation Found - Full (rev)

**Incident Type: 551 Assist police or other governmental agency**

Incident #	Exp #	Date	Time
2012116	0	5/15/2012	2:12:00PM

Total Incidents: 1

**Incident Type: 553 Public service**

Incident #	Exp #	Date	Time
2012033	0	2/11/2012	9:12:00PM
2012041	0	2/18/2012	9:40:00PM
2012042	0	2/20/2012	9:30:00AM
2012125	0	5/26/2012	11:00:00AM
2012172	0	7/4/2012	5:30:00PM
2012175	0	7/6/2012	6:00:00PM
2012196	0	8/10/2012	5:00:00PM
2012197	0	8/11/2012	12:30:00PM
2012200	0	8/12/2012	5:00:00PM
2012230	0	9/29/2012	11:00:00AM
2012237	0	10/6/2012	10:41:15AM
2012271	0	11/15/2012	10:30:00AM

Total Incidents: 12

**Incident Type: 554 Assist invalid**

Incident #	Exp #	Date	Time
2012109	0	5/3/2012	9:03:00AM

Total Incidents: 1

**Incident Type: 561 Unauthorized burning**

Incident #	Exp #	Date	Time
2012088	0	4/17/2012	11:11:13PM
2012092	0	4/25/2012	3:10:00PM
2012093	0	4/20/2012	6:30:12PM
2012118	0	5/17/2012	9:00:00PM
2012177	0	7/11/2012	9:30:00PM
2012212	0	9/5/2012	10:13:00AM
2012254	0	10/23/2012	8:07:58PM

Total Incidents: 7

**Incident Type: 600 Good intent call, other**

Incident #	Exp #	Date	Time
2012090	0	4/18/2012	8:20:41PM
2012131	0	6/6/2012	5:05:00AM
2012248	0	10/17/2012	10:54:00PM
2012257	0	10/25/2012	8:07:45AM

Total Incidents: 4

## 2012 Incidents by Type of Situation Found - Full (rev)

**Incident Type: 611 Dispatched & canceled en route**

Incident #	Exp #	Date	Time
2012025	0	1/26/2012	6:10:16PM
2012031	0	2/8/2012	2:56:47PM
2012047	0	2/24/2012	11:20:25AM
2012060	0	3/6/2012	7:50:25PM
2012128	0	5/31/2012	10:45:14AM
2012152	0	6/26/2012	1:48:37AM
2012191	0	8/1/2012	12:31:00PM
2012192	0	8/6/2012	2:48:55PM
2012204	0	8/17/2012	12:05:30AM
2012215	0	9/8/2012	12:50:19PM
2012224	0	9/26/2012	1:45:12PM
2012262	0	11/5/2012	7:37:45AM
2012275	0	11/18/2012	8:45:58AM
2012281	0	11/25/2012	5:44:37PM
2012291	0	11/30/2012	1:33:48PM

Total Incidents: 15

**Incident Type: 621 Wrong location**

Incident #	Exp #	Date	Time
2012244	0	10/15/2012	9:04:20AM

Total Incidents: 1

**Incident Type: 631 Authorized controlled burning**

Incident #	Exp #	Date	Time
2012122	0	5/19/2012	9:09:29PM

Total Incidents: 1



## 2012 Incidents by Type of Situation Found - Full (rev)

**Incident Type: 651 Smoke scare, odor of smoke**

Incident #	Exp #	Date	Time
2012002	0	1/3/2012	12:24:30PM
2012006	0	1/6/2012	6:33:00PM
2012029	0	2/4/2012	10:33:28AM
2012035	0	2/13/2012	8:23:13AM
2012036	0	2/14/2012	7:20:12PM
2012045	0	2/20/2012	8:49:38PM
2012071	0	3/25/2012	2:29:57PM
2012095	0	4/23/2012	7:32:14AM
2012136	0	6/10/2012	7:57:23AM
2012142	0	6/19/2012	4:57:58PM
2012161	0	6/30/2012	11:45:50PM
2012239	0	10/11/2012	2:52:00AM
2012265	0	11/9/2012	5:09:45PM
2012266	0	11/10/2012	10:57:12AM
2012279	0	11/22/2012	11:40:34AM

Total Incidents: 15

**Incident Type: 652 Steam, vapor, fog or dust thought to be smoke**

Incident #	Exp #	Date	Time
2012084	0	4/10/2012	9:36:25AM
2012310	0	12/24/2012	7:24:50AM

Total Incidents: 2

**Incident Type: 671 Hazmat release investigation w/ no hazmat**

Incident #	Exp #	Date	Time
2012063	0	3/10/2012	2:20:15PM
2012096	0	4/23/2012	11:51:47AM
2012097	0	4/23/2012	1:42:21PM
2012138	0	6/18/2012	6:20:20AM
2012264	0	11/9/2012	4:56:32PM

Total Incidents: 5

**Incident Type: 700 False alarm or false call, other**

Incident #	Exp #	Date	Time
2012011	0	1/10/2012	10:09:25AM
2012012	0	1/11/2012	7:31:00PM
2012130	0	6/3/2012	6:24:31PM
2012311	0	12/30/2012	6:25:45AM

Total Incidents: 4

## 2012 Incidents by Type of Situation Found - Full (rev)

**Incident Type: 730 System malfunction, other**

Incident #	Exp #	Date	Time
2012001	0	1/3/2012	12:37:00AM
2012046	0	2/22/2012	12:36:18PM
2012198	0	8/11/2012	1:48:32PM
2012242	0	10/13/2012	4:47:48PM

Total Incidents: 4

**Incident Type: 731 Sprinkler activation due to malfunction**

Incident #	Exp #	Date	Time
2012074	0	3/30/2012	3:45:03PM

Total Incidents: 1

**Incident Type: 733 Smoke detector activation due to malfunction**

Incident #	Exp #	Date	Time
2012067	0	3/18/2012	1:40:43PM
2012174	0	7/6/2012	6:09:12AM
2012227	0	9/28/2012	7:06:03PM
2012229	0	9/29/2012	9:14:16AM

Total Incidents: 4

**Incident Type: 735 Alarm system sounded due to malfunction**

Incident #	Exp #	Date	Time
2012009	0	1/12/2012	9:17:01AM

Total Incidents: 1

**Incident Type: 736 CO detector activation due to malfunction**

Incident #	Exp #	Date	Time
2012055	0	3/2/2012	11:26:24AM

Total Incidents: 1

**Incident Type: 740 Unintentional transmission of alarm, other**

Incident #	Exp #	Date	Time
2012003	0	1/4/2012	6:30:00PM
2012066	0	3/14/2012	8:59:38PM
2012159	0	6/29/2012	6:45:35PM
2012255	0	10/24/2012	2:09:00PM

Total Incidents: 4

2012 Incidents by Type of Situation Found - Full (rev)

**Incident Type: 741 Sprinkler activation, no fire - unintentional**

Incident #	Exp #	Date	Time
2012137	0	6/13/2012	9:32:45AM
2012226	0	9/27/2012	2:03:00AM
			<b>Total Incidents: 2</b>

**Incident Type: 743 Smoke detector activation, no fire - unintentional**

Incident #	Exp #	Date	Time
2012301	0	12/10/2012	12:57:59PM
			<b>Total Incidents: 1</b>

**Incident Type: 744 Detector activation, no fire - unintentional**

Incident #	Exp #	Date	Time
2012181	0	7/20/2012	12:36:18PM
2012193	0	8/8/2012	2:08:20AM
2012203	0	8/16/2012	9:48:00AM
2012231	0	9/29/2012	8:53:26PM
2012235	0	10/2/2012	5:00:39PM
2012297	0	12/3/2012	7:43:58AM
			<b>Total Incidents: 6</b>

**Incident Type: 745 Alarm system sounded, no fire - unintentional**

Incident #	Exp #	Date	Time
2012019	0	1/20/2012	8:52:01AM
2012143	0	6/21/2012	9:45:54AM
2012186	0	7/28/2012	12:02:02AM
2012295	0	12/2/2012	10:58:47AM
			<b>Total Incidents: 4</b>

**Incident Type: 813 Wind storm, tornado/hurricane assessment**

Incident #	Exp #	Date	Time
2012017	0	1/17/2012	10:30:00AM
2012058	0	3/2/2012	3:41:28PM
			<b>Total Incidents: 2</b>

**Incident Type: 815 Severe weather or natural disaster standby**

Incident #	Exp #	Date	Time
2012054	0	2/29/2012	8:14:00AM
2012056	0	3/2/2012	12:00:00PM
			<b>Total Incidents: 2</b>

## 2012 Incidents by Type of Situation Found - Full (rev)

Incident Type: 900 Special type of incident, other

Incident #	Exp #	Date	Time
2011218	0	12/5/2011	7:00:00PM
2011230	0	12/19/2011	7:00:00PM
2012004	0	1/5/2012	7:00:00PM
2012008	0	1/9/2012	6:37:00AM
2012010	0	1/9/2012	7:15:00PM
2012016	0	1/16/2012	7:00:00PM
2012022	0	1/23/2012	6:30:00PM
2012023	0	1/23/2012	6:30:00PM
2012026	0	1/30/2012	8:30:00AM
2012027	0	2/2/2012	7:30:00PM
2012028	0	2/4/2012	8:00:00AM
2012030	0	2/7/2012	6:00:00PM
2012034	0	2/12/2012	11:00:00AM
2012038	0	2/15/2012	6:00:00PM
2012039	0	2/16/2012	10:00:00AM
2012040	0	2/18/2012	10:00:00AM
2012044	0	2/23/2012	6:44:00PM
2012052	0	2/27/2012	6:30:00PM
2012057	0	3/2/2012	3:08:58PM
2012059	0	3/5/2012	7:15:00PM
2012061	0	3/7/2012	7:00:13AM
2012062	0	3/9/2012	2:00:00PM
2012069	0	3/20/2012	4:30:00PM
2012072	0	3/26/2012	7:00:00PM
2012076	0	3/31/2012	11:58:00AM
2012077	0	4/5/2012	7:25:00PM
2012078	0	4/6/2012	7:30:00AM
2012087	0	4/15/2012	9:00:00AM
2012089	0	4/18/2012	6:00:00PM
2012091	0	4/19/2012	11:00:00AM
2012098	0	4/23/2012	6:00:00PM
2012099	0	4/23/2012	7:58:00PM
2012100	0	4/24/2012	8:30:00AM
2012101	0	4/24/2012	7:00:00PM
2012102	0	4/26/2012	6:00:00PM
2012107	0	5/1/2012	6:00:00PM
2012111	0	5/5/2012	8:00:00AM
2012115	0	5/10/2012	5:00:00PM
2012117	0	5/16/2012	6:00:00PM
2012119	0	5/19/2012	7:45:00AM
2012126	0	5/28/2012	1:00:00PM
2012127	0	5/28/2012	6:00:00PM
2012129	0	6/2/2012	9:00:00AM
2012132	0	6/6/2012	6:00:00PM
2012135	0	6/9/2012	5:18:00PM
2012139	0	6/18/2012	8:00:00AM

## 2012 Incidents by Type of Situation Found - Full (rev)

2012140	0	6/18/2012	7:28:00PM
2012144	0	6/21/2012	5:53:00PM
2012151	0	6/25/2012	6:30:00PM
2012154	0	6/27/2012	6:00:00PM
2012155	0	6/28/2012	9:00:00AM
2012171	0	7/2/2012	7:30:00PM
2012180	0	7/18/2012	6:00:00PM
2012182	0	7/21/2012	8:30:00AM
2012183	0	7/24/2012	6:30:00AM
2012184	0	7/24/2012	6:00:00PM
2012187	0	7/28/2012	9:00:00AM
2012189	0	7/30/2012	5:45:00PM
2012202	0	8/15/2012	6:00:00PM
2012205	0	8/20/2012	7:00:00PM
2012206	0	8/22/2012	6:00:00PM
2012207	0	8/25/2012	8:00:00AM
2012209	0	8/27/2012	7:30:00PM
2012210	0	9/1/2012	8:30:00AM
2012216	0	9/10/2012	6:00:00PM
2012217	0	9/10/2012	7:04:00PM
2012218	0	9/16/2012	12:00:00AM
2012219	0	9/17/2012	6:00:00PM
2012220	0	9/19/2012	6:00:00PM
2012221	0	9/22/2012	7:00:00AM
2012222	0	9/24/2012	6:00:00PM
2012223	0	9/24/2012	6:00:00PM
2012247	0	10/16/2012	5:30:00PM
2012250	0	10/20/2012	7:00:00AM
2012258	0	10/26/2012	9:00:00AM
2012269	0	11/13/2012	2:12:35PM
2012270	0	11/15/2012	9:00:00AM
2012273	0	11/12/2012	12:00:00AM
2012274	0	11/12/2012	7:00:00PM
2012277	0	11/19/2012	7:30:00PM
2012278	0	11/19/2012	7:45:00PM
2012280	0	11/24/2012	11:30:00AM
2012282	0	11/26/2012	6:45:00PM
2012283	0	11/26/2012	7:00:00PM
2012292	0	12/1/2012	6:31:00AM
2012296	0	12/2/2012	3:30:00PM
2012298	0	12/6/2012	7:00:00PM
2012299	0	12/8/2012	8:00:00AM
2012300	0	12/9/2012	12:00:00PM
2012302	0	12/15/2012	12:00:00PM
2012303	0	12/16/2012	12:00:00PM
2012304	0	12/16/2012	3:30:00PM
2012305	0	12/16/2012	8:00:00AM
2012306	0	12/17/2012	8:30:00AM

Total Incidents: 94

2012 Incidents by Type of Situation Found - Full (rev)

Incident Type: 911 Citizen complaint

Incident #	Exp #	Date	Time
2012170	0	7/2/2012	1:40:00PM
2012234	0	10/2/2012	11:00:00AM
			Total Incidents: 2

Print Date: 2/14/2013

Total Number of Incidents: 307  
Total Number of Incident Types: 58

2012 By Incident Date - Summary (rev)

Incident Date	Incidents:
12/5/2011	1
12/19/2011	1
1/3/2012	2
1/4/2012	1
1/5/2012	1
1/6/2012	2
1/8/2012	1
1/9/2012	2
1/10/2012	1
1/11/2012	1
1/12/2012	1
1/13/2012	1
1/15/2012	1
1/16/2012	2
1/17/2012	1
1/20/2012	1
1/21/2012	1
1/23/2012	4
1/26/2012	1
1/30/2012	1
2/2/2012	1
2/4/2012	2
2/7/2012	1
2/8/2012	1
2/11/2012	2
2/12/2012	1
2/13/2012	1
2/14/2012	1
2/15/2012	2
2/16/2012	1
2/18/2012	2
2/20/2012	3
2/22/2012	1
2/23/2012	1
2/24/2012	2
2/25/2012	2
2/26/2012	1
2/27/2012	1
2/28/2012	1
2/29/2012	1
3/2/2012	4
3/5/2012	1
3/6/2012	1
3/7/2012	1
3/9/2012	1

## 2012 By Incident Date - Summary (rev)

Incident Date	Incidents:
3/10/2012	2
3/13/2012	1
3/14/2012	1
3/18/2012	1
3/19/2012	1
3/20/2012	1
3/22/2012	1
3/25/2012	1
3/26/2012	1
3/29/2012	1
3/30/2012	2
3/31/2012	1
4/5/2012	1
4/6/2012	1
4/8/2012	2
4/9/2012	2
4/10/2012	2
4/11/2012	2
4/13/2012	3
4/15/2012	1
4/17/2012	1
4/18/2012	2
4/19/2012	1
4/20/2012	1
4/21/2012	1
4/23/2012	5
4/24/2012	2
4/25/2012	1
4/26/2012	1
4/27/2012	3
4/28/2012	1
4/30/2012	1
5/1/2012	1
5/2/2012	1
5/3/2012	1
5/4/2012	1
5/5/2012	2
5/7/2012	1
5/10/2012	2
5/15/2012	1
5/16/2012	1
5/17/2012	1
5/19/2012	4
5/22/2012	1
5/26/2012	2
5/28/2012	2
5/31/2012	1
6/2/2012	1
6/3/2012	1
6/6/2012	2



## 2012 By Incident Date - Summary (rev)

Incident Date	Incidents:
6/8/2012	1
6/9/2012	1
6/10/2012	1
6/13/2012	1
6/18/2012	3
6/19/2012	2
6/21/2012	2
6/22/2012	2
6/23/2012	1
6/24/2012	2
6/25/2012	1
6/26/2012	1
6/27/2012	2
6/28/2012	1
6/29/2012	5
6/30/2012	1
7/1/2012	5
7/2/2012	6
7/4/2012	1
7/5/2012	1
7/6/2012	2
7/10/2012	1
7/11/2012	2
7/15/2012	1
7/16/2012	1
7/18/2012	1
7/20/2012	1
7/21/2012	1
7/24/2012	2
7/27/2012	1
7/28/2012	3
7/30/2012	1
7/31/2012	1
8/1/2012	1
8/6/2012	1
8/8/2012	3
8/10/2012	1
8/11/2012	2
8/12/2012	2
8/15/2012	2
8/16/2012	1
8/17/2012	1
8/20/2012	1
8/22/2012	1
8/25/2012	1
8/26/2012	1
8/27/2012	1
9/1/2012	2
9/5/2012	1
9/6/2012	1

## 2012 By Incident Date - Summary (rev)

Incident Date	Incidents:
9/7/2012	1
9/8/2012	1
9/10/2012	2
9/16/2012	1
9/17/2012	1
9/19/2012	1
9/22/2012	1
9/24/2012	2
9/26/2012	2
9/27/2012	1
9/28/2012	1
9/29/2012	4
9/30/2012	1
10/1/2012	1
10/2/2012	2
10/3/2012	1
10/6/2012	1
10/8/2012	1
10/11/2012	1
10/13/2012	1
10/15/2012	2
10/16/2012	1
10/17/2012	1
10/19/2012	1
10/20/2012	1
10/22/2012	1
10/23/2012	1
10/24/2012	1
10/25/2012	1
10/26/2012	1
10/29/2012	1
11/1/2012	1
11/3/2012	1
11/5/2012	1
11/7/2012	1
11/9/2012	2
11/10/2012	2
11/12/2012	2
11/13/2012	2
11/15/2012	2
11/16/2012	1
11/18/2012	1
11/19/2012	2
11/22/2012	1
11/24/2012	1
11/25/2012	1
11/26/2012	3
11/27/2012	1
11/28/2012	2
11/29/2012	2

2012 By Incident Date - Summary (rev)

Incident Date	Incidents:
11/30/2012	1
12/1/2012	3
12/2/2012	2
12/3/2012	1
12/6/2012	1
12/8/2012	1
12/9/2012	1
12/10/2012	1
12/15/2012	1
12/16/2012	3
12/17/2012	1
12/18/2012	1
12/21/2012	1
12/22/2012	1
12/24/2012	1
12/30/2012	1
<b>Grand Total of Incidents:</b>	<b>307</b>
<b>Total Count of Dates:</b>	<b>211</b>

Print Date: 2/14/2013

**Incident Reports By Date****2012 By Incident Date - Full (rev)****12/5/2011**

<b>Incident #</b>	<b>Exp #</b>	<b>Incident Time</b>	<b>Completed?</b>	<b>Incident Type</b>
2011218	0	7:00:00PM	Yes	900 Special type of incident, other
				<b>Total of Incidents for this date: 1</b>

**12/19/2011**

<b>Incident #</b>	<b>Exp #</b>	<b>Incident Time</b>	<b>Completed?</b>	<b>Incident Type</b>
2011230	0	7:00:00PM	Yes	900 Special type of incident, other
				<b>Total of Incidents for this date: 1</b>

**1/3/2012**

<b>Incident #</b>	<b>Exp #</b>	<b>Incident Time</b>	<b>Completed?</b>	<b>Incident Type</b>
2012001	0	12:37:00AM	Yes	730 System malfunction, other
2012002	0	12:24:30PM	Yes	651 Smoke scare, odor of smoke
				<b>Total of Incidents for this date: 2</b>

**1/4/2012**

<b>Incident #</b>	<b>Exp #</b>	<b>Incident Time</b>	<b>Completed?</b>	<b>Incident Type</b>
2012003	0	6:30:00PM	Yes	740 Unintentional transmission of alarm, other
				<b>Total of Incidents for this date: 1</b>

**1/5/2012**

<b>Incident #</b>	<b>Exp #</b>	<b>Incident Time</b>	<b>Completed?</b>	<b>Incident Type</b>
2012004	0	7:00:00PM	Yes	900 Special type of incident, other
				<b>Total of Incidents for this date: 1</b>

**1/6/2012**

<b>Incident #</b>	<b>Exp #</b>	<b>Incident Time</b>	<b>Completed?</b>	<b>Incident Type</b>
2012005	0	7:00:00AM	No	
2012006	0	6:33:00PM	Yes	651 Smoke scare, odor of smoke
				<b>Total of Incidents for this date: 2</b>

**1/8/2012**

<b>Incident #</b>	<b>Exp #</b>	<b>Incident Time</b>	<b>Completed?</b>	<b>Incident Type</b>
2012007	0	4:25:45AM	Yes	500 Service Call, other
				<b>Total of Incidents for this date: 1</b>

## 2012 By Incident Date - Full (rev)

## 1/9/2012

Incident #	Exp #	Incident Time	Completed?	Incident Type
2012008	0	6:37:00AM	Yes	900 Special type of incident, other
2012010	0	7:15:00PM	Yes	900 Special type of incident, other
<b>Total of Incidents for this date: 2</b>				

## 1/10/2012

Incident #	Exp #	Incident Time	Completed?	Incident Type
2012011	0	10:09:25AM	Yes	700 False alarm or false call, other
<b>Total of Incidents for this date: 1</b>				

## 1/11/2012

Incident #	Exp #	Incident Time	Completed?	Incident Type
2012012	0	7:31:00PM	Yes	700 False alarm or false call, other
<b>Total of Incidents for this date: 1</b>				

## 1/12/2012

Incident #	Exp #	Incident Time	Completed?	Incident Type
2012009	0	9:17:01AM	Yes	735 Alarm system sounded due to malfunction
<b>Total of Incidents for this date: 1</b>				

## 1/13/2012

Incident #	Exp #	Incident Time	Completed?	Incident Type
2012013	0	3:14:00AM	Yes	424 Carbon monoxide incident
<b>Total of Incidents for this date: 1</b>				

## 1/15/2012

Incident #	Exp #	Incident Time	Completed?	Incident Type
2012014	0	2:25:00AM	Yes	231 Chemical reaction rupture of process vessel
<b>Total of Incidents for this date: 1</b>				

## 1/16/2012

Incident #	Exp #	Incident Time	Completed?	Incident Type
2012015	0	6:12:00PM	Yes	352 Extrication of victim(s) from vehicle
2012016	0	7:00:00PM	Yes	900 Special type of incident, other
<b>Total of Incidents for this date: 2</b>				

## 1/17/2012

Incident #	Exp #	Incident Time	Completed?	Incident Type
2012017	0	10:30:00AM	Yes	813 Wind storm, tornado/hurricane assessment
<b>Total of Incidents for this date: 1</b>				

**2012 By Incident Date - Full (rev)**

**1/20/2012**

Incident #	Exp #	Incident Time	Completed?	Incident Type
2012019	0	8:52:01AM	Yes	745 Alarm system sounded, no fire - unintentional
<b>Total of Incidents for this date: 1</b>				

**1/21/2012**

Incident #	Exp #	Incident Time	Completed?	Incident Type
2012020	0	9:38:08PM	Yes	424 Carbon monoxide incident
<b>Total of Incidents for this date: 1</b>				

**1/23/2012**

Incident #	Exp #	Incident Time	Completed?	Incident Type
2012021	0	11:24:09AM	Yes	440 Electrical wiring/equipment problem, other
2012022	0	6:30:00PM	Yes	900 Special type of incident, other
2012023	0	6:30:00PM	No	900 Special type of incident, other
2012024	0	6:00:00PM	No	
<b>Total of Incidents for this date: 4</b>				

**1/26/2012**

Incident #	Exp #	Incident Time	Completed?	Incident Type
2012025	0	6:10:16PM	Yes	611 Dispatched & canceled en route
<b>Total of Incidents for this date: 1</b>				

**1/30/2012**

Incident #	Exp #	Incident Time	Completed?	Incident Type
2012026	0	8:30:00AM	No	900 Special type of incident, other
<b>Total of Incidents for this date: 1</b>				

**2/2/2012**

Incident #	Exp #	Incident Time	Completed?	Incident Type
2012027	0	7:30:00PM	Yes	900 Special type of incident, other
<b>Total of Incidents for this date: 1</b>				

**2/4/2012**

Incident #	Exp #	Incident Time	Completed?	Incident Type
2012028	0	8:00:00AM	Yes	900 Special type of incident, other
2012029	0	10:33:28AM	Yes	651 Smoke scare, odor of smoke
<b>Total of Incidents for this date: 2</b>				

**2/7/2012**

Incident #	Exp #	Incident Time	Completed?	Incident Type
2012030	0	6:00:00PM	Yes	900 Special type of incident, other
<b>Total of Incidents for this date: 1</b>				

2012 By Incident Date - Full (rev)

2/8/2012

Incident #	Exp #	Incident Time	Completed?	Incident Type
2012031	0	2:56:47PM	Yes	611 Dispatched & canceled en route
<b>Total of Incidents for this date: 1</b>				

2/11/2012

Incident #	Exp #	Incident Time	Completed?	Incident Type
2012032	0	4:01:00PM	Yes	111 Building fire
2012033	0	9:12:00PM	Yes	553 Public service
<b>Total of Incidents for this date: 2</b>				

2/12/2012

Incident #	Exp #	Incident Time	Completed?	Incident Type
2012034	0	11:00:00AM	Yes	900 Special type of incident, other
<b>Total of Incidents for this date: 1</b>				

2/13/2012

Incident #	Exp #	Incident Time	Completed?	Incident Type
2012035	0	8:23:13AM	Yes	651 Smoke scare, odor of smoke
<b>Total of Incidents for this date: 1</b>				

2/14/2012

Incident #	Exp #	Incident Time	Completed?	Incident Type
2012036	0	7:20:12PM	Yes	651 Smoke scare, odor of smoke
<b>Total of Incidents for this date: 1</b>				

2/15/2012

Incident #	Exp #	Incident Time	Completed?	Incident Type
2012037	0	2:43:00AM	Yes	445 Arcing, shorted electrical equipment
2012038	0	6:00:00PM	Yes	900 Special type of incident, other
<b>Total of Incidents for this date: 2</b>				

2/16/2012

Incident #	Exp #	Incident Time	Completed?	Incident Type
2012039	0	10:00:00AM	Yes	900 Special type of incident, other
<b>Total of Incidents for this date: 1</b>				

2/18/2012

Incident #	Exp #	Incident Time	Completed?	Incident Type
2012040	0	10:00:00AM	Yes	900 Special type of incident, other
2012041	0	9:40:00PM	Yes	553 Public service
<b>Total of Incidents for this date: 2</b>				

## 2012 By Incident Date - Full (rev)

## 2/20/2012

Incident #	Exp #	Incident Time	Completed?	Incident Type
2012042	0	9:30:00AM	No	553 Public service
2012043	0	2:13:00PM	Yes	413 Oil or other combustible liquid spill
2012045	0	8:49:38PM	Yes	651 Smoke scare, odor of smoke
<b>Total of Incidents for this date: 3</b>				

## 2/22/2012

Incident #	Exp #	Incident Time	Completed?	Incident Type
2012046	0	12:36:18PM	Yes	730 System malfunction, other
<b>Total of Incidents for this date: 1</b>				

## 2/23/2012

Incident #	Exp #	Incident Time	Completed?	Incident Type
2012044	0	6:44:00PM	Yes	900 Special type of incident, other
<b>Total of Incidents for this date: 1</b>				

## 2/24/2012

Incident #	Exp #	Incident Time	Completed?	Incident Type
2012047	0	11:20:25AM	Yes	611 Dispatched & canceled en route
2012048	0	5:15:50PM	Yes	131 Passenger vehicle fire
<b>Total of Incidents for this date: 2</b>				

## 2/25/2012

Incident #	Exp #	Incident Time	Completed?	Incident Type
2012049	0	7:50:19AM	Yes	131 Passenger vehicle fire
2012050	0	6:22:10PM	Yes	352 Extrication of victim(s) from vehicle
<b>Total of Incidents for this date: 2</b>				

## 2/26/2012

Incident #	Exp #	Incident Time	Completed?	Incident Type
2012051	0	11:15:15AM	Yes	411 Gasoline or other flammable liquid spill
<b>Total of Incidents for this date: 1</b>				

## 2/27/2012

Incident #	Exp #	Incident Time	Completed?	Incident Type
2012052	0	6:30:00PM	No	900 Special type of incident, other
<b>Total of Incidents for this date: 1</b>				

## 2/28/2012

Incident #	Exp #	Incident Time	Completed?	Incident Type
2012053	0	9:42:15PM	Yes	353 Removal of victim(s) from stalled elevator
<b>Total of Incidents for this date: 1</b>				



**2012 By Incident Date - Full (rev)**

**2/29/2012**

Incident #	Exp #	Incident Time	Completed?	Incident Type
2012054	0	8:14:00AM	Yes	815 Severe weather or natural disaster standby
<b>Total of Incidents for this date: 1</b>				

**3/2/2012**

Incident #	Exp #	Incident Time	Completed?	Incident Type
2012055	0	11:26:24AM	Yes	736 CO detector activation due to malfunction
2012056	0	12:00:00PM	Yes	815 Severe weather or natural disaster standby
2012057	0	3:08:58PM	Yes	900 Special type of incident, other
2012058	0	3:41:28PM	Yes	813 Wind storm, tornado/hurricane assessment
<b>Total of Incidents for this date: 4</b>				

**3/5/2012**

Incident #	Exp #	Incident Time	Completed?	Incident Type
2012059	0	7:15:00PM	Yes	900 Special type of incident, other
<b>Total of Incidents for this date: 1</b>				

**3/6/2012**

Incident #	Exp #	Incident Time	Completed?	Incident Type
2012060	0	7:50:25PM	Yes	611 Dispatched & canceled en route
<b>Total of Incidents for this date: 1</b>				

**3/7/2012**

Incident #	Exp #	Incident Time	Completed?	Incident Type
2012061	0	7:00:13AM	Yes	900 Special type of incident, other
<b>Total of Incidents for this date: 1</b>				

**3/9/2012**

Incident #	Exp #	Incident Time	Completed?	Incident Type
2012062	0	2:00:00PM	Yes	900 Special type of incident, other
<b>Total of Incidents for this date: 1</b>				

**3/10/2012**

Incident #	Exp #	Incident Time	Completed?	Incident Type
2012063	0	2:20:15PM	Yes	671 Hazmat release investigation w/ no hazmat
2012064	0	7:04:24PM	Yes	352 Extrication of victim(s) from vehicle
<b>Total of Incidents for this date: 2</b>				

**3/13/2012**

Incident #	Exp #	Incident Time	Completed?	Incident Type
2012065	0	4:32:10PM	Yes	424 Carbon monoxide incident
<b>Total of Incidents for this date: 1</b>				

## 2012 By Incident Date - Full (rev)

## 3/14/2012

Incident #	Exp #	Incident Time	Completed?	Incident Type
2012066	0	8:59:38PM	Yes	740 Unintentional transmission of alarm, other
<b>Total of Incidents for this date: 1</b>				

## 3/18/2012

Incident #	Exp #	Incident Time	Completed?	Incident Type
2012067	0	1:40:43PM	Yes	733 Smoke detector activation due to malfunction
<b>Total of Incidents for this date: 1</b>				

## 3/19/2012

Incident #	Exp #	Incident Time	Completed?	Incident Type
2012068	0	1:21:08PM	Yes	142 Brush, or brush and grass mixture fire
<b>Total of Incidents for this date: 1</b>				

## 3/20/2012

Incident #	Exp #	Incident Time	Completed?	Incident Type
2012069	0	4:30:00PM	No	900 Special type of incident, other
<b>Total of Incidents for this date: 1</b>				

## 3/22/2012

Incident #	Exp #	Incident Time	Completed?	Incident Type
2012070	0	10:31:52AM	Yes	413 Oil or other combustible liquid spill
<b>Total of Incidents for this date: 1</b>				

## 3/25/2012

Incident #	Exp #	Incident Time	Completed?	Incident Type
2012071	0	2:29:57PM	Yes	651 Smoke scare, odor of smoke
<b>Total of Incidents for this date: 1</b>				

## 3/26/2012

Incident #	Exp #	Incident Time	Completed?	Incident Type
2012072	0	7:00:00PM	Yes	900 Special type of incident, other
<b>Total of Incidents for this date: 1</b>				

## 3/29/2012

Incident #	Exp #	Incident Time	Completed?	Incident Type
2012073	0	10:19:00PM	Yes	161 Outside storage fire
<b>Total of Incidents for this date: 1</b>				

## 3/30/2012

Incident #	Exp #	Incident Time	Completed?	Incident Type
2012074	0	3:45:03PM	Yes	731 Sprinkler activation due to malfunction
2012075	0	8:56:55PM	Yes	151 Outside rubbish, trash or waste fire
<b>Total of Incidents for this date: 2</b>				

## 2012 By Incident Date - Full (rev)

## 3/31/2012

Incident #	Exp #	Incident Time	Completed?	Incident Type
2012076	0	11:58:00AM	No	900 Special type of incident, other
<b>Total of Incidents for this date: 1</b>				

## 4/5/2012

Incident #	Exp #	Incident Time	Completed?	Incident Type
2012077	0	7:25:00PM	No	900 Special type of incident, other
<b>Total of Incidents for this date: 1</b>				

## 4/6/2012

Incident #	Exp #	Incident Time	Completed?	Incident Type
2012078	0	7:30:00AM	Yes	900 Special type of incident, other
<b>Total of Incidents for this date: 1</b>				

## 4/8/2012

Incident #	Exp #	Incident Time	Completed?	Incident Type
2012079	0	2:17:45PM	Yes	112 Fires in structures other than in a building
2012080	0	4:57:40PM	Yes	111 Building fire
<b>Total of Incidents for this date: 2</b>				

## 4/9/2012

Incident #	Exp #	Incident Time	Completed?	Incident Type
2012081	0	1:29:30PM	Yes	143 Grass fire
2012082	0	8:05:51PM	No	321 EMS call, excluding vehicle accident with injury
<b>Total of Incidents for this date: 2</b>				

## 4/10/2012

Incident #	Exp #	Incident Time	Completed?	Incident Type
2012083	0	12:50:03AM	No	352 Extrication of victim(s) from vehicle
2012084	0	9:36:25AM	Yes	652 Steam, vapor, fog or dust thought to be smoke
<b>Total of Incidents for this date: 2</b>				

## 4/11/2012

Incident #	Exp #	Incident Time	Completed?	Incident Type
2012085	0	1:16:55PM	Yes	100 Fire, other
<b>Total of Incidents for this date: 2</b>				

## 4/13/2012

Incident #	Exp #	Incident Time	Completed?	Incident Type
2012086	0	12:44:26PM	Yes	131 Passenger vehicle fire
<b>Total of Incidents for this date: 3</b>				

## 2012 By Incident Date - Full (rev)

## 4/15/2012

Incident #	Exp #	Incident Time	Completed?	Incident Type
2012087	0	9:00:00AM	Yes	900 Special type of incident, other
<b>Total of Incidents for this date: 1</b>				

## 4/17/2012

Incident #	Exp #	Incident Time	Completed?	Incident Type
2012088	0	11:11:13PM	Yes	561 Unauthorized burning
<b>Total of Incidents for this date: 1</b>				

## 4/18/2012

Incident #	Exp #	Incident Time	Completed?	Incident Type
2012089	0	6:00:00PM	Yes	900 Special type of incident, other
2012090	0	8:20:41PM	Yes	600 Good intent call, other
<b>Total of Incidents for this date: 2</b>				

## 4/19/2012

Incident #	Exp #	Incident Time	Completed?	Incident Type
2012091	0	11:00:00AM	Yes	900 Special type of incident, other
<b>Total of Incidents for this date: 1</b>				

## 4/20/2012

Incident #	Exp #	Incident Time	Completed?	Incident Type
2012093	0	6:30:12PM	Yes	561 Unauthorized burning
<b>Total of Incidents for this date: 1</b>				

## 4/21/2012

Incident #	Exp #	Incident Time	Completed?	Incident Type
2012094	0	7:17:47PM	No	356 High angle rescue
<b>Total of Incidents for this date: 1</b>				

## 4/23/2012

Incident #	Exp #	Incident Time	Completed?	Incident Type
2012095	0	7:32:14AM	Yes	651 Smoke scare, odor of smoke
2012096	0	11:51:47AM	Yes	671 Hazmat release investigation w/ no hazmat
2012097	0	1:42:21PM	Yes	671 Hazmat release investigation w/ no hazmat
2012098	0	6:00:00PM	Yes	900 Special type of incident, other
2012099	0	7:58:00PM	No	900 Special type of incident, other
<b>Total of Incidents for this date: 5</b>				

## 4/24/2012

Incident #	Exp #	Incident Time	Completed?	Incident Type
2012100	0	8:30:00AM	No	900 Special type of incident, other
2012101	0	7:00:00PM	No	900 Special type of incident, other
<b>Total of Incidents for this date: 2</b>				

2012 By Incident Date - Full (rev)

4/25/2012

Incident #	Exp #	Incident Time	Completed?	Incident Type
2012092	0	3:10:00PM	Yes	561 Unauthorized burning
<b>Total of Incidents for this date: 1</b>				

4/26/2012

Incident #	Exp #	Incident Time	Completed?	Incident Type
2012102	0	6:00:00PM	Yes	900 Special type of incident, other
<b>Total of Incidents for this date: 1</b>				

4/27/2012

Incident #	Exp #	Incident Time	Completed?	Incident Type
2012103	0	5:34:56PM	Yes	111 Building fire
<b>Total of Incidents for this date: 3</b>				

4/28/2012

Incident #	Exp #	Incident Time	Completed?	Incident Type
2012104	0	5:54:26AM	Yes	111 Building fire
<b>Total of Incidents for this date: 1</b>				

4/30/2012

Incident #	Exp #	Incident Time	Completed?	Incident Type
2012106	0	12:36:30AM	Yes	111 Building fire
<b>Total of Incidents for this date: 1</b>				

5/1/2012

Incident #	Exp #	Incident Time	Completed?	Incident Type
2012107	0	6:00:00PM	Yes	900 Special type of incident, other
<b>Total of Incidents for this date: 1</b>				

5/2/2012

Incident #	Exp #	Incident Time	Completed?	Incident Type
2012108	0	7:36:15AM	Yes	353 Removal of victim(s) from stalled elevator
<b>Total of Incidents for this date: 1</b>				

5/3/2012

Incident #	Exp #	Incident Time	Completed?	Incident Type
2012109	0	9:03:00AM	Yes	554 Assist invalid
<b>Total of Incidents for this date: 1</b>				

5/4/2012

Incident #	Exp #	Incident Time	Completed?	Incident Type
2012110	0	11:07:00PM	Yes	111 Building fire
<b>Total of Incidents for this date: 1</b>				

## 2012 By Incident Date - Full (rev)

## 5/5/2012

Incident #	Exp #	Incident Time	Completed?	Incident Type
2012111	0	8:00:00AM	Yes	900 Special type of incident, other
2012112	0	3:10:03PM	Yes	100 Fire, other
<b>Total of Incidents for this date: 2</b>				

## 5/7/2012

Incident #	Exp #	Incident Time	Completed?	Incident Type
2012113	0	1:13:30PM	Yes	445 Arcing, shorted electrical equipment
<b>Total of Incidents for this date: 1</b>				

## 5/10/2012

Incident #	Exp #	Incident Time	Completed?	Incident Type
2012114	0	1:12:00AM	Yes	112 Fires in structures other than in a building
2012115	0	5:00:00PM	Yes	900 Special type of incident, other
<b>Total of Incidents for this date: 2</b>				

## 5/15/2012

Incident #	Exp #	Incident Time	Completed?	Incident Type
2012116	0	2:12:00PM	Yes	551 Assist police or other governmental agency
<b>Total of Incidents for this date: 1</b>				

## 5/16/2012

Incident #	Exp #	Incident Time	Completed?	Incident Type
2012117	0	6:00:00PM	Yes	900 Special type of incident, other
<b>Total of Incidents for this date: 1</b>				

## 5/17/2012

Incident #	Exp #	Incident Time	Completed?	Incident Type
2012118	0	9:00:00PM	Yes	561 Unauthorized burning
<b>Total of Incidents for this date: 1</b>				

## 5/19/2012

Incident #	Exp #	Incident Time	Completed?	Incident Type
2012119	0	7:45:00AM	Yes	900 Special type of incident, other
2012120	0	3:57:30PM	Yes	160 Special outside fire, other
2012121	0	8:40:50PM	Yes	131 Passenger vehicle fire
2012122	0	9:09:29PM	Yes	631 Authorized controlled burning
<b>Total of Incidents for this date: 4</b>				

## 5/22/2012

Incident #	Exp #	Incident Time	Completed?	Incident Type
2012123	0	7:08:09PM	No	311 Medical assist, assist EMS crew
<b>Total of Incidents for this date: 1</b>				

## 2012 By Incident Date - Full (rev)

## 5/26/2012

Incident #	Exp #	Incident Time	Completed?	Incident Type
2012124	0	4:00:00AM	Yes	132 Road freight or transport vehicle fire
2012125	0	11:00:00AM	Yes	553 Public service
<b>Total of Incidents for this date: 2</b>				

## 5/28/2012

Incident #	Exp #	Incident Time	Completed?	Incident Type
2012126	0	1:00:00PM	Yes	900 Special type of incident, other
2012127	0	6:00:00PM	Yes	900 Special type of incident, other
<b>Total of Incidents for this date: 2</b>				

## 5/31/2012

Incident #	Exp #	Incident Time	Completed?	Incident Type
2012128	0	10:45:14AM	Yes	611 Dispatched & canceled en route
<b>Total of Incidents for this date: 1</b>				

## 6/2/2012

Incident #	Exp #	Incident Time	Completed?	Incident Type
2012129	0	9:00:00AM	No	900 Special type of incident, other
<b>Total of Incidents for this date: 1</b>				

## 6/3/2012

Incident #	Exp #	Incident Time	Completed?	Incident Type
2012130	0	6:24:31PM	Yes	700 False alarm or false call, other
<b>Total of Incidents for this date: 1</b>				

## 6/6/2012

Incident #	Exp #	Incident Time	Completed?	Incident Type
2012131	0	5:05:00AM	Yes	600 Good intent call, other
2012132	0	6:00:00PM	Yes	900 Special type of incident, other
<b>Total of Incidents for this date: 2</b>				

## 6/8/2012

Incident #	Exp #	Incident Time	Completed?	Incident Type
2012133	0	10:36:17AM	Yes	445 Arcing, shorted electrical equipment
<b>Total of Incidents for this date: 1</b>				

## 6/9/2012

Incident #	Exp #	Incident Time	Completed?	Incident Type
2012135	0	5:18:00PM	No	900 Special type of incident, other
<b>Total of Incidents for this date: 1</b>				

## 2012 By Incident Date - Full (rev)

## 6/10/2012

Incident #	Exp #	Incident Time	Completed?	Incident Type
2012136	0	7:57:23AM	Yes	651 Smoke scare, odor of smoke
<b>Total of Incidents for this date: 1</b>				

## 6/13/2012

Incident #	Exp #	Incident Time	Completed?	Incident Type
2012137	0	9:32:45AM	Yes	741 Sprinkler activation, no fire - unintentional
<b>Total of Incidents for this date: 1</b>				

## 6/18/2012

Incident #	Exp #	Incident Time	Completed?	Incident Type
2012138	0	6:20:20AM	Yes	671 Hazmat release investigation w/ no hazmat
2012139	0	8:00:00AM	Yes	900 Special type of incident, other
2012140	0	7:28:00PM	Yes	900 Special type of incident, other
<b>Total of Incidents for this date: 3</b>				

## 6/19/2012

Incident #	Exp #	Incident Time	Completed?	Incident Type
2012141	0	1:25:58PM	Yes	162 Outside equipment fire
2012142	0	4:57:58PM	Yes	651 Smoke scare, odor of smoke
<b>Total of Incidents for this date: 2</b>				

## 6/21/2012

Incident #	Exp #	Incident Time	Completed?	Incident Type
2012143	0	9:45:54AM	Yes	745 Alarm system sounded, no fire - unintentional
2012144	0	5:53:00PM	Yes	900 Special type of incident, other
<b>Total of Incidents for this date: 2</b>				

## 6/22/2012

Incident #	Exp #	Incident Time	Completed?	Incident Type
2012145	0	6:42:56PM	No	311 Medical assist, assist EMS crew
2012146	0	6:53:18PM	Yes	131 Passenger vehicle fire
<b>Total of Incidents for this date: 2</b>				

## 6/23/2012

Incident #	Exp #	Incident Time	Completed?	Incident Type
2012147	0	9:52:00AM	Yes	150 Outside rubbish fire, other
<b>Total of Incidents for this date: 1</b>				

## 6/24/2012

Incident #	Exp #	Incident Time	Completed?	Incident Type
2012149	0	11:10:35PM	Yes	154 Dumpster or other outside trash receptacle fire
2012150	0	11:30:25PM	Yes	154 Dumpster or other outside trash receptacle fire
<b>Total of Incidents for this date: 2</b>				



**2012 By Incident Date - Full (rev)**

**6/25/2012**

Incident #	Exp #	Incident Time	Completed?	Incident Type
2012151	0	6:30:00PM	No	900 Special type of incident, other
<b>Total of Incidents for this date: 1</b>				

**6/26/2012**

Incident #	Exp #	Incident Time	Completed?	Incident Type
2012152	0	1:48:37AM	Yes	611 Dispatched & canceled en route
<b>Total of Incidents for this date: 1</b>				

**6/27/2012**

Incident #	Exp #	Incident Time	Completed?	Incident Type
2012153	0	8:02:23AM	Yes	170 Cultivated vegetation, crop fire, other
2012154	0	6:00:00PM	Yes	900 Special type of incident, other
<b>Total of Incidents for this date: 2</b>				

**6/28/2012**

Incident #	Exp #	Incident Time	Completed?	Incident Type
2012155	0	9:00:00AM	No	900 Special type of incident, other
<b>Total of Incidents for this date: 1</b>				

**6/29/2012**

Incident #	Exp #	Incident Time	Completed?	Incident Type
2012156	0	5:25:01PM	Yes	445 Arcing, shorted electrical equipment
2012157	0	5:42:00PM	Yes	444 Power line down
2012158	0	5:43:00PM	Yes	445 Arcing, shorted electrical equipment
2012159	0	6:45:35PM	Yes	740 Unintentional transmission of alarm, other
2012160	0	7:21:00PM	Yes	500 Service Call, other
<b>Total of Incidents for this date: 5</b>				

**6/30/2012**

Incident #	Exp #	Incident Time	Completed?	Incident Type
2012161	0	11:45:50PM	No	651 Smoke scare, odor of smoke
<b>Total of Incidents for this date: 1</b>				

**7/1/2012**

Incident #	Exp #	Incident Time	Completed?	Incident Type
2012162	0	3:34:00AM	Yes	445 Arcing, shorted electrical equipment
2012163	0	12:58:20PM	Yes	111 Building fire
2012164	0	6:49:23PM	Yes	445 Arcing, shorted electrical equipment
2012165	0	6:49:23PM	Yes	445 Arcing, shorted electrical equipment
2012166	0	7:01:00PM	Yes	445 Arcing, shorted electrical equipment
<b>Total of Incidents for this date: 5</b>				

## 2012 By Incident Date - Full (rev)

## 7/2/2012

Incident #	Exp #	Incident Time	Completed?	Incident Type
2012167	0	7:35:21AM	Yes	131 Passenger vehicle fire
2012168	0	10:52:51AM	Yes	444 Power line down
2012169	0	1:06:39PM	Yes	445 Arcing, shorted electrical equipment
2012170	0	1:40:00PM	Yes	911 Citizen complaint
2012171	0	7:30:00PM	Yes	900 Special type of incident, other
<b>Total of Incidents for this date: 6</b>				

## 7/4/2012

Incident #	Exp #	Incident Time	Completed?	Incident Type
2012172	0	5:30:00PM	Yes	553 Public service
<b>Total of Incidents for this date: 1</b>				

## 7/5/2012

Incident #	Exp #	Incident Time	Completed?	Incident Type
2012173	0	5:03:20PM	Yes	445 Arcing, shorted electrical equipment
<b>Total of Incidents for this date: 1</b>				

## 7/6/2012

Incident #	Exp #	Incident Time	Completed?	Incident Type
2012174	0	6:09:12AM	Yes	733 Smoke detector activation due to malfunction
2012175	0	6:00:00PM	Yes	553 Public service
<b>Total of Incidents for this date: 2</b>				

## 7/10/2012

Incident #	Exp #	Incident Time	Completed?	Incident Type
2012000	0	12:00:00AM	No	
<b>Total of Incidents for this date: 1</b>				

## 7/11/2012

Incident #	Exp #	Incident Time	Completed?	Incident Type
2012176	0	7:09:01PM	Yes	111 Building fire
2012177	0	9:30:00PM	Yes	561 Unauthorized burning
<b>Total of Incidents for this date: 2</b>				

## 7/15/2012

Incident #	Exp #	Incident Time	Completed?	Incident Type
2012178	0	10:46:00AM	No	
<b>Total of Incidents for this date: 1</b>				

## 7/16/2012

Incident #	Exp #	Incident Time	Completed?	Incident Type
2012179	0	12:56:11PM	Yes	411 Gasoline or other flammable liquid spill
<b>Total of Incidents for this date: 1</b>				

## 2012 By Incident Date - Full (rev)

## 7/18/2012

Incident #	Exp #	Incident Time	Completed?	Incident Type
2012180	0	6:00:00PM	No	900 Special type of incident, other
<b>Total of Incidents for this date: 1</b>				

## 7/20/2012

Incident #	Exp #	Incident Time	Completed?	Incident Type
2012181	0	12:36:18PM	Yes	744 Detector activation, no fire - unintentional
<b>Total of Incidents for this date: 1</b>				

## 7/21/2012

Incident #	Exp #	Incident Time	Completed?	Incident Type
2012182	0	8:30:00AM	No	900 Special type of incident, other
<b>Total of Incidents for this date: 1</b>				

## 7/24/2012

Incident #	Exp #	Incident Time	Completed?	Incident Type
2012183	0	6:30:00AM	Yes	900 Special type of incident, other
2012184	0	6:00:00PM	No	900 Special type of incident, other
<b>Total of Incidents for this date: 2</b>				

## 7/27/2012

Incident #	Exp #	Incident Time	Completed?	Incident Type
2012185	0	7:52:30PM	No	445 Arcing, shorted electrical equipment
<b>Total of Incidents for this date: 1</b>				

## 7/28/2012

Incident #	Exp #	Incident Time	Completed?	Incident Type
2012186	0	12:02:02AM	Yes	745 Alarm system sounded, no fire - unintentional
2012187	0	9:00:00AM	Yes	900 Special type of incident, other
2012188	0	12:00:00PM	No	
<b>Total of Incidents for this date: 3</b>				

## 7/30/2012

Incident #	Exp #	Incident Time	Completed?	Incident Type
2012189	0	5:45:00PM	Yes	900 Special type of incident, other
<b>Total of Incidents for this date: 1</b>				

## 7/31/2012

Incident #	Exp #	Incident Time	Completed?	Incident Type
2012190	0	8:01:00PM	Yes	151 Outside rubbish, trash or waste fire
<b>Total of Incidents for this date: 1</b>				

## 2012 By Incident Date - Full (rev)

## 8/1/2012

Incident #	Exp #	Incident Time	Completed?	Incident Type
2012191	0	12:31:00PM	Yes	611 Dispatched & canceled en route
<b>Total of Incidents for this date: 1</b>				

## 8/6/2012

Incident #	Exp #	Incident Time	Completed?	Incident Type
2012192	0	2:48:55PM	Yes	611 Dispatched & canceled en route
<b>Total of Incidents for this date: 1</b>				

## 8/8/2012

Incident #	Exp #	Incident Time	Completed?	Incident Type
2012193	0	2:08:20AM	Yes	744 Detector activation, no fire - unintentional
2012194	0	1:14:12PM	Yes	131 Passenger vehicle fire
2012195	0	1:43:21PM	Yes	142 Brush, or brush and grass mixture fire
<b>Total of Incidents for this date: 3</b>				

## 8/10/2012

Incident #	Exp #	Incident Time	Completed?	Incident Type
2012196	0	5:00:00PM	Yes	553 Public service
<b>Total of Incidents for this date: 1</b>				

## 8/11/2012

Incident #	Exp #	Incident Time	Completed?	Incident Type
2012197	0	12:30:00PM	No	553 Public service
2012198	0	1:48:32PM	Yes	730 System malfunction, other
<b>Total of Incidents for this date: 2</b>				

## 8/12/2012

Incident #	Exp #	Incident Time	Completed?	Incident Type
2012199	0	4:27:27PM	Yes	143 Grass fire
2012200	0	5:00:00PM	Yes	553 Public service
<b>Total of Incidents for this date: 2</b>				

## 8/15/2012

Incident #	Exp #	Incident Time	Completed?	Incident Type
2012201	0	12:02:06PM	Yes	111 Building fire
2012202	0	6:00:00PM	Yes	900 Special type of incident, other
<b>Total of Incidents for this date: 2</b>				

## 8/16/2012

Incident #	Exp #	Incident Time	Completed?	Incident Type
2012203	0	9:48:00AM	Yes	744 Detector activation, no fire - unintentional
<b>Total of Incidents for this date: 1</b>				

## 2012 By Incident Date - Full (rev)

8/17/2012

Incident #	Exp #	Incident Time	Completed?	Incident Type
2012204	0	12:05:30AM	Yes	611 Dispatched & canceled en route
<b>Total of Incidents for this date: 1</b>				

8/20/2012

Incident #	Exp #	Incident Time	Completed?	Incident Type
2012205	0	7:00:00PM	Yes	900 Special type of incident, other
<b>Total of Incidents for this date: 1</b>				

8/22/2012

Incident #	Exp #	Incident Time	Completed?	Incident Type
2012206	0	6:00:00PM	Yes	900 Special type of incident, other
<b>Total of Incidents for this date: 1</b>				

8/25/2012

Incident #	Exp #	Incident Time	Completed?	Incident Type
2012207	0	8:00:00AM	Yes	900 Special type of incident, other
<b>Total of Incidents for this date: 1</b>				

8/26/2012

Incident #	Exp #	Incident Time	Completed?	Incident Type
2012208	0	10:33:30AM	Yes	131 Passenger vehicle fire
<b>Total of Incidents for this date: 1</b>				

8/27/2012

Incident #	Exp #	Incident Time	Completed?	Incident Type
2012209	0	7:30:00PM	Yes	900 Special type of incident, other
<b>Total of Incidents for this date: 1</b>				

9/1/2012

Incident #	Exp #	Incident Time	Completed?	Incident Type
2012210	0	8:30:00AM	Yes	900 Special type of incident, other
2012211	0	10:07:50PM	Yes	154 Dumpster or other outside trash receptacle fire
<b>Total of Incidents for this date: 2</b>				

9/5/2012

Incident #	Exp #	Incident Time	Completed?	Incident Type
2012212	0	10:13:00AM	Yes	561 Unauthorized burning
<b>Total of Incidents for this date: 1</b>				

9/6/2012

Incident #	Exp #	Incident Time	Completed?	Incident Type
2012213	0	12:27:45PM	No	412 Gas leak (natural gas or LPG)
<b>Total of Incidents for this date: 1</b>				

## 2012 By Incident Date - Full (rev)

## 9/7/2012

Incident #	Exp #	Incident Time	Completed?	Incident Type
2012214	0	4:41:00PM	No	352 Extrication of victim(s) from vehicle
<b>Total of Incidents for this date: 1</b>				

## 9/8/2012

Incident #	Exp #	Incident Time	Completed?	Incident Type
2012215	0	12:50:19PM	Yes	611 Dispatched & canceled en route
<b>Total of Incidents for this date: 1</b>				

## 9/10/2012

Incident #	Exp #	Incident Time	Completed?	Incident Type
2012216	0	6:00:00PM	No	900 Special type of incident, other
2012217	0	7:04:00PM	No	900 Special type of incident, other
<b>Total of Incidents for this date: 2</b>				

## 9/16/2012

Incident #	Exp #	Incident Time	Completed?	Incident Type
2012218	0	12:00:00AM	No	900 Special type of incident, other
<b>Total of Incidents for this date: 1</b>				

## 9/17/2012

Incident #	Exp #	Incident Time	Completed?	Incident Type
2012219	0	6:00:00PM	No	900 Special type of incident, other
<b>Total of Incidents for this date: 1</b>				

## 9/19/2012

Incident #	Exp #	Incident Time	Completed?	Incident Type
2012220	0	6:00:00PM	Yes	900 Special type of incident, other
<b>Total of Incidents for this date: 1</b>				

## 9/22/2012

Incident #	Exp #	Incident Time	Completed?	Incident Type
2012221	0	7:00:00AM	Yes	900 Special type of incident, other
<b>Total of Incidents for this date: 1</b>				

## 9/24/2012

Incident #	Exp #	Incident Time	Completed?	Incident Type
2012222	0	6:00:00PM	Yes	900 Special type of incident, other
2012223	0	6:00:00PM	No	900 Special type of incident, other
<b>Total of Incidents for this date: 2</b>				

## 2012 By Incident Date - Full (rev)

## 9/26/2012

Incident #	Exp #	Incident Time	Completed?	Incident Type
2012224	0	1:45:12PM	Yes	611 Dispatched & canceled en route
2012225	0	6:11:00PM	Yes	412 Gas leak (natural gas or LPG)
<b>Total of Incidents for this date: 2</b>				

## 9/27/2012

Incident #	Exp #	Incident Time	Completed?	Incident Type
2012226	0	2:03:00AM	Yes	741 Sprinkler activation, no fire - unintentional
<b>Total of Incidents for this date: 1</b>				

## 9/28/2012

Incident #	Exp #	Incident Time	Completed?	Incident Type
2012227	0	7:06:03PM	Yes	733 Smoke detector activation due to malfunction
<b>Total of Incidents for this date: 1</b>				

## 9/29/2012

Incident #	Exp #	Incident Time	Completed?	Incident Type
2012228	0	6:13:48AM	No	352 Extrication of victim(s) from vehicle
2012229	0	9:14:16AM	Yes	733 Smoke detector activation due to malfunction
2012230	0	11:00:00AM	Yes	553 Public service
2012231	0	8:53:26PM	Yes	744 Detector activation, no fire - unintentional
<b>Total of Incidents for this date: 4</b>				

## 9/30/2012

Incident #	Exp #	Incident Time	Completed?	Incident Type
2012232	0	1:30:20PM	Yes	113 Cooking fire, confined to container
<b>Total of Incidents for this date: 1</b>				

## 10/1/2012

Incident #	Exp #	Incident Time	Completed?	Incident Type
2012233	0	4:07:00PM	Yes	352 Extrication of victim(s) from vehicle
<b>Total of Incidents for this date: 1</b>				

## 10/2/2012

Incident #	Exp #	Incident Time	Completed?	Incident Type
2012234	0	11:00:00AM	Yes	911 Citizen complaint
2012235	0	5:00:39PM	Yes	744 Detector activation, no fire - unintentional
<b>Total of Incidents for this date: 2</b>				

## 10/3/2012

Incident #	Exp #	Incident Time	Completed?	Incident Type
2012236	0	5:39:00AM	Yes	352 Extrication of victim(s) from vehicle
<b>Total of Incidents for this date: 1</b>				

2012 By Incident Date - Full (rev)

10/6/2012

Incident #	Exp #	Incident Time	Completed?	Incident Type
2012237	0	10:41:15AM	Yes	553 Public service
<b>Total of Incidents for this date: 1</b>				

10/8/2012

Incident #	Exp #	Incident Time	Completed?	Incident Type
2012238	0	9:26:48AM	Yes	352 Extrication of victim(s) from vehicle
<b>Total of Incidents for this date: 1</b>				

10/11/2012

Incident #	Exp #	Incident Time	Completed?	Incident Type
2012239	0	2:52:00AM	Yes	651 Smoke scare, odor of smoke
<b>Total of Incidents for this date: 1</b>				

10/13/2012

Incident #	Exp #	Incident Time	Completed?	Incident Type
2012242	0	4:47:48PM	Yes	730 System malfunction, other
<b>Total of Incidents for this date: 1</b>				

10/15/2012

Incident #	Exp #	Incident Time	Completed?	Incident Type
2012244	0	9:04:20AM	Yes	621 Wrong location
2012245	0	9:04:20AM	Yes	412 Gas leak (natural gas or LPG)
<b>Total of Incidents for this date: 2</b>				

10/16/2012

Incident #	Exp #	Incident Time	Completed?	Incident Type
2012247	0	5:30:00PM	Yes	900 Special type of incident, other
<b>Total of Incidents for this date: 1</b>				

10/17/2012

Incident #	Exp #	Incident Time	Completed?	Incident Type
2012248	0	10:54:00PM	Yes	600 Good intent call, other
<b>Total of Incidents for this date: 1</b>				

10/19/2012

Incident #	Exp #	Incident Time	Completed?	Incident Type
2012249	0	10:55:25AM	Yes	424 Carbon monoxide incident
<b>Total of Incidents for this date: 1</b>				

10/20/2012

Incident #	Exp #	Incident Time	Completed?	Incident Type
2012250	0	7:00:00AM	Yes	900 Special type of incident, other
<b>Total of Incidents for this date: 1</b>				



**2012 By Incident Date - Full (rev)**

**10/22/2012**

Incident #	Exp #	Incident Time	Completed?	Incident Type
2012251	0	6:20:00PM	Yes	445 Arcing, shorted electrical equipment
<b>Total of Incidents for this date: 1</b>				

**10/23/2012**

Incident #	Exp #	Incident Time	Completed?	Incident Type
2012254	0	8:07:58PM	Yes	561 Unauthorized burning
<b>Total of Incidents for this date: 1</b>				

**10/24/2012**

Incident #	Exp #	Incident Time	Completed?	Incident Type
2012255	0	2:09:00PM	Yes	740 Unintentional transmission of alarm, other
<b>Total of Incidents for this date: 1</b>				

**10/25/2012**

Incident #	Exp #	Incident Time	Completed?	Incident Type
2012257	0	8:07:45AM	Yes	600 Good intent call, other
<b>Total of Incidents for this date: 1</b>				

**10/26/2012**

Incident #	Exp #	Incident Time	Completed?	Incident Type
2012258	0	9:00:00AM	Yes	900 Special type of incident, other
<b>Total of Incidents for this date: 1</b>				

**10/29/2012**

Incident #	Exp #	Incident Time	Completed?	Incident Type
2012259	0	12:11:22AM	Yes	132 Road freight or transport vehicle fire
<b>Total of Incidents for this date: 1</b>				

**11/1/2012**

Incident #	Exp #	Incident Time	Completed?	Incident Type
2012260	0	8:42:29AM	Yes	140 Natural vegetation fire, other
<b>Total of Incidents for this date: 1</b>				

**11/3/2012**

Incident #	Exp #	Incident Time	Completed?	Incident Type
2012261	0	2:58:00AM	Yes	100 Fire, other
<b>Total of Incidents for this date: 1</b>				

**11/5/2012**

Incident #	Exp #	Incident Time	Completed?	Incident Type
2012262	0	7:37:45AM	Yes	611 Dispatched & canceled en route
<b>Total of Incidents for this date: 1</b>				

## 2012 By Incident Date - Full (rev)

## 11/7/2012

Incident #	Exp #	Incident Time	Completed?	Incident Type
2012263	0	2:26:00PM	Yes	412 Gas leak (natural gas or LPG)
<b>Total of Incidents for this date: 1</b>				

## 11/9/2012

Incident #	Exp #	Incident Time	Completed?	Incident Type
2012264	0	4:56:32PM	Yes	671 Hazmat release investigation w/ no hazmat
2012265	0	5:09:45PM	Yes	651 Smoke scare, odor of smoke
<b>Total of Incidents for this date: 2</b>				

## 11/10/2012

Incident #	Exp #	Incident Time	Completed?	Incident Type
2012266	0	10:57:12AM	Yes	651 Smoke scare, odor of smoke
2012267	0	11:02:15AM	Yes	353 Removal of victim(s) from stalled elevator
<b>Total of Incidents for this date: 2</b>				

## 11/12/2012

Incident #	Exp #	Incident Time	Completed?	Incident Type
2012273	0	12:00:00AM	No	900 Special type of incident, other
2012274	0	7:00:00PM	No	900 Special type of incident, other
<b>Total of Incidents for this date: 2</b>				

## 11/13/2012

Incident #	Exp #	Incident Time	Completed?	Incident Type
2012268	0	7:47:30AM	Yes	445 Arcing, shorted electrical equipment
2012269	0	2:12:35PM	Yes	900 Special type of incident, other
<b>Total of Incidents for this date: 2</b>				

## 11/15/2012

Incident #	Exp #	Incident Time	Completed?	Incident Type
2012270	0	9:00:00AM	Yes	900 Special type of incident, other
2012271	0	10:30:00AM	No	553 Public service
<b>Total of Incidents for this date: 2</b>				

## 11/16/2012

Incident #	Exp #	Incident Time	Completed?	Incident Type
2012272	0	12:49:00PM	Yes	445 Arcing, shorted electrical equipment
<b>Total of Incidents for this date: 1</b>				

## 11/18/2012

Incident #	Exp #	Incident Time	Completed?	Incident Type
2012275	0	8:45:58AM	Yes	611 Dispatched & canceled en route
<b>Total of Incidents for this date: 1</b>				

## 2012 By Incident Date - Full (rev)

## 11/19/2012

Incident #	Exp #	Incident Time	Completed?	Incident Type
2012277	0	7:30:00PM	No	900 Special type of incident, other
2012278	0	7:45:00PM	Yes	900 Special type of incident, other
<b>Total of Incidents for this date: 2</b>				

## 11/22/2012

Incident #	Exp #	Incident Time	Completed?	Incident Type
2012279	0	11:40:34AM	Yes	651 Smoke scare, odor of smoke
<b>Total of Incidents for this date: 1</b>				

## 11/24/2012

Incident #	Exp #	Incident Time	Completed?	Incident Type
2012280	0	11:30:00AM	No	900 Special type of incident, other
<b>Total of Incidents for this date: 1</b>				

## 11/25/2012

Incident #	Exp #	Incident Time	Completed?	Incident Type
2012281	0	5:44:37PM	Yes	611 Dispatched & canceled en route
<b>Total of Incidents for this date: 1</b>				

## 11/26/2012

Incident #	Exp #	Incident Time	Completed?	Incident Type
2012282	0	6:45:00PM	Yes	900 Special type of incident, other
2012283	0	7:00:00PM	Yes	900 Special type of incident, other
2012284	0	11:13:29PM	No	142 Brush, or brush and grass mixture fire
<b>Total of Incidents for this date: 3</b>				

## 11/27/2012

Incident #	Exp #	Incident Time	Completed?	Incident Type
2012285	0	9:58:00PM	No	132 Road freight or transport vehicle fire
<b>Total of Incidents for this date: 1</b>				

## 11/28/2012

Incident #	Exp #	Incident Time	Completed?	Incident Type
2012276	0	1:34:00PM	No	131 Passenger vehicle fire
2012287	0	5:37:50PM	Yes	113 Cooking fire, confined to container
<b>Total of Incidents for this date: 2</b>				

## 11/29/2012

Incident #	Exp #	Incident Time	Completed?	Incident Type
2012289	0	1:18:18PM	Yes	142 Brush, or brush and grass mixture fire
2012290	0	10:17:00PM	No	445 Arcing, shorted electrical equipment
<b>Total of Incidents for this date: 2</b>				

## 2012 By Incident Date - Full (rev)

## 11/30/2012

Incident #	Exp #	Incident Time	Completed?	Incident Type
2012291	0	1:33:48PM	Yes	611 Dispatched & canceled en route
<b>Total of Incidents for this date: 1</b>				

## 12/1/2012

Incident #	Exp #	Incident Time	Completed?	Incident Type
2012292	0	6:31:00AM	Yes	900 Special type of incident, other
2012293	0	10:16:00AM	Yes	100 Fire, other
2012294	0	9:50:13PM	No	111 Building fire
<b>Total of Incidents for this date: 3</b>				

## 12/2/2012

Incident #	Exp #	Incident Time	Completed?	Incident Type
2012295	0	10:58:47AM	No	745 Alarm system sounded, no fire - unintentional
2012296	0	3:30:00PM	No	900 Special type of incident, other
<b>Total of Incidents for this date: 2</b>				

## 12/3/2012

Incident #	Exp #	Incident Time	Completed?	Incident Type
2012297	0	7:43:58AM	No	744 Detector activation, no fire - unintentional
<b>Total of Incidents for this date: 1</b>				

## 12/6/2012

Incident #	Exp #	Incident Time	Completed?	Incident Type
2012298	0	7:00:00PM	No	900 Special type of incident, other
<b>Total of Incidents for this date: 1</b>				

## 12/8/2012

Incident #	Exp #	Incident Time	Completed?	Incident Type
2012299	0	8:00:00AM	Yes	900 Special type of incident, other
<b>Total of Incidents for this date: 1</b>				

## 12/9/2012

Incident #	Exp #	Incident Time	Completed?	Incident Type
2012300	0	12:00:00PM	No	900 Special type of incident, other
<b>Total of Incidents for this date: 1</b>				

## 12/10/2012

Incident #	Exp #	Incident Time	Completed?	Incident Type
2012301	0	12:57:59PM	Yes	743 Smoke detector activation, no fire - unintentional
<b>Total of Incidents for this date: 1</b>				

**2012 By Incident Date - Full (rev)**

**12/15/2012**

Incident #	Exp #	Incident Time	Completed?	Incident Type
2012302	0	12:00:00PM	No	900 Special type of incident, other
<b>Total of Incidents for this date: 1</b>				

**12/16/2012**

Incident #	Exp #	Incident Time	Completed?	Incident Type
2012303	0	12:00:00PM	No	900 Special type of incident, other
2012304	0	3:30:00PM	No	900 Special type of incident, other
2012305	0	8:00:00AM	No	900 Special type of incident, other
<b>Total of Incidents for this date: 3</b>				

**12/17/2012**

Incident #	Exp #	Incident Time	Completed?	Incident Type
2012306	0	8:30:00AM	No	900 Special type of incident, other
<b>Total of Incidents for this date: 1</b>				

**12/18/2012**

Incident #	Exp #	Incident Time	Completed?	Incident Type
2012307	0	12:11:30AM	Yes	352 Extrication of victim(s) from vehicle
<b>Total of Incidents for this date: 1</b>				

**12/21/2012**

Incident #	Exp #	Incident Time	Completed?	Incident Type
2012308	0	1:09:00AM	No	111 Building fire
<b>Total of Incidents for this date: 1</b>				

**12/22/2012**

Incident #	Exp #	Incident Time	Completed?	Incident Type
2012309	0	10:01:30PM	No	410 Flammable gas or liquid condition, other
<b>Total of Incidents for this date: 1</b>				

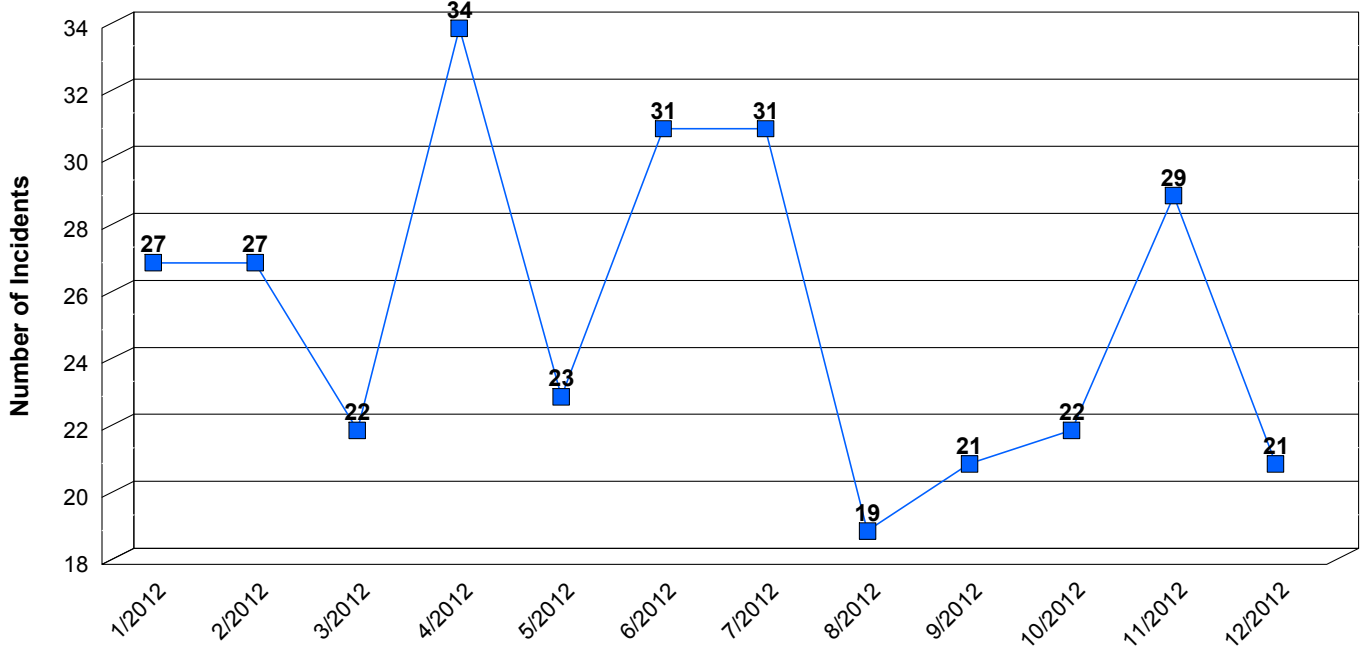
**12/24/2012**

Incident #	Exp #	Incident Time	Completed?	Incident Type
2012310	0	7:24:50AM	No	652 Steam, vapor, fog or dust thought to be smoke
<b>Total of Incidents for this date: 1</b>				

**12/30/2012**

Incident #	Exp #	Incident Time	Completed?	Incident Type
2012311	0	6:25:45AM	No	700 False alarm or false call, other
<b>Total of Incidents for this date: 1</b>				

2012 Incident Reporting by Month - Graph (rev)



Plotted points on Graph read from left to right.

Period:	# of Incidents:
1/2012	27
2/2012	27
3/2012	22
4/2012	34
5/2012	23
6/2012	31
7/2012	31
8/2012	19
9/2012	21
10/2012	22

11/2012

29

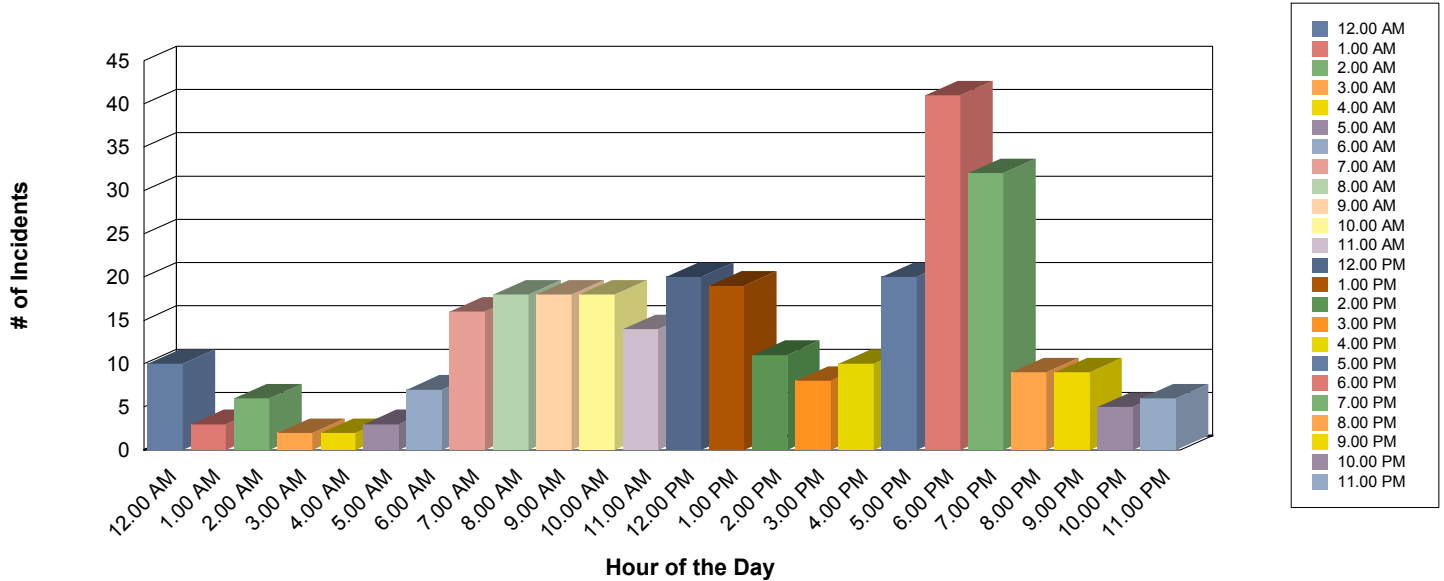
12/2012

21

Print Date: 2/14/2013

**Total Incidents:** 307

# Incident Totals by Hour



**Hour of the Day: 12.00 AM**

Total # of Incidents: **10.00**      % of Total Incidents: **3.26%**

**Hour of the Day: 1.00 AM**

Total # of Incidents: **3.00**      % of Total Incidents: **0.98%**

**Hour of the Day: 2.00 AM**

Total # of Incidents: **6.00**      % of Total Incidents: **1.95%**

**Hour of the Day: 3.00 AM**

Total # of Incidents: **2.00**      % of Total Incidents: **0.65%**

**Hour of the Day: 4.00 AM**

Total # of Incidents: **2.00**      % of Total Incidents: **0.65%**

**Hour of the Day: 5.00 AM**

Total # of Incidents: **3.00**      % of Total Incidents: **0.98%**

**Hour of the Day: 6.00 AM**

Total # of Incidents: **7.00**      % of Total Incidents: **2.28%**

**Hour of the Day: 7.00 AM**

Total # of Incidents: **16.00**      % of Total Incidents: **5.21%**

**Hour of the Day: 8.00 AM**

Total # of Incidents: **18.00**      % of Total Incidents: **5.86%**

**Hour of the Day: 9.00 AM**

Total # of Incidents: **18.00**      % of Total Incidents: **5.86%**

**Hour of the Day: 10.00 AM**

Total # of Incidents: **18.00**      % of Total Incidents: **5.86%**

**Hour of the Day: 11.00 AM**



Total # of Incidents:	<b>14.00</b>	% of Total Incidents:	<b>4.56%</b>
<b>Hour of the Day:</b>	<b>12.00 PM</b>		
Total # of Incidents:	<b>20.00</b>	% of Total Incidents:	<b>6.51%</b>
<b>Hour of the Day:</b>	<b>1.00 PM</b>		
Total # of Incidents:	<b>19.00</b>	% of Total Incidents:	<b>6.19%</b>
<b>Hour of the Day:</b>	<b>2.00 PM</b>		
Total # of Incidents:	<b>11.00</b>	% of Total Incidents:	<b>3.58%</b>
<b>Hour of the Day:</b>	<b>3.00 PM</b>		
Total # of Incidents:	<b>8.00</b>	% of Total Incidents:	<b>2.61%</b>
<b>Hour of the Day:</b>	<b>4.00 PM</b>		
Total # of Incidents:	<b>10.00</b>	% of Total Incidents:	<b>3.26%</b>
<b>Hour of the Day:</b>	<b>5.00 PM</b>		
Total # of Incidents:	<b>20.00</b>	% of Total Incidents:	<b>6.51%</b>
<b>Hour of the Day:</b>	<b>6.00 PM</b>		
Total # of Incidents:	<b>41.00</b>	% of Total Incidents:	<b>13.36%</b>
<b>Hour of the Day:</b>	<b>7.00 PM</b>		
Total # of Incidents:	<b>32.00</b>	% of Total Incidents:	<b>10.42%</b>
<b>Hour of the Day:</b>	<b>8.00 PM</b>		
Total # of Incidents:	<b>9.00</b>	% of Total Incidents:	<b>2.93%</b>
<b>Hour of the Day:</b>	<b>9.00 PM</b>		
Total # of Incidents:	<b>9.00</b>	% of Total Incidents:	<b>2.93%</b>
<b>Hour of the Day:</b>	<b>10.00 PM</b>		
Total # of Incidents:	<b>5.00</b>	% of Total Incidents:	<b>1.63%</b>
<b>Hour of the Day:</b>	<b>11.00 PM</b>		
Total # of Incidents:	<b>6.00</b>	% of Total Incidents:	<b>1.95%</b>
<b>Grand Total Incidents:</b>	<b>307.00</b>		

**2012 Incident Reports by Fixed Property Use - Summary**

<b>Fixed Property Use</b>	<b>Total Incidents:</b>
000 Property Use, Other	2
131 Church, mosque, synagogue, temple, chapel	1
155 Courthouse	1
160 Eating, drinking places	1
161 Restaurant or cafeteria	6
171 Airport passenger terminal	1
183 Movie theater	1
200 Educational, other	2
213 Elementary school, including kindergarten	3
241 Adult education center, college classroom	2
311 24-hour care Nursing homes, 4 or more persons	6
321 Mental retardation/development disability facility	2
323 Asylum, mental institution	1
331 Hospital - medical or psychiatric	3
361 Jail, prison (not juvenile)	1
400 Residential, other	2
419 1 or 2 family dwelling	41
429 Multifamily dwellings	20
439 Boarding/rooming house, residential hotels	1
500 Mercantile, business, other	3
539 Household goods, sales, repairs	1
559 Recreational, hobby, home repair sales, pet store	2
571 Service station, gas station	2
579 Motor vehicle or boat sales, services, repair	1
581 Department or discount store	4
599 Business office	8
615 Electric generating plant	2
640 Utility or Distribution system, other	1
642 Electrical distribution	9
700 Manufacturing, processing	6
800 Storage, other	2
807 Outside material storage area	1
808 Outbuilding or shed	1
816 Grain elevator, silo	1
881 Parking garage, (detached residential garage)	1
888 Fire station	72
900 Outside or special property, other	2
926 Outbuilding, protective shelter	1
931 Open land or field	7
938 Graded and cared-for plots of land	19
946 Lake, river, stream	1
960 Street, other	2
961 Highway or divided highway	11

2012 Incident Reports by Fixed Property Use - Summary

Fixed Property Use		Total Incidents:
962	Residential street, road or residential driveway	6
963	Street or road in commercial area	20
965	Vehicle parking area	17
973	Aircraft taxi-way	1
974	Aircraft loading area	1
983	Pipeline, power line or other utility right of way	4
UUU	Undetermined	1
<b>Grand Total:</b>		<b>307</b>

Print Date: 2/15/2013

## Incident Reports By Property Use

### 2012 Incident Reports by Fixed Property Use

#### 000 - Property Use, Other

Incident #	Exp #	Date	Time	Incident Type
2012054	0	2/29/2012	8:14:00AM	815 Severe weather or natural disaster standby
2012057	0	3/2/2012	3:08:58PM	900 Special type of incident, other
<b>Total Incidents: 2</b>				

#### 131 - Church, mosque, synagogue, temple, chapel

Incident #	Exp #	Date	Time	Incident Type
2012310	0	12/24/2012	7:24:50AM	652 Steam, vapor, fog or dust thought to be smoke
<b>Total Incidents: 1</b>				

#### 155 - Courthouse

Incident #	Exp #	Date	Time	Incident Type
2012031	0	2/8/2012	2:56:47PM	611 Dispatched & canceled en route
<b>Total Incidents: 1</b>				

#### 160 - Eating, drinking places

Incident #	Exp #	Date	Time	Incident Type
2012019	0	1/20/2012	8:52:01AM	745 Alarm system sounded, no fire - unintentional
<b>Total Incidents: 1</b>				

#### 161 - Restaurant or cafeteria

Incident #	Exp #	Date	Time	Incident Type
2012079	0	4/8/2012	2:17:45PM	112 Fires in structures other than in a building
2012080	0	4/8/2012	4:57:40PM	111 Building fire
2012136	0	6/10/2012	7:57:23AM	651 Smoke scare, odor of smoke
2012141	0	6/19/2012	1:25:58PM	162 Outside equipment fire
2012147	0	6/23/2012	9:52:00AM	150 Outside rubbish fire, other
2012263	0	11/7/2012	2:26:00PM	412 Gas leak (natural gas or LPG)
<b>Total Incidents: 6</b>				

## Incident Reports By Property Use

### 2012 Incident Reports by Fixed Property Use

#### 171 - Airport passenger terminal

Incident #	Exp #	Date	Time	Incident Type
2012017	0	1/17/2012	10:30:00AM	813 Wind storm, tornado/hurricane assessment
<b>Total Incidents: 1</b>				

#### 183 - Movie theater

Incident #	Exp #	Date	Time	Incident Type
2012152	0	6/26/2012	1:48:37AM	611 Dispatched & canceled en route
<b>Total Incidents: 1</b>				

#### 200 - Educational, other

Incident #	Exp #	Date	Time	Incident Type
2012100	0	4/24/2012	8:30:00AM	900 Special type of incident, other
2012139	0	6/18/2012	8:00:00AM	900 Special type of incident, other
<b>Total Incidents: 2</b>				

#### 213 - Elementary school, including kindergarten

Incident #	Exp #	Date	Time	Incident Type
2012026	0	1/30/2012	8:30:00AM	900 Special type of incident, other
2012255	0	10/24/2012	2:09:00PM	740 Unintentional transmission of alarm, other
2012271	0	11/15/2012	10:30:00AM	553 Public service
<b>Total Incidents: 3</b>				

#### 241 - Adult education center, college classroom

Incident #	Exp #	Date	Time	Incident Type
2012061	0	3/7/2012	7:00:13AM	900 Special type of incident, other
2012269	0	11/13/2012	2:12:35PM	900 Special type of incident, other
<b>Total Incidents: 2</b>				

## Incident Reports By Property Use

### 2012 Incident Reports by Fixed Property Use

#### 311 - 24-hour care Nursing homes, 4 or more persons

Incident #	Exp #	Date	Time	Incident Type
2012012	0	1/11/2012	7:31:00PM	700 False alarm or false call, other
2012025	0	1/26/2012	6:10:16PM	611 Dispatched & canceled en route
2012130	0	6/3/2012	6:24:31PM	700 False alarm or false call, other
2012192	0	8/6/2012	2:48:55PM	611 Dispatched & canceled en route
2012242	0	10/13/2012	4:47:48PM	730 System malfunction, other
2012311	0	12/30/2012	6:25:45AM	700 False alarm or false call, other
				<b>Total Incidents: 6</b>

#### 321 - Mental retardation/development disability facility

Incident #	Exp #	Date	Time	Incident Type
2012047	0	2/24/2012	11:20:25AM	611 Dispatched & canceled en route
2012090	0	4/18/2012	8:20:41PM	600 Good intent call, other
				<b>Total Incidents: 2</b>

#### 323 - Asylum, mental institution

Incident #	Exp #	Date	Time	Incident Type
2012060	0	3/6/2012	7:50:25PM	611 Dispatched & canceled en route
				<b>Total Incidents: 1</b>

#### 331 - Hospital - medical or psychiatric

Incident #	Exp #	Date	Time	Incident Type
2012160	0	6/29/2012	7:21:00PM	500 Service Call, other
2012204	0	8/17/2012	12:05:30AM	611 Dispatched & canceled en route
2012266	0	11/10/2012	10:57:12AM	651 Smoke scare, odor of smoke
				<b>Total Incidents: 3</b>

#### 361 - Jail, prison (not juvenile)

Incident #	Exp #	Date	Time	Incident Type
2012215	0	9/8/2012	12:50:19PM	611 Dispatched & canceled en route
				<b>Total Incidents: 1</b>

**Incident Reports By Property Use****2012 Incident Reports by Fixed Property Use****400 - Residential, other**

<b>Incident #</b>	<b>Exp #</b>	<b>Date</b>	<b>Time</b>	<b>Incident Type</b>
2012265	0	11/9/2012	5:09:45PM	651 Smoke scare, odor of smoke
2012308	0	12/21/2012	1:09:00AM	111 Building fire
				<b>Total Incidents: 2</b>

## Incident Reports By Property Use

### 2012 Incident Reports by Fixed Property Use

#### 419 - 1 or 2 family dwelling

Incident #	Exp #	Date	Time	Incident Type
2012013	0	1/13/2012	3:14:00AM	424 Carbon monoxide incident
2012020	0	1/21/2012	9:38:08PM	424 Carbon monoxide incident
2012029	0	2/4/2012	10:33:28AM	651 Smoke scare, odor of smoke
2012035	0	2/13/2012	8:23:13AM	651 Smoke scare, odor of smoke
2012036	0	2/14/2012	7:20:12PM	651 Smoke scare, odor of smoke
2012055	0	3/2/2012	11:26:24AM	736 CO detector activation due to malfunction
2012065	0	3/13/2012	4:32:10PM	424 Carbon monoxide incident
2012067	0	3/18/2012	1:40:43PM	733 Smoke detector activation due to malfunction
2012071	0	3/25/2012	2:29:57PM	651 Smoke scare, odor of smoke
2012082	0	4/9/2012	8:05:51PM	321 EMS call, excluding vehicle accident with injury
2012097	0	4/23/2012	1:42:21PM	671 Hazmat release investigation w/ no hazmat
2012103	0	4/27/2012	5:34:56PM	111 Building fire
2012104	0	4/28/2012	5:54:26AM	111 Building fire
2012106	0	4/30/2012	12:36:30AM	111 Building fire
2012109	0	5/3/2012	9:03:00AM	554 Assist invalid
2012110	0	5/4/2012	11:07:00PM	111 Building fire
2012118	0	5/17/2012	9:00:00PM	561 Unauthorized burning
2012138	0	6/18/2012	6:20:20AM	671 Hazmat release investigation w/ no hazmat
2012142	0	6/19/2012	4:57:58PM	651 Smoke scare, odor of smoke
2012144	0	6/21/2012	5:53:00PM	900 Special type of incident, other
2012173	0	7/5/2012	5:03:20PM	445 Arcing, shorted electrical equipment
2012174	0	7/6/2012	6:09:12AM	733 Smoke detector activation due to malfunction
2012177	0	7/11/2012	9:30:00PM	561 Unauthorized burning
2012181	0	7/20/2012	12:36:18PM	744 Detector activation, no fire - unintentional
2012193	0	8/8/2012	2:08:20AM	744 Detector activation, no fire - unintentional
2012203	0	8/16/2012	9:48:00AM	744 Detector activation, no fire - unintentional
2012225	0	9/26/2012	6:11:00PM	412 Gas leak (natural gas or LPG)
2012227	0	9/28/2012	7:06:03PM	733 Smoke detector activation due to malfunction
2012229	0	9/29/2012	9:14:16AM	733 Smoke detector activation due to malfunction
2012231	0	9/29/2012	8:53:26PM	744 Detector activation, no fire - unintentional
2012235	0	10/2/2012	5:00:39PM	744 Detector activation, no fire - unintentional
2012244	0	10/15/2012	9:04:20AM	621 Wrong location
2012245	0	10/15/2012	9:04:20AM	412 Gas leak (natural gas or LPG)
2012248	0	10/17/2012	10:54:00PM	600 Good intent call, other
2012249	0	10/19/2012	10:55:25AM	424 Carbon monoxide incident
2012251	0	10/22/2012	6:20:00PM	445 Arcing, shorted electrical equipment
2012275	0	11/18/2012	8:45:58AM	611 Dispatched & canceled en route
2012290	0	11/29/2012	10:17:00PM	445 Arcing, shorted electrical equipment
2012294	0	12/1/2012	9:50:13PM	111 Building fire
2012297	0	12/3/2012	7:43:58AM	744 Detector activation, no fire - unintentional
2012301	0	12/10/2012	12:57:59PM	743 Smoke detector activation, no fire - unintentional

**Total Incidents: 41**



## Incident Reports By Property Use

### 2012 Incident Reports by Fixed Property Use

#### 429 - Multifamily dwellings

Incident #	Exp #	Date	Time	Incident Type
2012006	0	1/6/2012	6:33:00PM	651 Smoke scare, odor of smoke
2012007	0	1/8/2012	4:25:45AM	500 Service Call, other
2012032	0	2/11/2012	4:01:00PM	111 Building fire
2012037	0	2/15/2012	2:43:00AM	445 Arcing, shorted electrical equipment
2012045	0	2/20/2012	8:49:38PM	651 Smoke scare, odor of smoke
2012053	0	2/28/2012	9:42:15PM	353 Removal of victim(s) from stalled elevator
2012095	0	4/23/2012	7:32:14AM	651 Smoke scare, odor of smoke
2012108	0	5/2/2012	7:36:15AM	353 Removal of victim(s) from stalled elevator
2012113	0	5/7/2012	1:13:30PM	445 Arcing, shorted electrical equipment
2012143	0	6/21/2012	9:45:54AM	745 Alarm system sounded, no fire - unintentional
2012176	0	7/11/2012	7:09:01PM	111 Building fire
2012201	0	8/15/2012	12:02:06PM	111 Building fire
2012232	0	9/30/2012	1:30:20PM	113 Cooking fire, confined to container
2012239	0	10/11/2012	2:52:00AM	651 Smoke scare, odor of smoke
2012257	0	10/25/2012	8:07:45AM	600 Good intent call, other
2012262	0	11/5/2012	7:37:45AM	611 Dispatched & canceled en route
2012268	0	11/13/2012	7:47:30AM	445 Arcing, shorted electrical equipment
2012279	0	11/22/2012	11:40:34AM	651 Smoke scare, odor of smoke
2012281	0	11/25/2012	5:44:37PM	611 Dispatched & canceled en route
2012287	0	11/28/2012	5:37:50PM	113 Cooking fire, confined to container
<b>Total Incidents: 20</b>				

#### 439 - Boarding/rooming house, residential hotels

Incident #	Exp #	Date	Time	Incident Type
2012234	0	10/2/2012	11:00:00AM	911 Citizen complaint
<b>Total Incidents: 1</b>				

#### 500 - Mercantile, business, other

Incident #	Exp #	Date	Time	Incident Type
2012074	0	3/30/2012	3:45:03PM	731 Sprinkler activation due to malfunction
2012182	0	7/21/2012	8:30:00AM	900 Special type of incident, other
2012291	0	11/30/2012	1:33:48PM	611 Dispatched & canceled en route
<b>Total Incidents: 3</b>				

#### 539 - Household goods, sales, repairs

Incident #	Exp #	Date	Time	Incident Type
2012003	0	1/4/2012	6:30:00PM	740 Unintentional transmission of alarm, other
<b>Total Incidents: 1</b>				

## Incident Reports By Property Use

### 2012 Incident Reports by Fixed Property Use

#### 559 - Recreational, hobby, home repair sales, pet store

Incident #	Exp #	Date	Time	Incident Type
2012085	0	4/11/2012	1:16:55PM	100 Fire, other
2012085	1	4/11/2012	1:16:55PM	111 Building fire
<b>Total Incidents: 2</b>				

#### 571 - Service station, gas station

Incident #	Exp #	Date	Time	Incident Type
2012051	0	2/26/2012	11:15:15AM	411 Gasoline or other flammable liquid spill
2012285	0	11/27/2012	9:58:00PM	132 Road freight or transport vehicle fire
<b>Total Incidents: 2</b>				

#### 579 - Motor vehicle or boat sales, services, repair

Incident #	Exp #	Date	Time	Incident Type
2012075	0	3/30/2012	8:56:55PM	151 Outside rubbish, trash or waste fire
<b>Total Incidents: 1</b>				

#### 581 - Department or discount store

Incident #	Exp #	Date	Time	Incident Type
2012011	0	1/10/2012	10:09:25AM	700 False alarm or false call, other
2012046	0	2/22/2012	12:36:18PM	730 System malfunction, other
2012137	0	6/13/2012	9:32:45AM	741 Sprinkler activation, no fire - unintentional
2012163	0	7/1/2012	12:58:20PM	111 Building fire
<b>Total Incidents: 4</b>				

#### 599 - Business office

Incident #	Exp #	Date	Time	Incident Type
2012002	0	1/3/2012	12:24:30PM	651 Smoke scare, odor of smoke
2012066	0	3/14/2012	8:59:38PM	740 Unintentional transmission of alarm, other
2012096	0	4/23/2012	11:51:47AM	671 Hazmat release investigation w/ no hazmat
2012103	2	4/27/2012	5:34:56PM	111 Building fire
2012159	0	6/29/2012	6:45:35PM	740 Unintentional transmission of alarm, other
2012258	0	10/26/2012	9:00:00AM	900 Special type of incident, other
2012267	0	11/10/2012	11:02:15AM	353 Removal of victim(s) from stalled elevator
2012270	0	11/15/2012	9:00:00AM	900 Special type of incident, other
<b>Total Incidents: 8</b>				

## Incident Reports By Property Use

### 2012 Incident Reports by Fixed Property Use

#### 615 - Electric generating plant

Incident #	Exp #	Date	Time	Incident Type
2012008	0	1/9/2012	6:37:00AM	900 Special type of incident, other
2012247	0	10/16/2012	5:30:00PM	900 Special type of incident, other
				<b>Total Incidents: 2</b>

#### 640 - Utility or Distribution system, other

Incident #	Exp #	Date	Time	Incident Type
2012169	0	7/2/2012	1:06:39PM	445 Arcing, shorted electrical equipment
				<b>Total Incidents: 1</b>

#### 642 - Electrical distribution

Incident #	Exp #	Date	Time	Incident Type
2012021	0	1/23/2012	11:24:09AM	440 Electrical wiring/equipment problem, other
2012156	0	6/29/2012	5:25:01PM	445 Arcing, shorted electrical equipment
2012157	0	6/29/2012	5:42:00PM	444 Power line down
2012158	0	6/29/2012	5:43:00PM	445 Arcing, shorted electrical equipment
2012162	0	7/1/2012	3:34:00AM	445 Arcing, shorted electrical equipment
2012165	0	7/1/2012	6:49:23PM	445 Arcing, shorted electrical equipment
2012166	0	7/1/2012	7:01:00PM	445 Arcing, shorted electrical equipment
2012168	0	7/2/2012	10:52:51AM	444 Power line down
2012185	0	7/27/2012	7:52:30PM	445 Arcing, shorted electrical equipment
				<b>Total Incidents: 9</b>

#### 700 - Manufacturing, processing

Incident #	Exp #	Date	Time	Incident Type
2012001	0	1/3/2012	12:37:00AM	730 System malfunction, other
2012009	0	1/12/2012	9:17:01AM	735 Alarm system sounded due to malfunction
2012170	0	7/2/2012	1:40:00PM	911 Citizen complaint
2012186	0	7/28/2012	12:02:02AM	745 Alarm system sounded, no fire - unintentional
2012191	0	8/1/2012	12:31:00PM	611 Dispatched & canceled en route
2012226	0	9/27/2012	2:03:00AM	741 Sprinkler activation, no fire - unintentional
				<b>Total Incidents: 6</b>

## Incident Reports By Property Use

### 2012 Incident Reports by Fixed Property Use

#### 800 - Storage, other

Incident #	Exp #	Date	Time	Incident Type
2012103	1	4/27/2012	5:34:56PM	111 Building fire
2012295	0	12/2/2012	10:58:47AM	745 Alarm system sounded, no fire - unintentional
				<b>Total Incidents: 2</b>

#### 807 - Outside material storage area

Incident #	Exp #	Date	Time	Incident Type
2012073	0	3/29/2012	10:19:00PM	161 Outside storage fire
				<b>Total Incidents: 1</b>

#### 808 - Outbuilding or shed

Incident #	Exp #	Date	Time	Incident Type
2012292	0	12/1/2012	6:31:00AM	900 Special type of incident, other
				<b>Total Incidents: 1</b>

#### 816 - Grain elevator, silo

Incident #	Exp #	Date	Time	Incident Type
2012091	0	4/19/2012	11:00:00AM	900 Special type of incident, other
				<b>Total Incidents: 1</b>

#### 881 - Parking garage, (detached residential garage)

Incident #	Exp #	Date	Time	Incident Type
2012167	1	7/2/2012	7:35:21AM	111 Building fire
				<b>Total Incidents: 1</b>

## Incident Reports By Property Use

## 2012 Incident Reports by Fixed Property Use

## 888 - Fire station

Incident #	Exp #	Date	Time	Incident Type
2011218	0	12/5/2011	7:00:00PM	900 Special type of incident, other
2011230	0	12/19/2011	7:00:00PM	900 Special type of incident, other
2012004	0	1/5/2012	7:00:00PM	900 Special type of incident, other
2012010	0	1/9/2012	7:15:00PM	900 Special type of incident, other
2012016	0	1/16/2012	7:00:00PM	900 Special type of incident, other
2012022	0	1/23/2012	6:30:00PM	900 Special type of incident, other
2012023	0	1/23/2012	6:30:00PM	900 Special type of incident, other
2012024	0	1/23/2012	6:00:00PM	900 Special type of incident, other
2012027	0	2/2/2012	7:30:00PM	900 Special type of incident, other
2012028	0	2/4/2012	8:00:00AM	900 Special type of incident, other
2012030	0	2/7/2012	6:00:00PM	900 Special type of incident, other
2012033	0	2/11/2012	9:12:00PM	553 Public service
2012034	0	2/12/2012	11:00:00AM	900 Special type of incident, other
2012038	0	2/15/2012	6:00:00PM	900 Special type of incident, other
2012039	0	2/16/2012	10:00:00AM	900 Special type of incident, other
2012044	0	2/23/2012	6:44:00PM	900 Special type of incident, other
2012052	0	2/27/2012	6:30:00PM	900 Special type of incident, other
2012056	0	3/2/2012	12:00:00PM	815 Severe weather or natural disaster standby
2012059	0	3/5/2012	7:15:00PM	900 Special type of incident, other
2012062	0	3/9/2012	2:00:00PM	900 Special type of incident, other
2012069	0	3/20/2012	4:30:00PM	900 Special type of incident, other
2012076	0	3/31/2012	11:58:00AM	900 Special type of incident, other
2012077	0	4/5/2012	7:25:00PM	900 Special type of incident, other
2012078	0	4/6/2012	7:30:00AM	900 Special type of incident, other
2012087	0	4/15/2012	9:00:00AM	900 Special type of incident, other
2012089	0	4/18/2012	6:00:00PM	900 Special type of incident, other
2012098	0	4/23/2012	6:00:00PM	900 Special type of incident, other
2012101	0	4/24/2012	7:00:00PM	900 Special type of incident, other
2012102	0	4/26/2012	6:00:00PM	900 Special type of incident, other
2012107	0	5/1/2012	6:00:00PM	900 Special type of incident, other
2012111	0	5/5/2012	8:00:00AM	900 Special type of incident, other
2012115	0	5/10/2012	5:00:00PM	900 Special type of incident, other
2012117	0	5/16/2012	6:00:00PM	900 Special type of incident, other
2012125	0	5/26/2012	11:00:00AM	553 Public service
2012127	0	5/28/2012	6:00:00PM	900 Special type of incident, other
2012132	0	6/6/2012	6:00:00PM	900 Special type of incident, other
2012140	0	6/18/2012	7:28:00PM	900 Special type of incident, other
2012151	0	6/25/2012	6:30:00PM	900 Special type of incident, other
2012154	0	6/27/2012	6:00:00PM	900 Special type of incident, other
2012155	0	6/28/2012	9:00:00AM	900 Special type of incident, other
2012171	0	7/2/2012	7:30:00PM	900 Special type of incident, other
2012180	0	7/18/2012	6:00:00PM	900 Special type of incident, other
2012183	0	7/24/2012	6:30:00AM	900 Special type of incident, other
2012184	0	7/24/2012	6:00:00PM	900 Special type of incident, other
2012187	0	7/28/2012	9:00:00AM	900 Special type of incident, other
2012189	0	7/30/2012	5:45:00PM	900 Special type of incident, other
2012202	0	8/15/2012	6:00:00PM	900 Special type of incident, other

## Incident Reports By Property Use

### 2012 Incident Reports by Fixed Property Use

2012205	0	8/20/2012	7:00:00PM	900	Special type of incident, other
2012206	0	8/22/2012	6:00:00PM	900	Special type of incident, other
2012207	0	8/25/2012	8:00:00AM	900	Special type of incident, other
2012209	0	8/27/2012	7:30:00PM	900	Special type of incident, other
2012216	0	9/10/2012	6:00:00PM	900	Special type of incident, other
2012218	0	9/16/2012	12:00:00AM	900	Special type of incident, other
2012219	0	9/17/2012	6:00:00PM	900	Special type of incident, other
2012220	0	9/19/2012	6:00:00PM	900	Special type of incident, other
2012222	0	9/24/2012	6:00:00PM	900	Special type of incident, other
2012230	0	9/29/2012	11:00:00AM	553	Public service
2012273	0	11/12/2012	6:00:00PM	900	Special type of incident, other
2012274	0	11/12/2012	7:00:00PM	900	Special type of incident, other
2012277	0	11/19/2012	7:30:00PM	900	Special type of incident, other
2012278	0	11/19/2012	7:45:00PM	900	Special type of incident, other
2012280	0	11/24/2012	11:30:00AM	900	Special type of incident, other
2012282	0	11/26/2012	6:45:00PM	900	Special type of incident, other
2012283	0	11/26/2012	7:00:00PM	900	Special type of incident, other
2012296	0	12/2/2012	3:30:00PM	900	Special type of incident, other
2012298	0	12/6/2012	7:00:00PM	900	Special type of incident, other
2012299	0	12/8/2012	8:00:00AM	900	Special type of incident, other
2012300	0	12/9/2012	12:00:00PM	900	Special type of incident, other
2012302	0	12/15/2012	12:00:00PM	900	Special type of incident, other
2012303	0	12/16/2012	12:00:00PM	900	Special type of incident, other
2012305	0	12/16/2012	8:00:00AM	900	Special type of incident, other
2012306	0	12/17/2012	8:30:00AM	900	Special type of incident, other
<b>Total Incidents: 72</b>					

### 900 - Outside or special property, other

Incident #	Exp #	Date	Time	Incident Type
2012149	0	6/24/2012	11:10:35PM	154 Dumpster or other outside trash receptacle fire
2012150	0	6/24/2012	11:30:25PM	154 Dumpster or other outside trash receptacle fire
<b>Total Incidents: 2</b>				

### 926 - Outbuilding, protective shelter

Incident #	Exp #	Date	Time	Incident Type
2012198	0	8/11/2012	1:48:32PM	730 System malfunction, other
<b>Total Incidents: 1</b>				

## Incident Reports By Property Use

### 2012 Incident Reports by Fixed Property Use

#### 931 - Open land or field

Incident #	Exp #	Date	Time	Incident Type
2012068	0	3/19/2012	1:21:08PM	142 Brush, or brush and grass mixture fire
2012093	0	4/20/2012	6:30:12PM	561 Unauthorized burning
2012094	0	4/21/2012	7:17:47PM	356 High angle rescue
2012195	0	8/8/2012	1:43:21PM	142 Brush, or brush and grass mixture fire
2012284	0	11/26/2012	11:13:29PM	142 Brush, or brush and grass mixture fire
2012289	0	11/29/2012	1:18:18PM	142 Brush, or brush and grass mixture fire
2012293	0	12/1/2012	10:16:00AM	100 Fire, other
				<b>Total Incidents: 7</b>

#### 938 - Graded and cared-for plots of land

Incident #	Exp #	Date	Time	Incident Type
2012042	0	2/20/2012	9:30:00AM	553 Public service
2012058	0	3/2/2012	3:41:28PM	813 Wind storm, tornado/hurricane assessment
2012088	0	4/17/2012	11:11:13PM	561 Unauthorized burning
2012092	0	4/25/2012	3:10:00PM	561 Unauthorized burning
2012114	0	5/10/2012	1:12:00AM	112 Fires in structures other than in a building
2012116	0	5/15/2012	2:12:00PM	551 Assist police or other governmental agency
2012120	0	5/19/2012	3:57:30PM	160 Special outside fire, other
2012122	0	5/19/2012	9:09:29PM	631 Authorized controlled burning
2012123	0	5/22/2012	7:08:09PM	311 Medical assist, assist EMS crew
2012135	0	6/9/2012	5:18:00PM	900 Special type of incident, other
2012153	0	6/27/2012	8:02:23AM	170 Cultivated vegetation, crop fire, other
2012161	0	6/30/2012	11:45:50PM	651 Smoke scare, odor of smoke
2012190	0	7/31/2012	8:01:00PM	151 Outside rubbish, trash or waste fire
2012199	0	8/12/2012	4:27:27PM	143 Grass fire
2012211	0	9/1/2012	10:07:50PM	154 Dumpster or other outside trash receptacle fire
2012212	0	9/5/2012	10:13:00AM	561 Unauthorized burning
2012213	0	9/6/2012	12:27:45PM	412 Gas leak (natural gas or LPG)
2012254	0	10/23/2012	8:07:58PM	561 Unauthorized burning
2012260	0	11/1/2012	8:42:29AM	140 Natural vegetation fire, other
				<b>Total Incidents: 19</b>

#### 946 - Lake, river, stream

Incident #	Exp #	Date	Time	Incident Type
2012221	0	9/22/2012	7:00:00AM	900 Special type of incident, other
				<b>Total Incidents: 1</b>

## Incident Reports By Property Use

### 2012 Incident Reports by Fixed Property Use

#### 960 - Street, other

Incident #	Exp #	Date	Time	Incident Type
2012041	0	2/18/2012	9:40:00PM	553 Public service
2012188	0	7/28/2012	12:00:00PM	
				<b>Total Incidents: 2</b>

#### 961 - Highway or divided highway

Incident #	Exp #	Date	Time	Incident Type
2012050	0	2/25/2012	6:22:10PM	352 Extrication of victim(s) from vehicle
2012081	0	4/9/2012	1:29:30PM	143 Grass fire
2012083	0	4/10/2012	12:50:03AM	352 Extrication of victim(s) from vehicle
2012128	0	5/31/2012	10:45:14AM	611 Dispatched & canceled en route
2012194	0	8/8/2012	1:14:12PM	131 Passenger vehicle fire
2012208	0	8/26/2012	10:33:30AM	131 Passenger vehicle fire
2012214	0	9/7/2012	4:41:00PM	352 Extrication of victim(s) from vehicle
2012228	0	9/29/2012	6:13:48AM	352 Extrication of victim(s) from vehicle
2012238	0	10/8/2012	9:26:48AM	352 Extrication of victim(s) from vehicle
2012276	0	11/28/2012	1:34:00PM	131 Passenger vehicle fire
2012307	0	12/18/2012	12:11:30AM	352 Extrication of victim(s) from vehicle
				<b>Total Incidents: 11</b>

#### 962 - Residential street, road or residential driveway

Incident #	Exp #	Date	Time	Incident Type
2012014	0	1/15/2012	2:25:00AM	231 Chemical reaction rupture of process vessel
2012070	0	3/22/2012	10:31:52AM	413 Oil or other combustible liquid spill
2012224	0	9/26/2012	1:45:12PM	611 Dispatched & canceled en route
2012233	0	10/1/2012	4:07:00PM	352 Extrication of victim(s) from vehicle
2012236	0	10/3/2012	5:39:00AM	352 Extrication of victim(s) from vehicle
2012250	0	10/20/2012	7:00:00AM	900 Special type of incident, other
				<b>Total Incidents: 6</b>



## Incident Reports By Property Use

### 2012 Incident Reports by Fixed Property Use

#### 963 - Street or road in commercial area

Incident #	Exp #	Date	Time	Incident Type
2012015	0	1/16/2012	6:12:00PM	352 Extrication of victim(s) from vehicle
2012040	0	2/18/2012	10:00:00AM	900 Special type of incident, other
2012064	0	3/10/2012	7:04:24PM	352 Extrication of victim(s) from vehicle
2012072	0	3/26/2012	7:00:00PM	900 Special type of incident, other
2012099	0	4/23/2012	7:58:00PM	900 Special type of incident, other
2012119	0	5/19/2012	7:45:00AM	900 Special type of incident, other
2012124	0	5/26/2012	4:00:00AM	132 Road freight or transport vehicle fire
2012126	0	5/28/2012	1:00:00PM	900 Special type of incident, other
2012129	0	6/2/2012	9:00:00AM	900 Special type of incident, other
2012172	0	7/4/2012	5:30:00PM	553 Public service
2012175	0	7/6/2012	6:00:00PM	553 Public service
2012178	0	7/15/2012	10:46:00AM	
2012196	0	8/10/2012	5:00:00PM	553 Public service
2012197	0	8/11/2012	12:30:00PM	553 Public service
2012200	0	8/12/2012	5:00:00PM	553 Public service
2012210	0	9/1/2012	8:30:00AM	900 Special type of incident, other
2012217	0	9/10/2012	7:04:00PM	900 Special type of incident, other
2012223	0	9/24/2012	6:00:00PM	900 Special type of incident, other
2012261	0	11/3/2012	2:58:00AM	100 Fire, other
2012264	0	11/9/2012	4:56:32PM	671 Hazmat release investigation w/ no hazmat
				<b>Total Incidents: 20</b>

#### 965 - Vehicle parking area

Incident #	Exp #	Date	Time	Incident Type
2012043	0	2/20/2012	2:13:00PM	413 Oil or other combustible liquid spill
2012048	0	2/24/2012	5:15:50PM	131 Passenger vehicle fire
2012049	0	2/25/2012	7:50:19AM	131 Passenger vehicle fire
2012063	0	3/10/2012	2:20:15PM	671 Hazmat release investigation w/ no hazmat
2012084	0	4/10/2012	9:36:25AM	652 Steam, vapor, fog or dust thought to be smoke
2012086	1	4/13/2012	12:44:26PM	131 Passenger vehicle fire
2012086	2	4/13/2012	12:44:26PM	131 Passenger vehicle fire
2012086	0	4/13/2012	12:44:26PM	131 Passenger vehicle fire
2012121	0	5/19/2012	8:40:50PM	131 Passenger vehicle fire
2012131	0	6/6/2012	5:05:00AM	600 Good intent call, other
2012145	0	6/22/2012	6:42:56PM	311 Medical assist, assist EMS crew
2012146	0	6/22/2012	6:53:18PM	131 Passenger vehicle fire
2012167	0	7/2/2012	7:35:21AM	131 Passenger vehicle fire
2012179	0	7/16/2012	12:56:11PM	411 Gasoline or other flammable liquid spill
2012259	0	10/29/2012	12:11:22AM	132 Road freight or transport vehicle fire
2012304	0	12/16/2012	3:30:00PM	900 Special type of incident, other
2012309	0	12/22/2012	10:01:30PM	410 Flammable gas or liquid condition, other
				<b>Total Incidents: 17</b>

## Incident Reports By Property Use

### 2012 Incident Reports by Fixed Property Use

#### 973 - Aircraft taxi-way

Incident #	Exp #	Date	Time	Incident Type
2012237	0	10/6/2012	10:41:15AM	553 Public service
<b>Total Incidents: 1</b>				

#### 974 - Aircraft loading area

Incident #	Exp #	Date	Time	Incident Type
2012005	0	1/6/2012	7:00:00AM	
<b>Total Incidents: 1</b>				

#### 983 - Pipeline, power line or other utility right of way

Incident #	Exp #	Date	Time	Incident Type
2012112	0	5/5/2012	3:10:03PM	100 Fire, other
2012133	0	6/8/2012	10:36:17AM	445 Arcing, shorted electrical equipment
2012164	0	7/1/2012	6:49:23PM	445 Arcing, shorted electrical equipment
2012272	0	11/16/2012	12:49:00PM	445 Arcing, shorted electrical equipment
<b>Total Incidents: 4</b>				

#### UUU - Undetermined

Incident #	Exp #	Date	Time	Incident Type
2012000	0	7/10/2012	12:00:00AM	
<b>Total Incidents: 1</b>				

**Grand Total: 307**

Print Date: 2/15/2013

## **MFD DISTRICTS**

**District 1** – That part of the City lying in the Ohio River Valley (Downtown).

**District 2** – That part of the City lying on the hills above the Downtown area (Hilltop, including the old town of “North Madison”).

### **Fire Company Home Districts (Ordinance § 32.15)**

#### **1-0** – All of the Downtown

**1-1** – All that part of the City lying east of Mulberry Street and South of Fifth Street.

**1-2** – All that part of the City lying between Mulberry and Vine Streets.

**1-3** – All that part of the City lying west of Vine Street.

**1-4** – All that part of the City lying north of Fifth Street and east of Mulberry Street.

#### **2-0** – All of the Hilltop

**2-5** – All that part of the City on top of the hill lying west of the Madison Port Authority Railroad tracks.

**2-6** – All that part of the City on top of the hill lying east of the Madison Port Authority Railroad tracks.

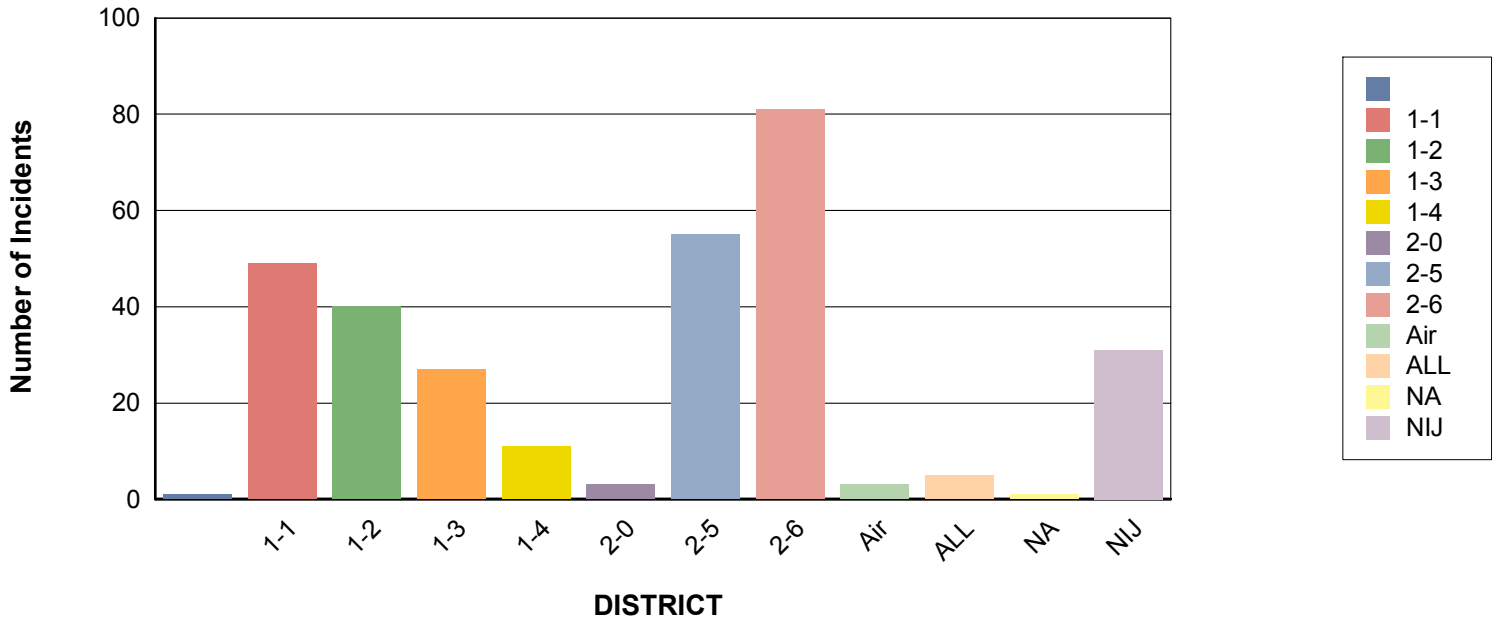
### **Special Districts**

**Airport** – Madison Municipal Airport

**All** – A combination of all the above referenced Districts

**NJ** – Not in Jurisdiction

## Number of Incidents by District



### Incident Reports By District

### 2012 Incident Reports by District - Graph and Text (rev)

**District:** Unknown or Undetermined.

Incident #	Exp #	Date	Time	Type
2012000	0	7/10/2012	12:00:00AM	

**Total For This District: 1**

## 2012 Incident Reports by District - Graph and Text (rev)

District: 1-1

Incident #	Exp #	Date	Time	Type
2011218	0	12/5/2011	7:00:00PM	900 Special type of incident, other
2011230	0	12/19/2011	7:00:00PM	900 Special type of incident, other
2012016	0	1/16/2012	7:00:00PM	900 Special type of incident, other
2012020	0	1/21/2012	9:38:08PM	424 Carbon monoxide incident
2012021	0	1/23/2012	11:24:09AM	440 Electrical wiring/equipment problem, other
2012027	0	2/2/2012	7:30:00PM	900 Special type of incident, other
2012028	0	2/4/2012	8:00:00AM	900 Special type of incident, other
2012030	0	2/7/2012	6:00:00PM	900 Special type of incident, other
2012031	0	2/8/2012	2:56:47PM	611 Dispatched & canceled en route
2012034	0	2/12/2012	11:00:00AM	900 Special type of incident, other
2012037	0	2/15/2012	2:43:00AM	445 Arcing, shorted electrical equipment
2012044	0	2/23/2012	6:44:00PM	900 Special type of incident, other
2012059	0	3/5/2012	7:15:00PM	900 Special type of incident, other
2012062	0	3/9/2012	2:00:00PM	900 Special type of incident, other
2012077	0	4/5/2012	7:25:00PM	900 Special type of incident, other
2012078	0	4/6/2012	7:30:00AM	900 Special type of incident, other
2012089	0	4/18/2012	6:00:00PM	900 Special type of incident, other
2012096	0	4/23/2012	11:51:47AM	671 Hazmat release investigation w/ no hazmat
2012102	0	4/26/2012	6:00:00PM	900 Special type of incident, other
2012107	0	5/1/2012	6:00:00PM	900 Special type of incident, other
2012111	0	5/5/2012	8:00:00AM	900 Special type of incident, other
2012115	0	5/10/2012	5:00:00PM	900 Special type of incident, other
2012125	0	5/26/2012	11:00:00AM	553 Public service
2012132	0	6/6/2012	6:00:00PM	900 Special type of incident, other
2012136	0	6/10/2012	7:57:23AM	651 Smoke scare, odor of smoke
2012138	0	6/18/2012	6:20:20AM	671 Hazmat release investigation w/ no hazmat
2012140	0	6/18/2012	7:28:00PM	900 Special type of incident, other
2012156	0	6/29/2012	5:25:01PM	445 Arcing, shorted electrical equipment
2012159	0	6/29/2012	6:45:35PM	740 Unintentional transmission of alarm, other
2012164	0	7/1/2012	6:49:23PM	445 Arcing, shorted electrical equipment
2012171	0	7/2/2012	7:30:00PM	900 Special type of incident, other
2012172	0	7/4/2012	5:30:00PM	553 Public service
2012175	0	7/6/2012	6:00:00PM	553 Public service
2012205	0	8/20/2012	7:00:00PM	900 Special type of incident, other
2012210	0	9/1/2012	8:30:00AM	900 Special type of incident, other
2012215	0	9/8/2012	12:50:19PM	611 Dispatched & canceled en route
2012230	0	9/29/2012	11:00:00AM	553 Public service
2012231	0	9/29/2012	8:53:26PM	744 Detector activation, no fire - unintentional
2012234	0	10/2/2012	11:00:00AM	911 Citizen complaint
2012244	0	10/15/2012	9:04:20AM	621 Wrong location
2012267	0	11/10/2012	11:02:15AM	353 Removal of victim(s) from stalled elevator
2012278	0	11/19/2012	7:45:00PM	900 Special type of incident, other
2012283	0	11/26/2012	7:00:00PM	900 Special type of incident, other
2012289	0	11/29/2012	1:18:18PM	142 Brush, or brush and grass mixture fire
2012293	0	12/1/2012	10:16:00AM	100 Fire, other
2012298	0	12/6/2012	7:00:00PM	900 Special type of incident, other
2012302	0	12/15/2012	12:00:00PM	900 Special type of incident, other
2012306	0	12/17/2012	8:30:00AM	900 Special type of incident, other
2012308	0	12/21/2012	1:09:00AM	111 Building fire

Total For This District: 49

## 2012 Incident Reports by District - Graph and Text (rev)

District: 1-2

Incident #	Exp #	Date	Time	Type
2012006	0	1/6/2012	6:33:00PM	651 Smoke scare, odor of smoke
2012007	0	1/8/2012	4:25:45AM	500 Service Call, other
2012045	0	2/20/2012	8:49:38PM	651 Smoke scare, odor of smoke
2012053	0	2/28/2012	9:42:15PM	353 Removal of victim(s) from stalled elevator
2012067	0	3/18/2012	1:40:43PM	733 Smoke detector activation due to malfunction
2012070	0	3/22/2012	10:31:52AM	413 Oil or other combustible liquid spill
2012073	0	3/29/2012	10:19:00PM	161 Outside storage fire
2012087	0	4/15/2012	9:00:00AM	900 Special type of incident, other
2012095	0	4/23/2012	7:32:14AM	651 Smoke scare, odor of smoke
2012103	0	4/27/2012	5:34:56PM	111 Building fire
2012103	1	4/27/2012	5:34:56PM	111 Building fire
2012103	2	4/27/2012	5:34:56PM	111 Building fire
2012104	0	4/28/2012	5:54:26AM	111 Building fire
2012108	0	5/2/2012	7:36:15AM	353 Removal of victim(s) from stalled elevator
2012112	0	5/5/2012	3:10:03PM	100 Fire, other
2012117	0	5/16/2012	6:00:00PM	900 Special type of incident, other
2012119	0	5/19/2012	7:45:00AM	900 Special type of incident, other
2012126	0	5/28/2012	1:00:00PM	900 Special type of incident, other
2012143	0	6/21/2012	9:45:54AM	745 Alarm system sounded, no fire - unintentional
2012160	0	6/29/2012	7:21:00PM	500 Service Call, other
2012174	0	7/6/2012	6:09:12AM	733 Smoke detector activation due to malfunction
2012196	0	8/10/2012	5:00:00PM	553 Public service
2012197	0	8/11/2012	12:30:00PM	553 Public service
2012200	0	8/12/2012	5:00:00PM	553 Public service
2012204	0	8/17/2012	12:05:30AM	611 Dispatched & canceled en route
2012207	0	8/25/2012	8:00:00AM	900 Special type of incident, other
2012211	0	9/1/2012	10:07:50PM	154 Dumpster or other outside trash receptacle fire
2012217	0	9/10/2012	7:04:00PM	900 Special type of incident, other
2012221	0	9/22/2012	7:00:00AM	900 Special type of incident, other
2012225	0	9/26/2012	6:11:00PM	412 Gas leak (natural gas or LPG)
2012261	0	11/3/2012	2:58:00AM	100 Fire, other
2012263	0	11/7/2012	2:26:00PM	412 Gas leak (natural gas or LPG)
2012264	0	11/9/2012	4:56:32PM	671 Hazmat release investigation w/ no hazmat
2012266	0	11/10/2012	10:57:12AM	651 Smoke scare, odor of smoke
2012268	0	11/13/2012	7:47:30AM	445 Arcing, shorted electrical equipment
2012279	0	11/22/2012	11:40:34AM	651 Smoke scare, odor of smoke
2012281	0	11/25/2012	5:44:37PM	611 Dispatched & canceled en route
2012287	0	11/28/2012	5:37:50PM	113 Cooking fire, confined to container
2012301	0	12/10/2012	12:57:59PM	743 Smoke detector activation, no fire - unintentional
2012310	0	12/24/2012	7:24:50AM	652 Steam, vapor, fog or dust thought to be smoke

Total For This District: 40

## 2012 Incident Reports by District - Graph and Text (rev)

District: 1-3

Incident #	Exp #	Date	Time	Type
2012008	0	1/9/2012	6:37:00AM	900 Special type of incident, other
2012019	0	1/20/2012	8:52:01AM	745 Alarm system sounded, no fire - unintentional
2012049	0	2/25/2012	7:50:19AM	131 Passenger vehicle fire
2012072	0	3/26/2012	7:00:00PM	900 Special type of incident, other
2012085	0	4/11/2012	1:16:55PM	100 Fire, other
2012085	1	4/11/2012	1:16:55PM	111 Building fire
2012091	0	4/19/2012	11:00:00AM	900 Special type of incident, other
2012097	0	4/23/2012	1:42:21PM	671 Hazmat release investigation w/ no hazmat
2012098	0	4/23/2012	6:00:00PM	900 Special type of incident, other
2012110	0	5/4/2012	11:07:00PM	111 Building fire
2012120	0	5/19/2012	3:57:30PM	160 Special outside fire, other
2012124	0	5/26/2012	4:00:00AM	132 Road freight or transport vehicle fire
2012158	0	6/29/2012	5:43:00PM	445 Arcing, shorted electrical equipment
2012173	0	7/5/2012	5:03:20PM	445 Arcing, shorted electrical equipment
2012183	0	7/24/2012	6:30:00AM	900 Special type of incident, other
2012190	0	7/31/2012	8:01:00PM	151 Outside rubbish, trash or waste fire
2012199	0	8/12/2012	4:27:27PM	143 Grass fire
2012223	0	9/24/2012	6:00:00PM	900 Special type of incident, other
2012247	0	10/16/2012	5:30:00PM	900 Special type of incident, other
2012249	0	10/19/2012	10:55:25AM	424 Carbon monoxide incident
2012251	0	10/22/2012	6:20:00PM	445 Arcing, shorted electrical equipment
2012255	0	10/24/2012	2:09:00PM	740 Unintentional transmission of alarm, other
2012260	0	11/1/2012	8:42:29AM	140 Natural vegetation fire, other
2012265	0	11/9/2012	5:09:45PM	651 Smoke scare, odor of smoke
2012273	0	11/12/2012	6:00:00PM	900 Special type of incident, other
2012274	0	11/12/2012	7:00:00PM	900 Special type of incident, other
2012305	0	12/16/2012	8:00:00AM	900 Special type of incident, other

Total For This District: 27

District: 1-4

Incident #	Exp #	Date	Time	Type
2012032	0	2/11/2012	4:01:00PM	111 Building fire
2012118	0	5/17/2012	9:00:00PM	561 Unauthorized burning
2012142	0	6/19/2012	4:57:58PM	651 Smoke scare, odor of smoke
2012167	0	7/2/2012	7:35:21AM	131 Passenger vehicle fire
2012167	1	7/2/2012	7:35:21AM	111 Building fire
2012176	0	7/11/2012	7:09:01PM	111 Building fire
2012177	0	7/11/2012	9:30:00PM	561 Unauthorized burning
2012208	0	8/26/2012	10:33:30AM	131 Passenger vehicle fire
2012245	0	10/15/2012	9:04:20AM	412 Gas leak (natural gas or LPG)
2012248	0	10/17/2012	10:54:00PM	600 Good intent call, other
2012294	0	12/1/2012	9:50:13PM	111 Building fire

Total For This District: 11

2012 Incident Reports by District - Graph and Text (rev)

District: 2-0

Incident #	Exp #	Date	Time	Type
2012178	0	7/15/2012	10:46:00AM	
2012188	0	7/28/2012	12:00:00PM	
2012250	0	10/20/2012	7:00:00AM	900 Special type of incident, other
				<b>Total For This District: 3</b>



## 2012 Incident Reports by District - Graph and Text (rev)

District: 2-5

Incident #	Exp #	Date	Time	Type
2012001	0	1/3/2012	12:37:00AM	730 System malfunction, other
2012002	0	1/3/2012	12:24:30PM	651 Smoke scare, odor of smoke
2012009	0	1/12/2012	9:17:01AM	735 Alarm system sounded due to malfunction
2012012	0	1/11/2012	7:31:00PM	700 False alarm or false call, other
2012024	0	1/23/2012	6:00:00PM	
2012025	0	1/26/2012	6:10:16PM	611 Dispatched & canceled en route
2012047	0	2/24/2012	11:20:25AM	611 Dispatched & canceled en route
2012060	0	3/6/2012	7:50:25PM	611 Dispatched & canceled en route
2012066	0	3/14/2012	8:59:38PM	740 Unintentional transmission of alarm, other
2012069	0	3/20/2012	4:30:00PM	900 Special type of incident, other
2012076	0	3/31/2012	11:58:00AM	900 Special type of incident, other
2012088	0	4/17/2012	11:11:13PM	561 Unauthorized burning
2012090	0	4/18/2012	8:20:41PM	600 Good intent call, other
2012123	0	5/22/2012	7:08:09PM	311 Medical assist, assist EMS crew
2012130	0	6/3/2012	6:24:31PM	700 False alarm or false call, other
2012131	0	6/6/2012	5:05:00AM	600 Good intent call, other
2012135	0	6/9/2012	5:18:00PM	900 Special type of incident, other
2012154	0	6/27/2012	6:00:00PM	900 Special type of incident, other
2012155	0	6/28/2012	9:00:00AM	900 Special type of incident, other
2012157	0	6/29/2012	5:42:00PM	444 Power line down
2012162	0	7/1/2012	3:34:00AM	445 Arcing, shorted electrical equipment
2012165	0	7/1/2012	6:49:23PM	445 Arcing, shorted electrical equipment
2012166	0	7/1/2012	7:01:00PM	445 Arcing, shorted electrical equipment
2012168	0	7/2/2012	10:52:51AM	444 Power line down
2012179	0	7/16/2012	12:56:11PM	411 Gasoline or other flammable liquid spill
2012180	0	7/18/2012	6:00:00PM	900 Special type of incident, other
2012182	0	7/21/2012	8:30:00AM	900 Special type of incident, other
2012184	0	7/24/2012	6:00:00PM	900 Special type of incident, other
2012185	0	7/27/2012	7:52:30PM	445 Arcing, shorted electrical equipment
2012189	0	7/30/2012	5:45:00PM	900 Special type of incident, other
2012192	0	8/6/2012	2:48:55PM	611 Dispatched & canceled en route
2012193	0	8/8/2012	2:08:20AM	744 Detector activation, no fire - unintentional
2012201	0	8/15/2012	12:02:06PM	111 Building fire
2012202	0	8/15/2012	6:00:00PM	900 Special type of incident, other
2012203	0	8/16/2012	9:48:00AM	744 Detector activation, no fire - unintentional
2012206	0	8/22/2012	6:00:00PM	900 Special type of incident, other
2012212	0	9/5/2012	10:13:00AM	561 Unauthorized burning
2012218	0	9/16/2012	12:00:00AM	900 Special type of incident, other
2012219	0	9/17/2012	6:00:00PM	900 Special type of incident, other
2012220	0	9/19/2012	6:00:00PM	900 Special type of incident, other
2012226	0	9/27/2012	2:03:00AM	741 Sprinkler activation, no fire - unintentional
2012235	0	10/2/2012	5:00:39PM	744 Detector activation, no fire - unintentional
2012242	0	10/13/2012	4:47:48PM	730 System malfunction, other
2012254	0	10/23/2012	8:07:58PM	561 Unauthorized burning
2012259	0	10/29/2012	12:11:22AM	132 Road freight or transport vehicle fire
2012270	0	11/15/2012	9:00:00AM	900 Special type of incident, other
2012277	0	11/19/2012	7:30:00PM	900 Special type of incident, other
2012280	0	11/24/2012	11:30:00AM	900 Special type of incident, other
2012295	0	12/2/2012	10:58:47AM	745 Alarm system sounded, no fire - unintentional
2012296	0	12/2/2012	3:30:00PM	900 Special type of incident, other

2012 Incident Reports by District - Graph and Text (rev)

2012299	0	12/8/2012	8:00:00AM	900	Special type of incident, other
2012300	0	12/9/2012	12:00:00PM	900	Special type of incident, other
2012303	0	12/16/2012	12:00:00PM	900	Special type of incident, other
2012309	0	12/22/2012	10:01:30PM	410	Flammable gas or liquid condition, other
2012311	0	12/30/2012	6:25:45AM	700	False alarm or false call, other
					<b>Total For This District: 55</b>

## 2012 Incident Reports by District - Graph and Text (rev)

District: 2-6

Incident #	Exp #	Date	Time	Type
2012003	0	1/4/2012	6:30:00PM	740 Unintentional transmission of alarm, other
2012004	0	1/5/2012	7:00:00PM	900 Special type of incident, other
2012010	0	1/9/2012	7:15:00PM	900 Special type of incident, other
2012011	0	1/10/2012	10:09:25AM	700 False alarm or false call, other
2012013	0	1/13/2012	3:14:00AM	424 Carbon monoxide incident
2012014	0	1/15/2012	2:25:00AM	231 Chemical reaction rupture of process vessel
2012015	0	1/16/2012	6:12:00PM	352 Extrication of victim(s) from vehicle
2012022	0	1/23/2012	6:30:00PM	900 Special type of incident, other
2012023	0	1/23/2012	6:30:00PM	900 Special type of incident, other
2012026	0	1/30/2012	8:30:00AM	900 Special type of incident, other
2012029	0	2/4/2012	10:33:28AM	651 Smoke scare, odor of smoke
2012036	0	2/14/2012	7:20:12PM	651 Smoke scare, odor of smoke
2012038	0	2/15/2012	6:00:00PM	900 Special type of incident, other
2012043	0	2/20/2012	2:13:00PM	413 Oil or other combustible liquid spill
2012046	0	2/22/2012	12:36:18PM	730 System malfunction, other
2012048	0	2/24/2012	5:15:50PM	131 Passenger vehicle fire
2012051	0	2/26/2012	11:15:15AM	411 Gasoline or other flammable liquid spill
2012052	0	2/27/2012	6:30:00PM	900 Special type of incident, other
2012055	0	3/2/2012	11:26:24AM	736 CO detector activation due to malfunction
2012061	0	3/7/2012	7:00:13AM	900 Special type of incident, other
2012063	0	3/10/2012	2:20:15PM	671 Hazmat release investigation w/ no hazmat
2012065	0	3/13/2012	4:32:10PM	424 Carbon monoxide incident
2012071	0	3/25/2012	2:29:57PM	651 Smoke scare, odor of smoke
2012074	0	3/30/2012	3:45:03PM	731 Sprinkler activation due to malfunction
2012075	0	3/30/2012	8:56:55PM	151 Outside rubbish, trash or waste fire
2012079	0	4/8/2012	2:17:45PM	112 Fires in structures other than in a building
2012080	0	4/8/2012	4:57:40PM	111 Building fire
2012081	0	4/9/2012	1:29:30PM	143 Grass fire
2012082	0	4/9/2012	8:05:51PM	321 EMS call, excluding vehicle accident with injury
2012084	0	4/10/2012	9:36:25AM	652 Steam, vapor, fog or dust thought to be smoke
2012086	0	4/13/2012	12:44:26PM	131 Passenger vehicle fire
2012086	1	4/13/2012	12:44:26PM	131 Passenger vehicle fire
2012086	2	4/13/2012	12:44:26PM	131 Passenger vehicle fire
2012092	0	4/25/2012	3:10:00PM	561 Unauthorized burning
2012093	0	4/20/2012	6:30:12PM	561 Unauthorized burning
2012106	0	4/30/2012	12:36:30AM	111 Building fire
2012109	0	5/3/2012	9:03:00AM	554 Assist invalid
2012113	0	5/7/2012	1:13:30PM	445 Arcing, shorted electrical equipment
2012114	0	5/10/2012	1:12:00AM	112 Fires in structures other than in a building
2012116	0	5/15/2012	2:12:00PM	551 Assist police or other governmental agency
2012121	0	5/19/2012	8:40:50PM	131 Passenger vehicle fire
2012122	0	5/19/2012	9:09:29PM	631 Authorized controlled burning
2012127	0	5/28/2012	6:00:00PM	900 Special type of incident, other
2012133	0	6/8/2012	10:36:17AM	445 Arcing, shorted electrical equipment
2012137	0	6/13/2012	9:32:45AM	741 Sprinkler activation, no fire - unintentional
2012141	0	6/19/2012	1:25:58PM	162 Outside equipment fire
2012145	0	6/22/2012	6:42:56PM	311 Medical assist, assist EMS crew
2012146	0	6/22/2012	6:53:18PM	131 Passenger vehicle fire
2012147	0	6/23/2012	9:52:00AM	150 Outside rubbish fire, other
2012149	0	6/24/2012	11:10:35PM	154 Dumpster or other outside trash receptacle fire

2012 Incident Reports by District - Graph and Text (rev)

2012150	0	6/24/2012	11:30:25PM	154	Dumpster or other outside trash receptacle fire
2012151	0	6/25/2012	6:30:00PM	900	Special type of incident, other
2012152	0	6/26/2012	1:48:37AM	611	Dispatched & canceled en route
2012153	0	6/27/2012	8:02:23AM	170	Cultivated vegetation, crop fire, other
2012161	0	6/30/2012	11:45:50PM	651	Smoke scare, odor of smoke
2012163	0	7/1/2012	12:58:20PM	111	Building fire
2012169	0	7/2/2012	1:06:39PM	445	Arcing, shorted electrical equipment
2012170	0	7/2/2012	1:40:00PM	911	Citizen complaint
2012181	0	7/20/2012	12:36:18PM	744	Detector activation, no fire - unintentional
2012186	0	7/28/2012	12:02:02AM	745	Alarm system sounded, no fire - unintentional
2012191	0	8/1/2012	12:31:00PM	611	Dispatched & canceled en route
2012198	0	8/11/2012	1:48:32PM	730	System malfunction, other
2012209	0	8/27/2012	7:30:00PM	900	Special type of incident, other
2012216	0	9/10/2012	6:00:00PM	900	Special type of incident, other
2012222	0	9/24/2012	6:00:00PM	900	Special type of incident, other
2012227	0	9/28/2012	7:06:03PM	733	Smoke detector activation due to malfunction
2012229	0	9/29/2012	9:14:16AM	733	Smoke detector activation due to malfunction
2012232	0	9/30/2012	1:30:20PM	113	Cooking fire, confined to container
2012239	0	10/11/2012	2:52:00AM	651	Smoke scare, odor of smoke
2012257	0	10/25/2012	8:07:45AM	600	Good intent call, other
2012269	0	11/13/2012	2:12:35PM	900	Special type of incident, other
2012271	0	11/15/2012	10:30:00AM	553	Public service
2012272	0	11/16/2012	12:49:00PM	445	Arcing, shorted electrical equipment
2012275	0	11/18/2012	8:45:58AM	611	Dispatched & canceled en route
2012282	0	11/26/2012	6:45:00PM	900	Special type of incident, other
2012284	0	11/26/2012	11:13:29PM	142	Brush, or brush and grass mixture fire
2012285	0	11/27/2012	9:58:00PM	132	Road freight or transport vehicle fire
2012290	0	11/29/2012	10:17:00PM	445	Arcing, shorted electrical equipment
2012291	0	11/30/2012	1:33:48PM	611	Dispatched & canceled en route
2012297	0	12/3/2012	7:43:58AM	744	Detector activation, no fire - unintentional
2012304	0	12/16/2012	3:30:00PM	900	Special type of incident, other
<b>Total For This District: 81</b>					

District: Air

Incident #	Exp #	Date	Time	Type
2012017	0	1/17/2012	10:30:00AM	813 Wind storm, tornado/hurricane assessment
2012213	0	9/6/2012	12:27:45PM	412 Gas leak (natural gas or LPG)
2012237	0	10/6/2012	10:41:15AM	553 Public service
<b>Total For This District: 3</b>				

District: ALL

Incident #	Exp #	Date	Time	Type
2012041	0	2/18/2012	9:40:00PM	553 Public service
2012054	0	2/29/2012	8:14:00AM	815 Severe weather or natural disaster standby
2012056	0	3/2/2012	12:00:00PM	815 Severe weather or natural disaster standby
2012057	0	3/2/2012	3:08:58PM	900 Special type of incident, other
2012129	0	6/2/2012	9:00:00AM	900 Special type of incident, other
<b>Total For This District: 5</b>				

2012 Incident Reports by District - Graph and Text (rev)

District: NA

Incident #	Exp #	Date	Time	Type
2012258	0	10/26/2012	9:00:00AM	900 Special type of incident, other
<b>Total For This District: 1</b>				

District: NIJ

Incident #	Exp #	Date	Time	Type
2012005	0	1/6/2012	7:00:00AM	
2012033	0	2/11/2012	9:12:00PM	553 Public service
2012035	0	2/13/2012	8:23:13AM	651 Smoke scare, odor of smoke
2012039	0	2/16/2012	10:00:00AM	900 Special type of incident, other
2012040	0	2/18/2012	10:00:00AM	900 Special type of incident, other
2012042	0	2/20/2012	9:30:00AM	553 Public service
2012050	0	2/25/2012	6:22:10PM	352 Extrication of victim(s) from vehicle
2012058	0	3/2/2012	3:41:28PM	813 Wind storm, tornado/hurricane assessment
2012064	0	3/10/2012	7:04:24PM	352 Extrication of victim(s) from vehicle
2012068	0	3/19/2012	1:21:08PM	142 Brush, or brush and grass mixture fire
2012083	0	4/10/2012	12:50:03AM	352 Extrication of victim(s) from vehicle
2012094	0	4/21/2012	7:17:47PM	356 High angle rescue
2012099	0	4/23/2012	7:58:00PM	900 Special type of incident, other
2012100	0	4/24/2012	8:30:00AM	900 Special type of incident, other
2012101	0	4/24/2012	7:00:00PM	900 Special type of incident, other
2012128	0	5/31/2012	10:45:14AM	611 Dispatched & canceled en route
2012139	0	6/18/2012	8:00:00AM	900 Special type of incident, other
2012144	0	6/21/2012	5:53:00PM	900 Special type of incident, other
2012187	0	7/28/2012	9:00:00AM	900 Special type of incident, other
2012194	0	8/8/2012	1:14:12PM	131 Passenger vehicle fire
2012195	0	8/8/2012	1:43:21PM	142 Brush, or brush and grass mixture fire
2012214	0	9/7/2012	4:41:00PM	352 Extrication of victim(s) from vehicle
2012224	0	9/26/2012	1:45:12PM	611 Dispatched & canceled en route
2012228	0	9/29/2012	6:13:48AM	352 Extrication of victim(s) from vehicle
2012233	0	10/1/2012	4:07:00PM	352 Extrication of victim(s) from vehicle
2012236	0	10/3/2012	5:39:00AM	352 Extrication of victim(s) from vehicle
2012238	0	10/8/2012	9:26:48AM	352 Extrication of victim(s) from vehicle
2012262	0	11/5/2012	7:37:45AM	611 Dispatched & canceled en route
2012276	0	11/28/2012	1:34:00PM	131 Passenger vehicle fire
2012292	0	12/1/2012	6:31:00AM	900 Special type of incident, other
2012307	0	12/18/2012	12:11:30AM	352 Extrication of victim(s) from vehicle
<b>Total For This District: 31</b>				

Grand Total of Incidents: 307

Total count of Districts: 12

Print Date: 2/14/2013

## MFD SHIFT DESCRIPTION

<b>SHIFT NUMBER</b>	<b>TIME OF DAY</b>
<b>1</b>	<b>12:00 A.M. - 07:59 A.M. Monday - Friday</b>
<b>2</b>	<b>12:00 A.M. - 07:59 A.M. Saturday - Sunday</b>
<b>3</b>	<b>08:00 A.M. - 04:00 P.M. Monday - Friday</b>
<b>4</b>	<b>08:00 A.M. - 04:00 P.M. Saturday - Sunday</b>
<b>5</b>	<b>04:01 P.M. - 11:59 P.M. Monday - Friday</b>
<b>6</b>	<b>04:01 P.M. - 11:59 P.M. Saturday - Sunday</b>

**2012 Incidents by Shift - Summary (rev)**

<b>Shift</b>	<b>Total Incidents:</b>
Unknown or Undetermined.	1
1	29
2	17
3	80
4	48
5	107
6	25

**Total Shifts: 7**

**Grand Total:**

**307**

**Print Date:** 2/14/2013

**Incident Reports By Shift**

**2012 Incidents by Shift (rev)**

**Shift:** Unknown or Undetermined.

Incident #	Exp #	Date	Time	Type
2012000	0	7/10/2012	12:00:00AM	
<b>Total For This Shift: 1</b>				

**Shift:** 1

Incident #	Exp #	Date	Time	Type
2012001	0	1/3/2012	12:37:00AM	730 System malfunction, other
2012005	0	1/6/2012	7:00:00AM	
2012008	0	1/9/2012	6:37:00AM	900 Special type of incident, other
2012013	0	1/13/2012	3:14:00AM	424 Carbon monoxide incident
2012037	0	2/15/2012	2:43:00AM	445 Arcing, shorted electrical equipment
2012061	0	3/7/2012	7:00:13AM	900 Special type of incident, other
2012078	0	4/6/2012	7:30:00AM	900 Special type of incident, other
2012083	0	4/10/2012	12:50:03AM	352 Extrication of victim(s) from vehicle
2012095	0	4/23/2012	7:32:14AM	651 Smoke scare, odor of smoke
2012106	0	4/30/2012	12:36:30AM	111 Building fire
2012108	0	5/2/2012	7:36:15AM	353 Removal of victim(s) from stalled elevator
2012114	0	5/10/2012	1:12:00AM	112 Fires in structures other than in a building
2012119	0	5/19/2012	7:45:00AM	900 Special type of incident, other
2012131	0	6/6/2012	5:05:00AM	600 Good intent call, other
2012138	0	6/18/2012	6:20:20AM	671 Hazmat release investigation w/ no hazmat
2012152	0	6/26/2012	1:48:37AM	611 Dispatched & canceled en route
2012167	0	7/2/2012	7:35:21AM	131 Passenger vehicle fire
2012167	1	7/2/2012	7:35:21AM	111 Building fire
2012174	0	7/6/2012	6:09:12AM	733 Smoke detector activation due to malfunction
2012193	0	8/8/2012	2:08:20AM	744 Detector activation, no fire - unintentional
2012204	0	8/17/2012	12:05:30AM	611 Dispatched & canceled en route
2012226	0	9/27/2012	2:03:00AM	741 Sprinkler activation, no fire - unintentional
2012236	0	10/3/2012	5:39:00AM	352 Extrication of victim(s) from vehicle
2012239	0	10/11/2012	2:52:00AM	651 Smoke scare, odor of smoke
2012259	0	10/29/2012	12:11:22AM	132 Road freight or transport vehicle fire
2012262	0	11/5/2012	7:37:45AM	611 Dispatched & canceled en route
2012268	0	11/13/2012	7:47:30AM	445 Arcing, shorted electrical equipment
2012307	0	12/18/2012	12:11:30AM	352 Extrication of victim(s) from vehicle
2012308	0	12/21/2012	1:09:00AM	111 Building fire
<b>Total For This Shift: 29</b>				



## 2012 Incidents by Shift (rev)

Shift: 2

Incident #	Exp #	Date	Time	Type
2012007	0	1/8/2012	4:25:45AM	500 Service Call, other
2012014	0	1/15/2012	2:25:00AM	231 Chemical reaction rupture of process vessel
2012049	0	2/25/2012	7:50:19AM	131 Passenger vehicle fire
2012079	0	4/8/2012	2:17:45PM	112 Fires in structures other than in a building
2012104	0	4/28/2012	5:54:26AM	111 Building fire
2012124	0	5/26/2012	4:00:00AM	132 Road freight or transport vehicle fire
2012136	0	6/10/2012	7:57:23AM	651 Smoke scare, odor of smoke
2012162	0	7/1/2012	3:34:00AM	445 Arcing, shorted electrical equipment
2012186	0	7/28/2012	12:02:02AM	745 Alarm system sounded, no fire - unintentional
2012221	0	9/22/2012	7:00:00AM	900 Special type of incident, other
2012228	0	9/29/2012	6:13:48AM	352 Extrication of victim(s) from vehicle
2012250	0	10/20/2012	7:00:00AM	900 Special type of incident, other
2012261	0	11/3/2012	2:58:00AM	100 Fire, other
2012292	0	12/1/2012	6:31:00AM	900 Special type of incident, other
2012297	0	12/3/2012	7:43:58AM	744 Detector activation, no fire - unintentional
2012310	0	12/24/2012	7:24:50AM	652 Steam, vapor, fog or dust thought to be smoke
2012311	0	12/30/2012	6:25:45AM	700 False alarm or false call, other

Total For This Shift: 17

## 2012 Incidents by Shift (rev)

Shift: 3

Incident #	Exp #	Date	Time	Type
2012009	0	1/12/2012	9:17:01AM	735 Alarm system sounded due to malfunction
2012011	0	1/10/2012	10:09:25AM	700 False alarm or false call, other
2012017	0	1/17/2012	10:30:00AM	813 Wind storm, tornado/hurricane assessment
2012019	0	1/20/2012	8:52:01AM	745 Alarm system sounded, no fire - unintentional
2012021	0	1/23/2012	11:24:09AM	440 Electrical wiring/equipment problem, other
2012026	0	1/30/2012	8:30:00AM	900 Special type of incident, other
2012031	0	2/8/2012	2:56:47PM	611 Dispatched & canceled en route
2012035	0	2/13/2012	8:23:13AM	651 Smoke scare, odor of smoke
2012039	0	2/16/2012	10:00:00AM	900 Special type of incident, other
2012042	0	2/20/2012	9:30:00AM	553 Public service
2012043	0	2/20/2012	2:13:00PM	413 Oil or other combustible liquid spill
2012046	0	2/22/2012	12:36:18PM	730 System malfunction, other
2012047	0	2/24/2012	11:20:25AM	611 Dispatched & canceled en route
2012054	0	2/29/2012	8:14:00AM	815 Severe weather or natural disaster standby
2012055	0	3/2/2012	11:26:24AM	736 CO detector activation due to malfunction
2012056	0	3/2/2012	12:00:00PM	815 Severe weather or natural disaster standby
2012057	0	3/2/2012	3:08:58PM	900 Special type of incident, other
2012058	0	3/2/2012	3:41:28PM	813 Wind storm, tornado/hurricane assessment
2012068	0	3/19/2012	1:21:08PM	142 Brush, or brush and grass mixture fire
2012070	0	3/22/2012	10:31:52AM	413 Oil or other combustible liquid spill
2012081	0	4/9/2012	1:29:30PM	143 Grass fire
2012084	0	4/10/2012	9:36:25AM	652 Steam, vapor, fog or dust thought to be smoke
2012085	0	4/11/2012	1:16:55PM	100 Fire, other
2012085	1	4/11/2012	1:16:55PM	111 Building fire
2012086	0	4/13/2012	12:44:26PM	131 Passenger vehicle fire
2012086	1	4/13/2012	12:44:26PM	131 Passenger vehicle fire
2012086	2	4/13/2012	12:44:26PM	131 Passenger vehicle fire
2012091	0	4/19/2012	11:00:00AM	900 Special type of incident, other
2012092	0	4/25/2012	3:10:00PM	561 Unauthorized burning
2012096	0	4/23/2012	11:51:47AM	671 Hazmat release investigation w/ no hazmat
2012097	0	4/23/2012	1:42:21PM	671 Hazmat release investigation w/ no hazmat
2012100	0	4/24/2012	8:30:00AM	900 Special type of incident, other
2012109	0	5/3/2012	9:03:00AM	554 Assist invalid
2012113	0	5/7/2012	1:13:30PM	445 Arcing, shorted electrical equipment
2012116	0	5/15/2012	2:12:00PM	551 Assist police or other governmental agency
2012128	0	5/31/2012	10:45:14AM	611 Dispatched & canceled en route
2012133	0	6/8/2012	10:36:17AM	445 Arcing, shorted electrical equipment
2012137	0	6/13/2012	9:32:45AM	741 Sprinkler activation, no fire - unintentional
2012139	0	6/18/2012	8:00:00AM	900 Special type of incident, other
2012141	0	6/19/2012	1:25:58PM	162 Outside equipment fire
2012143	0	6/21/2012	9:45:54AM	745 Alarm system sounded, no fire - unintentional
2012153	0	6/27/2012	8:02:23AM	170 Cultivated vegetation, crop fire, other
2012155	0	6/28/2012	9:00:00AM	900 Special type of incident, other
2012168	0	7/2/2012	10:52:51AM	444 Power line down
2012169	0	7/2/2012	1:06:39PM	445 Arcing, shorted electrical equipment
2012170	0	7/2/2012	1:40:00PM	911 Citizen complaint
2012179	0	7/16/2012	12:56:11PM	411 Gasoline or other flammable liquid spill
2012180	0	7/18/2012	6:00:00PM	900 Special type of incident, other
2012181	0	7/20/2012	12:36:18PM	744 Detector activation, no fire - unintentional
2012191	0	8/1/2012	12:31:00PM	611 Dispatched & canceled en route

## 2012 Incidents by Shift (rev)

2012192	0	8/6/2012	2:48:55PM	611	Dispatched & canceled en route
2012194	0	8/8/2012	1:14:12PM	131	Passenger vehicle fire
2012195	0	8/8/2012	1:43:21PM	142	Brush, or brush and grass mixture fire
2012201	0	8/15/2012	12:02:06PM	111	Building fire
2012203	0	8/16/2012	9:48:00AM	744	Detector activation, no fire - unintentional
2012212	0	9/5/2012	10:13:00AM	561	Unauthorized burning
2012213	0	9/6/2012	12:27:45PM	412	Gas leak (natural gas or LPG)
2012219	0	9/17/2012	6:00:00PM	900	Special type of incident, other
2012224	0	9/26/2012	1:45:12PM	611	Dispatched & canceled en route
2012234	0	10/2/2012	11:00:00AM	911	Citizen complaint
2012238	0	10/8/2012	9:26:48AM	352	Extrication of victim(s) from vehicle
2012244	0	10/15/2012	9:04:20AM	621	Wrong location
2012245	0	10/15/2012	9:04:20AM	412	Gas leak (natural gas or LPG)
2012249	0	10/19/2012	10:55:25AM	424	Carbon monoxide incident
2012255	0	10/24/2012	2:09:00PM	740	Unintentional transmission of alarm, other
2012257	0	10/25/2012	8:07:45AM	600	Good intent call, other
2012258	0	10/26/2012	9:00:00AM	900	Special type of incident, other
2012260	0	11/1/2012	8:42:29AM	140	Natural vegetation fire, other
2012263	0	11/7/2012	2:26:00PM	412	Gas leak (natural gas or LPG)
2012269	0	11/13/2012	2:12:35PM	900	Special type of incident, other
2012270	0	11/15/2012	9:00:00AM	900	Special type of incident, other
2012271	0	11/15/2012	10:30:00AM	553	Public service
2012272	0	11/16/2012	12:49:00PM	445	Arcing, shorted electrical equipment
2012275	0	11/18/2012	8:45:58AM	611	Dispatched & canceled en route
2012276	0	11/28/2012	1:34:00PM	131	Passenger vehicle fire
2012279	0	11/22/2012	11:40:34AM	651	Smoke scare, odor of smoke
2012289	0	11/29/2012	1:18:18PM	142	Brush, or brush and grass mixture fire
2012291	0	11/30/2012	1:33:48PM	611	Dispatched & canceled en route
2012301	0	12/10/2012	12:57:59PM	743	Smoke detector activation, no fire - unintentional
2012306	0	12/17/2012	8:30:00AM	900	Special type of incident, other
					<b>Total For This Shift: 80</b>

## 2012 Incidents by Shift (rev)

Shift: 4

Incident #	Exp #	Date	Time	Type
2012028	0	2/4/2012	8:00:00AM	900 Special type of incident, other
2012029	0	2/4/2012	10:33:28AM	651 Smoke scare, odor of smoke
2012034	0	2/12/2012	11:00:00AM	900 Special type of incident, other
2012040	0	2/18/2012	10:00:00AM	900 Special type of incident, other
2012051	0	2/26/2012	11:15:15AM	411 Gasoline or other flammable liquid spill
2012062	0	3/9/2012	2:00:00PM	900 Special type of incident, other
2012063	0	3/10/2012	2:20:15PM	671 Hazmat release investigation w/ no hazmat
2012065	0	3/13/2012	4:32:10PM	424 Carbon monoxide incident
2012067	0	3/18/2012	1:40:43PM	733 Smoke detector activation due to malfunction
2012071	0	3/25/2012	2:29:57PM	651 Smoke scare, odor of smoke
2012074	0	3/30/2012	3:45:03PM	731 Sprinkler activation due to malfunction
2012076	0	3/31/2012	11:58:00AM	900 Special type of incident, other
2012087	0	4/15/2012	9:00:00AM	900 Special type of incident, other
2012111	0	5/5/2012	8:00:00AM	900 Special type of incident, other
2012112	0	5/5/2012	3:10:03PM	100 Fire, other
2012120	0	5/19/2012	3:57:30PM	160 Special outside fire, other
2012125	0	5/26/2012	11:00:00AM	553 Public service
2012126	0	5/28/2012	1:00:00PM	900 Special type of incident, other
2012129	0	6/2/2012	9:00:00AM	900 Special type of incident, other
2012147	0	6/23/2012	9:52:00AM	150 Outside rubbish fire, other
2012163	0	7/1/2012	12:58:20PM	111 Building fire
2012178	0	7/15/2012	10:46:00AM	
2012182	0	7/21/2012	8:30:00AM	900 Special type of incident, other
2012187	0	7/28/2012	9:00:00AM	900 Special type of incident, other
2012188	0	7/28/2012	12:00:00PM	
2012197	0	8/11/2012	12:30:00PM	553 Public service
2012198	0	8/11/2012	1:48:32PM	730 System malfunction, other
2012207	0	8/25/2012	8:00:00AM	900 Special type of incident, other
2012208	0	8/26/2012	10:33:30AM	131 Passenger vehicle fire
2012210	0	9/1/2012	8:30:00AM	900 Special type of incident, other
2012215	0	9/8/2012	12:50:19PM	611 Dispatched & canceled en route
2012218	0	9/16/2012	12:00:00AM	900 Special type of incident, other
2012229	0	9/29/2012	9:14:16AM	733 Smoke detector activation due to malfunction
2012230	0	9/29/2012	11:00:00AM	553 Public service
2012232	0	9/30/2012	1:30:20PM	113 Cooking fire, confined to container
2012237	0	10/6/2012	10:41:15AM	553 Public service
2012266	0	11/10/2012	10:57:12AM	651 Smoke scare, odor of smoke
2012267	0	11/10/2012	11:02:15AM	353 Removal of victim(s) from stalled elevator
2012280	0	11/24/2012	11:30:00AM	900 Special type of incident, other
2012293	0	12/1/2012	10:16:00AM	100 Fire, other
2012295	0	12/2/2012	10:58:47AM	745 Alarm system sounded, no fire - unintentional
2012296	0	12/2/2012	3:30:00PM	900 Special type of incident, other
2012299	0	12/8/2012	8:00:00AM	900 Special type of incident, other
2012300	0	12/9/2012	12:00:00PM	900 Special type of incident, other
2012302	0	12/15/2012	12:00:00PM	900 Special type of incident, other
2012303	0	12/16/2012	12:00:00PM	900 Special type of incident, other
2012304	0	12/16/2012	3:30:00PM	900 Special type of incident, other
2012305	0	12/16/2012	8:00:00AM	900 Special type of incident, other

Total For This Shift: 48

## 2012 Incidents by Shift (rev)

Shift: 5

Incident #	Exp #	Date	Time	Type
2011218	0	12/5/2011	7:00:00PM	900 Special type of incident, other
2011230	0	12/19/2011	7:00:00PM	900 Special type of incident, other
2012002	0	1/3/2012	12:24:30PM	651 Smoke scare, odor of smoke
2012003	0	1/4/2012	6:30:00PM	740 Unintentional transmission of alarm, other
2012004	0	1/5/2012	7:00:00PM	900 Special type of incident, other
2012006	0	1/6/2012	6:33:00PM	651 Smoke scare, odor of smoke
2012010	0	1/9/2012	7:15:00PM	900 Special type of incident, other
2012012	0	1/11/2012	7:31:00PM	700 False alarm or false call, other
2012015	0	1/16/2012	6:12:00PM	352 Extrication of victim(s) from vehicle
2012016	0	1/16/2012	7:00:00PM	900 Special type of incident, other
2012022	0	1/23/2012	6:30:00PM	900 Special type of incident, other
2012023	0	1/23/2012	6:30:00PM	900 Special type of incident, other
2012024	0	1/23/2012	6:00:00PM	
2012025	0	1/26/2012	6:10:16PM	611 Dispatched & canceled en route
2012027	0	2/2/2012	7:30:00PM	900 Special type of incident, other
2012030	0	2/7/2012	6:00:00PM	900 Special type of incident, other
2012036	0	2/14/2012	7:20:12PM	651 Smoke scare, odor of smoke
2012038	0	2/15/2012	6:00:00PM	900 Special type of incident, other
2012044	0	2/23/2012	6:44:00PM	900 Special type of incident, other
2012045	0	2/20/2012	8:49:38PM	651 Smoke scare, odor of smoke
2012048	0	2/24/2012	5:15:50PM	131 Passenger vehicle fire
2012052	0	2/27/2012	6:30:00PM	900 Special type of incident, other
2012053	0	2/28/2012	9:42:15PM	353 Removal of victim(s) from stalled elevator
2012059	0	3/5/2012	7:15:00PM	900 Special type of incident, other
2012060	0	3/6/2012	7:50:25PM	611 Dispatched & canceled en route
2012066	0	3/14/2012	8:59:38PM	740 Unintentional transmission of alarm, other
2012069	0	3/20/2012	4:30:00PM	900 Special type of incident, other
2012072	0	3/26/2012	7:00:00PM	900 Special type of incident, other
2012073	0	3/29/2012	10:19:00PM	161 Outside storage fire
2012075	0	3/30/2012	8:56:55PM	151 Outside rubbish, trash or waste fire
2012077	0	4/5/2012	7:25:00PM	900 Special type of incident, other
2012082	0	4/9/2012	8:05:51PM	321 EMS call, excluding vehicle accident with injury
2012088	0	4/17/2012	11:11:13PM	561 Unauthorized burning
2012089	0	4/18/2012	6:00:00PM	900 Special type of incident, other
2012090	0	4/18/2012	8:20:41PM	600 Good intent call, other
2012093	0	4/20/2012	6:30:12PM	561 Unauthorized burning
2012094	0	4/21/2012	7:17:47PM	356 High angle rescue
2012098	0	4/23/2012	6:00:00PM	900 Special type of incident, other
2012099	0	4/23/2012	7:58:00PM	900 Special type of incident, other
2012101	0	4/24/2012	7:00:00PM	900 Special type of incident, other
2012102	0	4/26/2012	6:00:00PM	900 Special type of incident, other
2012103	0	4/27/2012	5:34:56PM	111 Building fire
2012103	1	4/27/2012	5:34:56PM	111 Building fire
2012103	2	4/27/2012	5:34:56PM	111 Building fire
2012107	0	5/1/2012	6:00:00PM	900 Special type of incident, other
2012110	0	5/4/2012	11:07:00PM	111 Building fire
2012115	0	5/10/2012	5:00:00PM	900 Special type of incident, other
2012117	0	5/16/2012	6:00:00PM	900 Special type of incident, other
2012118	0	5/17/2012	9:00:00PM	561 Unauthorized burning
2012123	0	5/22/2012	7:08:09PM	311 Medical assist, assist EMS crew

## 2012 Incidents by Shift (rev)

2012127	0	5/28/2012	6:00:00PM	900	Special type of incident, other
2012132	0	6/6/2012	6:00:00PM	900	Special type of incident, other
2012140	0	6/18/2012	7:28:00PM	900	Special type of incident, other
2012142	0	6/19/2012	4:57:58PM	651	Smoke scare, odor of smoke
2012144	0	6/21/2012	5:53:00PM	900	Special type of incident, other
2012145	0	6/22/2012	6:42:56PM	311	Medical assist, assist EMS crew
2012146	0	6/22/2012	6:53:18PM	131	Passenger vehicle fire
2012151	0	6/25/2012	6:30:00PM	900	Special type of incident, other
2012154	0	6/27/2012	6:00:00PM	900	Special type of incident, other
2012156	0	6/29/2012	5:25:01PM	445	Arcing, shorted electrical equipment
2012157	0	6/29/2012	5:42:00PM	444	Power line down
2012158	0	6/29/2012	5:43:00PM	445	Arcing, shorted electrical equipment
2012159	0	6/29/2012	6:45:35PM	740	Unintentional transmission of alarm, other
2012160	0	6/29/2012	7:21:00PM	500	Service Call, other
2012171	0	7/2/2012	7:30:00PM	900	Special type of incident, other
2012172	0	7/4/2012	5:30:00PM	553	Public service
2012173	0	7/5/2012	5:03:20PM	445	Arcing, shorted electrical equipment
2012175	0	7/6/2012	6:00:00PM	553	Public service
2012176	0	7/11/2012	7:09:01PM	111	Building fire
2012177	0	7/11/2012	9:30:00PM	561	Unauthorized burning
2012183	0	7/24/2012	6:30:00AM	900	Special type of incident, other
2012184	0	7/24/2012	6:00:00PM	900	Special type of incident, other
2012185	0	7/27/2012	7:52:30PM	445	Arcing, shorted electrical equipment
2012189	0	7/30/2012	5:45:00PM	900	Special type of incident, other
2012190	0	7/31/2012	8:01:00PM	151	Outside rubbish, trash or waste fire
2012196	0	8/10/2012	5:00:00PM	553	Public service
2012202	0	8/15/2012	6:00:00PM	900	Special type of incident, other
2012205	0	8/20/2012	7:00:00PM	900	Special type of incident, other
2012206	0	8/22/2012	6:00:00PM	900	Special type of incident, other
2012209	0	8/27/2012	7:30:00PM	900	Special type of incident, other
2012214	0	9/7/2012	4:41:00PM	352	Extrication of victim(s) from vehicle
2012216	0	9/10/2012	6:00:00PM	900	Special type of incident, other
2012217	0	9/10/2012	7:04:00PM	900	Special type of incident, other
2012220	0	9/19/2012	6:00:00PM	900	Special type of incident, other
2012222	0	9/24/2012	6:00:00PM	900	Special type of incident, other
2012223	0	9/24/2012	6:00:00PM	900	Special type of incident, other
2012225	0	9/26/2012	6:11:00PM	412	Gas leak (natural gas or LPG)
2012227	0	9/28/2012	7:06:03PM	733	Smoke detector activation due to malfunction
2012233	0	10/1/2012	4:07:00PM	352	Extrication of victim(s) from vehicle
2012235	0	10/2/2012	5:00:39PM	744	Detector activation, no fire - unintentional
2012247	0	10/16/2012	5:30:00PM	900	Special type of incident, other
2012248	0	10/17/2012	10:54:00PM	600	Good intent call, other
2012251	0	10/22/2012	6:20:00PM	445	Arcing, shorted electrical equipment
2012254	0	10/23/2012	8:07:58PM	561	Unauthorized burning
2012264	0	11/9/2012	4:56:32PM	671	Hazmat release investigation w/ no hazmat
2012265	0	11/9/2012	5:09:45PM	651	Smoke scare, odor of smoke
2012273	0	11/12/2012	6:00:00PM	900	Special type of incident, other
2012274	0	11/12/2012	7:00:00PM	900	Special type of incident, other
2012277	0	11/19/2012	7:30:00PM	900	Special type of incident, other
2012278	0	11/19/2012	7:45:00PM	900	Special type of incident, other
2012282	0	11/26/2012	6:45:00PM	900	Special type of incident, other
2012283	0	11/26/2012	7:00:00PM	900	Special type of incident, other
2012284	0	11/26/2012	11:13:29PM	142	Brush, or brush and grass mixture fire



**2012 Incidents by Shift (rev)**

2012285	0	11/27/2012	9:58:00PM	132	Road freight or transport vehicle fire
2012287	0	11/28/2012	5:37:50PM	113	Cooking fire, confined to container
2012290	0	11/29/2012	10:17:00PM	445	Arcing, shorted electrical equipment
2012298	0	12/6/2012	7:00:00PM	900	Special type of incident, other
					<b>Total For This Shift: 107</b>

**Shift: 6**

Incident #	Exp #	Date	Time	Type	
2012020	0	1/21/2012	9:38:08PM	424	Carbon monoxide incident
2012032	0	2/11/2012	4:01:00PM	111	Building fire
2012033	0	2/11/2012	9:12:00PM	553	Public service
2012041	0	2/18/2012	9:40:00PM	553	Public service
2012050	0	2/25/2012	6:22:10PM	352	Extrication of victim(s) from vehicle
2012064	0	3/10/2012	7:04:24PM	352	Extrication of victim(s) from vehicle
2012080	0	4/8/2012	4:57:40PM	111	Building fire
2012121	0	5/19/2012	8:40:50PM	131	Passenger vehicle fire
2012122	0	5/19/2012	9:09:29PM	631	Authorized controlled burning
2012130	0	6/3/2012	6:24:31PM	700	False alarm or false call, other
2012135	0	6/9/2012	5:18:00PM	900	Special type of incident, other
2012149	0	6/24/2012	11:10:35PM	154	Dumpster or other outside trash receptacle fire
2012150	0	6/24/2012	11:30:25PM	154	Dumpster or other outside trash receptacle fire
2012161	0	6/30/2012	11:45:50PM	651	Smoke scare, odor of smoke
2012164	0	7/1/2012	6:49:23PM	445	Arcing, shorted electrical equipment
2012165	0	7/1/2012	6:49:23PM	445	Arcing, shorted electrical equipment
2012166	0	7/1/2012	7:01:00PM	445	Arcing, shorted electrical equipment
2012199	0	8/12/2012	4:27:27PM	143	Grass fire
2012200	0	8/12/2012	5:00:00PM	553	Public service
2012211	0	9/1/2012	10:07:50PM	154	Dumpster or other outside trash receptacle fire
2012231	0	9/29/2012	8:53:26PM	744	Detector activation, no fire - unintentional
2012242	0	10/13/2012	4:47:48PM	730	System malfunction, other
2012281	0	11/25/2012	5:44:37PM	611	Dispatched & canceled en route
2012294	0	12/1/2012	9:50:13PM	111	Building fire
2012309	0	12/22/2012	10:01:30PM	410	Flammable gas or liquid condition, other
					<b>Total For This Shift: 25</b>

**Grand Total of Incidents: 307**

**Print Date:** 2/14/2013

**Total count of Shifts: 7**