



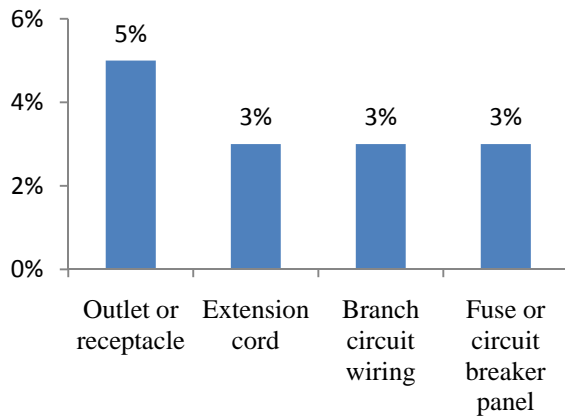
Home Fires Involving Electrical Failure or Malfunction

U.S. fire departments responded to an estimated average of 52,500 reported U.S. home¹ structure fires involving electrical failure or malfunction in 2006. These fires resulted in 340 civilian deaths, 1,400 civilian injuries and \$1,447 million in direct property damage.

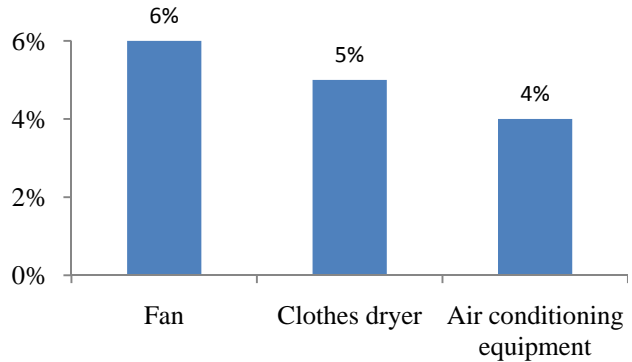
46% of home electrical failure fires involved electrical distribution or lighting equipment in 2003-2006.

47% of electrical failure home fires involved other known types of equipment in 2003-2006.

Leading Known Types of Electrical Distribution or Lighting Equipment Involved in Home Electrical Failure Fires, 2003-2006



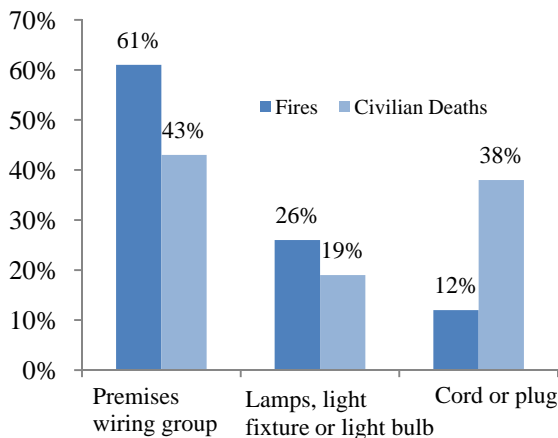
Leading Other Known Types of Equipment Involved in Home Electrical Failure Fires, 2003-2006



Home Fires Involving Electrical Distribution or Lighting Equipment

U.S. fire departments responded to an estimated average of 25,100 reported U.S. non-confined home structure fires involving electrical distribution or lighting equipment in 2006. These fires resulted in 370 civilian fire deaths, 840 civilian fire injuries, and \$776 million in direct property damage.

Home Fires Involving Electrical Distribution or Lighting Equipment, by Major Equipment Group 2003-2006



In 2003-2006:

Some type of electrical failure or malfunction was cited as factor contributing to ignition for 74% of electrical distribution or lighting equipment home structure fires.

Two-fifths (40%) of civilian deaths in home structure fires involving electrical distribution or lighting equipment began in the living room, family room or den.

Wire or cable insulation is what ignited first in 31% of electrical distribution or lighting equipment home structure fires.

¹Homes are dwellings, duplexes, manufactured homes, apartments, townhouses, and rowhouses.